

PLAYBILL®

 WALNUT STREET THEATRE
PHILADELPHIA, PENNSYLVANIA



The Broadway Musical

1 BILLION STREAMS.
6 QUEENS.
15 COUNTRIES.
80 EXHILARATING MINUTES.



WRITTEN BY 2022 TONY AWARD® WINNERS
TOBY MARLOW & LUCY MOSS
ON BROADWAY

WASHINGTON, DC NOVEMBER 12 - DECEMBER 1
BOSTON, MA DECEMBER 3 - 29
ON TOUR ACROSS NORTH AMERICA

SIXONBROADWAY.COM



PLAYBILL®

President & CEO: Philip S. Birsh
Chief Financial Officer: Shamindra Jagnanan
Chief Operating Officer & VP: Alex Birsh
Director of Manufacturing: Robert Cusanelli
Executive Assistant to CEO and COO: Dalconerys Reyes

Editor-in-Chief: Diep Tran
Production Managers: Alex Near
Jenna Perrino
Prepress Manager: Seán Kenny
Prepress Specialist: Benjamin Hyacinthe
Associate Editor: Stephen Vratos
Art Director: Kesler Thibert
Creative Services Manager: Dean Greer
Managing News Editor: Logan Culwell-Block
Senior News Editor: Andrew Gans
New York Broadway Editors: Scott Hale
Khadijah Rentas
Managing Program Editor: Matt Bonanno
Program Editors: Amy Asch
David Porrello
Silvia Figueroa

Publisher, West Coast Sales & Partnerships: Glenn Shaevitz
Vice President of Sales: Joshua Stone
Associate Publisher: Jolie Schaffzin
Head of Sales for Theatrical and Regional Markets: Nicholas Foster
Director, Restaurant Advertising: Clara Barragán
National Sales Director: Grace Simpson
Advertising Sales Associate: Franchesca Reese
Advertising Sales Associate: Katie Clooney-Gainey
Sales Operations Manager: Joe Weinberg
Sales Marketing Associate: Sabrina Rasizzi
Ticket Manager: Yaira Mitchell
Chief Technology Officer: Jon Goldman
Director of Digital Operations: Andrew Ku
Creative Director: Bryan Campione
Director of Events & Creative Strategy: Leonard Rodino
Digital Media Manager: Jennifer Marinelli
Social Media Manager: Jeffrey Vizcaino

Chairman: Philip S. Birsh
Editor in Chief Emeritus: Joan Allemen
Secretary/Treasurer: Shamindra Jagnanan

PHILADELPHIA ADVERTISING SALES

Michael Gagliardi
215-840-7628 | mgagliardi@playbill.com

Advertising Sales
729 Seventh Avenue, 4th Floor
New York, New York 10019
(212) 557-5757

PLAYBILL® is published by PLAYBILL Incorporated, 729 Seventh Avenue, 4th Floor, New York, NY 10019. Copyright 2024 by PLAYBILL Incorporated. All Rights Reserved. PLAYBILL® is a Registered Trademark of PLAYBILL Incorporated.

Contents

NOVEMBER 2024

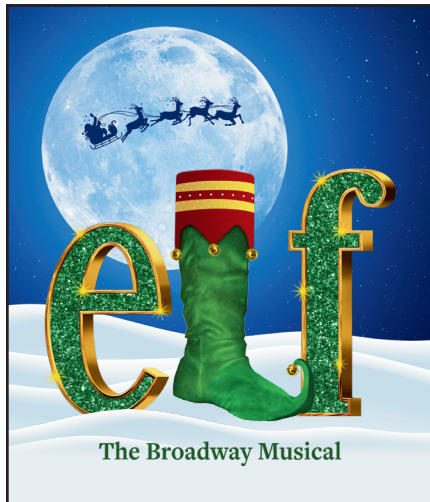
WELCOME

2

THE PROGRAM

4

Including Cast, Who's Who and Credits





FOUNDED 1808

AMERICA'S OLDEST THEATRE – PHILADELPHIA'S MOST POPULAR THEATRE COMPANY

WALNUT STREET THEATRE

825 WALNUT STREET • PHILADELPHIA, PA 19107

Dear Theatregoer,

Welcome back to the Walnut for our 216th spectacular holiday season! I am thrilled and honored to be back for my 42nd season. We were hard at work all summer renovating the theatre – the largest renovation of its kind since 1999. As you explore the theatre spaces, we hope that you enjoy the upgrades we have crafted with you in mind.

My holidays are not complete without the company of my family and friends, and whether you are a long-time subscriber or this is your first visit to the Walnut, you are a part of our family here. I warmly welcome you to our 2024-25 holiday production, the delightful *ELF THE BROADWAY MUSICAL*. Our fantastic artists have channeled their holiday spirit and a tremendous amount of care into bringing the story of Buddy the Elf to vibrant life on the stage. We hope this performance fills you with holiday joy and inspires you to return for our remaining shows this season.

With the New Year comes the arrival of *DRIVING MISS DAISY*, the Pulitzer Prize-winning story of an elderly Jewish widow and an African-American chauffeur who forge a deep friendship that transcends boundaries.

When spring is just around the corner, we will welcome Noël Coward's *HAY FEVER*, where misjudged liaisons, secret seductions, and scandalous revelations run riot at the most outrageous of all house parties.

Rounding out our season will be the sensational Broadway musical *DREAMGIRLS*, inspired by Diana Ross and the Supremes, where stars rise and fall but dreams live forever! This dazzling production will bring you along for the rapid rise of a 1960s girl group into pop superstardom and will leave you dreaming big.

In addition to our unforgettable Mainstage Season, we are overjoyed that The Theatre School at Walnut Street Theatre is in session for our Spring semester, welcoming students of all ages. I encourage anyone with a passion for life to peruse our class offerings. I am also pleased for the return of Walnut Street Theatre for Kids this season, bringing back our favorite Charles Dickens' *A CHRISTMAS CAROL* for the holidays, and the soaring musical adventure Disney's *ALADDIN JR.* in the spring.

For now, sit back and enjoy the music and the twinkly tale of Buddy the Elf and friends in *ELF THE BROADWAY MUSICAL*. We are beyond thrilled to welcome you to the theatre and look forward to seeing you again soon!

Sincerely,

Bernard Havard,
President and Producing Artistic Director



Photo: Mark Garvin

What Matters.



Rediscover what matters.
In Gettysburg, Pennsylvania.

DestinationGettysburg.com

DESTINATION
Gettysburg!
ADAMS COUNTY, PA



FOUNDED 1808

AMERICA'S OLDEST THEATRE – PHILADELPHIA'S MOST POPULAR THEATRE COMPANY

WALNUT STREET THEATRE

825 WALNUT STREET • PHILADELPHIA, PA 19107

BERNARD HAVARD

President and Producing Artistic Director

November 19 – December 29, 2024

ELF

The Broadway Musical

Book by
THOMAS MEEHAN
and
BOB MARTIN

Music by
MATTHEW SKLAR

Lyrics by
CHAD BEGUELIN

Based upon the New Line Cinema film written by David Berenbaum

Originally produced by
Warner Bros. Theatre Ventures
in association with Unique Features

Set Design
ROBERT ANDREW KOVACH

Costume Design
KATE BERGH

Lighting Design
MATT DEMASCOLO

Sound Design
ED CHAPMAN

Wig & Makeup Design
CARISSA THORLAKSON

Director of
Production
SIOBHÁN RUANE

Stage Managers
MICHELE BEGLEY
JENN GALLO
KATIE WILHELM

Associate
Artistic Director
BRIAN KURTAS

Music and Vocal Direction by
CHRIS BURCHERI

Choreographed by
ROBBIE ROBY

Directed by
GLENN CASALE

SPONSORED BY



MARK D. SYLVESTER

Managing Director

General
Manager
JESSICA DOHENY

Director of
Development
JEFF COON

Director of
Education
T.J. SOKSO

Director of Marketing
and Public Relations
STEPHEN RAPP

Rediscover the Magical Glow of Christmas

VISIT TRU-TONE.COM

**LED Christmas bulbs with the bright,
warm glow of classic incandescent.**

No other LED Christmas bulb casts the same nostalgic glow as Tru-Tone, and nothing compares to seeing them in person! Add to the wonder of the season, continue traditions and create lasting memories with the help of Tru-Tone.



AVAILABLE IN THREE SIZES IN A RANGE OF COLORS & STYLES

CAST

(in order of appearance)

Santa.....	Bill Van Horn*
Mrs. Claus.....	Sierra Wilson*
Buddy.....	Nic Rouleau*
Charlie.....	Eddie Olmo II*
Shawanda.....	Madeline Kendall
Walter Hobbs.....	Fran Prisco*
Sam.....	Jesse Jones*
Deb.....	Bonnie Kelly*
Emily Hobbs.....	Krissy Fraelich*
Michael Hobbs.....	Joey Caroto†, Finn Vajapey‡
Security Guards.....	Giovanni DiGabriele*, Eddie Olmo II*
Macy's Manager.....	Tiara J. Greene*
Jovie.....	Kathryn Brunner*
Fake Santa.....	Giovanni DiGabriele*
Kid on Santa's Lap.....	Nora Shute†, Faye Stockmal‡
Policemen.....	Brett-Marco Glauser*, Zummy Mohammed*
Mr. Greenway.....	Paul L. Nolan*
Matthews.....	Sara Brophy*
Chadwick.....	Dominick Sannelli
Charlotte Dennon.....	Alexandra Frohlinger*

ENSEMBLE

SARA BROPHY*, GIOVANNI DIGABRIELE*, ALEXANDRA FROHLINGER*,
BRETT-MARCO GLAUSER*, JESSE JONES*, MADELINE KENDALL,
KIMBERLY MAXSON*, ZUMMY MOHAMMED*, EDDIE OLMO II*,
DOMINICK SANNELLI, AUDREY BIEHL SIMMONS*, SIERRA WILSON*

CHILDREN'S ENSEMBLE

† *Weekday Team (Performs all shows Tues. – Fri., except Fri. evenings 12/6, 12/13, and 12/20)*

SHANE GOODMAN, JULIA MERCEDES HEUMAN, CHASE RYAN MAILHIOT,
RILEY MCLAUGHLIN, RAPHAEL SOMMER

‡ *Weekend Team (Performs all shows Saturday and Sunday,
plus Fri. evenings 12/6, 12/13, and 12/20 and Mon. eve. 12/23)*

CLARA BISHOP, MIA ERNENWEIN, BEN HOSBACH,
TYLER JAI KNOWLES, SAAJAN LAKHANI

UNDERSTUDIES

LAUREN CHAMPLIN-MOADELI (Emily Hobbs), HARLEY DIAMOND (Mr. Greenway), SOPHIA DILEO (Jovie), ANTHONY FLAMMINIO (Ensemble), BOBBY KRAMER (Walter Hobbs), RACHEL MASELEK (Deb), LINDSEY MCCUE (2nd Cover Ensemble), BRIANA MYERS (2nd Cover Ensemble), SKYLAR RAYE NOYES (Ensemble), EDDIE OLMO II (Buddy), DOMENICA PASSIO (Ensemble), ISAAC RIPLEY (2nd Cover Ensemble), OLIVIA SCHANBACHER (Ensemble), TOM SHAW JR. (Ensemble), JAY STEINBERG (Santa), TYLER JAI KNOWLES (2nd Cover Michael Hobbs), JAYSON LINDSEY WILLIAMS (Ensemble), JOEY WILLIAMS (2nd Cover Ensemble), MEAGON WILLIAMS (Macy's Manager)

DANCE CAPTAIN: AUDREY BIEHL SIMMONS

* The Actors and Stage Managers employed in this production are members of Actors' Equity Association, the theatre union of Professional Actors and Stage Managers in the United States.

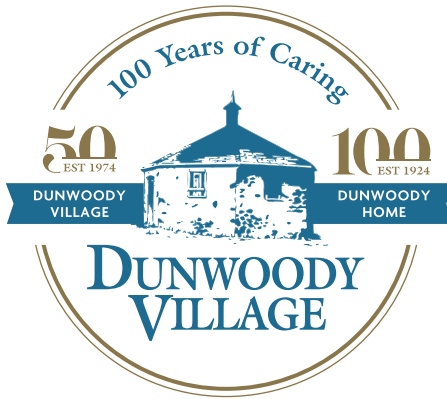
The videotaping or other video or audio recording of this production is strictly prohibited.

Artwork by BWJ Enterprises LLC

Elf The Musical

is presented through special arrangement with Music Theatre International (MTI).
All authorized performance materials are also supplied by MTI. www.mtishows.com

100 Years and Counting



(610) 359-4400 | www.dunwoody.org | 3500 West Chester Pike • Newtown Square, PA 19073
Independent Living • Rehabilitation • Personal Care • Skilled Nursing • Memory Support • Home Care



Pet Friendly

Proud Sponsor of Walnut Street Theatre



A Continuing Care Retirement Community | ★★★★★ Five-Star Rated Healthcare

Your Brand
Hand Delivered
to Your
Target Audience!

**Contact us today
to reserve space in
PLAYBILL.**

Your Sales Representative:

Michael Gagliardi
mgagliardi@playbill.com
215.840.7628

PLAYBILL®



I KNOW THEM!

At CBIZ, our professionals make sure your business stays on the Nice List all year long. We're here to spread cheer and **deliver results that make you smile.**

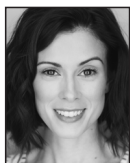
Accounting | Tax | Advisory |
Benefits & Insurance | Technology

John Fidler
215.827.7476 | John.Fidler@cbiz.com

CAST



**CLARA
BISHOP**



**SARA
BROPHY**



**KATHRYN
BRUNNER**



**JOEY
CAROTO**



**GIOVANNI
DIGABRIELE**



**MIA
ERNENWEIN**



**KRISSY
FRAELICH**



**ALEXANDRA
FROHLINGER**



**BRETT-MARCO
GLAUSER**



**SHANE
GOODMAN**



**TIARA J.
GREENE**



**JULIA
MERCEDES
HEUMAN**



**BEN
HOSBACH**



**JESSE
JONES**



**BONNIE
KELLY**



**MADELINE
KENDALL**



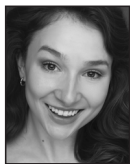
**TYLER JAI
KNOWLES**



**SAAJAN
LAKHANI**



**CHASE RYAN
MAILHOT**



**KIMBERLY
MAXSON**



**RILEY
MCLAUGHLIN**



**ZUMMY
MOHAMMED**



**PAUL L.
NOLAN**



**EDDIE
OLMO II**



**FRAN
PRISCO**



**NIC
ROULEAU**



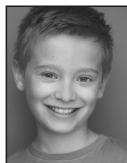
**DOMINICK
SANNELLI**



**NORA
SHUTE**



**AUDREY BIEHL
SIMMONS**



**RAPHAEL
SOMMER**



**FAYE
STOCKMAL**



**FINN
VAJAPEY**



**BILL
VAN HORN**



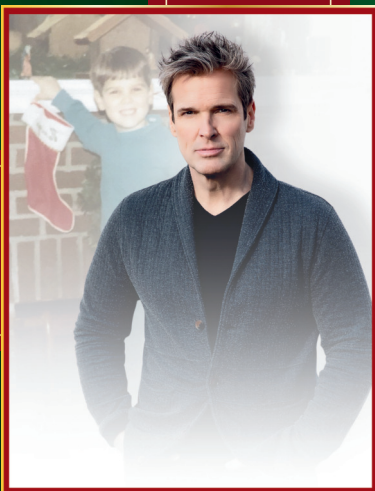
**SIERRA
WILSON**

THE CONCERT EVENT
OF THE HOLIDAY SEASON!

HUGH PANARO

HOME FOR THE HOLIDAYS

ONE NIGHT ONLY!
TUESDAY, DEC 17 AT 7:30PM



WALNUT STREET
THEATRE FOR KIDS

CHARLES DICKENS' **A
CHRISTMAS
CAROL**

DECEMBER 6 – 21

TO BUY TICKETS VISIT WalnutStreetTheatre.org

ticketmaster OR CALL 215-574-3550



FOUNDED 1808

AMERICA'S OLDEST THEATRE – PHILADELPHIA'S MOST POPULAR THEATRE COMPANY

WALNUT STREET THEATRE

825 WALNUT STREET • PHILADELPHIA, PA 19107

MUSICAL NUMBERS

ACT I

“Overture”	Orchestra
“Christmastown/ Happy All The Time”	Santa, Buddy, Elves
“World’s Greatest Dad”	Buddy
“In The Way”	Deb, Walter, Emily, Michael, Ensemble
“Sparklejollytwinklejingle”	Buddy, Jovie, Manager, Ensemble
“I’ll Believe In You”	Michael, Emily
“In The Way” (Reprise)	Emily, Walter
“Just Like Him”	Buddy, Walter, Deb, Ensemble
“A Christmas Song”	Buddy, Jovie, Company
“I’ll Believe in You” (Reprise)	Buddy, Ensemble

THERE WILL BE ONE 20-MINUTE INTERMISSION.

ACT II

“Entr’acte”	Orchestra
“Nobody Cares About Santa”	Buddy, Manager, Santas
“Never Fall In Love (With An Elf)”	Jovie
“There Is a Santa Claus”	Michael, Emily
“The Story of Buddy”	Buddy, Michael, Walter, Deb, Mr. Greenway, Emily
“Nobody Cares...” (Santa’s Reprise)	Santa
“A Christmas Song” (Reprise)	Jovie, Buddy, Emily, Michael, Walter, Ensemble
“Finale”	Full Company

ORCHESTRA

Keyboard 3 / Conductor – Chris Burcheri

Keyboard 1 / Associate Conductor – Jonathan Rose; Keyboard 2 – Daniel Espie

Reed 1 – Frank Mazzeo; Reed 2 – Bob Quaille; Reed 3 – John Welte

Violin – Rebecca Ansel; Drums – Kevin Blanke; Bass – Fred Weiss;

Trombone – Bob Gale; Trumpet – Jim Ward

WHO’S WHO

CLARA BISHOP (*Ensemble*) is honored to make her WST debut! Favorites: Gretl in *Sound of Music* (DCP), Molly in *Annie* (Forge). Love to family, friends, BAA & Innovative Artists.

SARA BROPHY (*Ensemble/Matthews*) is overjoyed to be spending another sparklejollytwinklejingly holiday season at the Walnut! Some favorite credits include *Clue* (Miss Scarlet); *Dancing Lessons* (Senga); *Legally Blonde* (Brooke Wyndham); *Syncopation* (Anna) and *Amazing Grace* (OBC). Pure Barre teacher, stretch therapist, and baker. IG @sarabeesknees Movement is medicine, laughter is life!

KATHRYN BRUNNER (*Jovie*) is so excited to be returning home to the Walnut for the holidays! Favorite WST credits include Ella in Rodgers + Hammerstein’s *Cinderella* and Elle Woods in *Legally Blonde*. Other credits include Sacramento Music Circus, Arden Theatre, Pioneer Theatre,

Riverside Theatre, Penn Shakespeare, and Arrow Rock Lyceum. Sincerest thanks to Glenn, Bernard, and the entire creative team. Love to Blake, Mom, and Matt. As always, for Dad.

JOEY CAROTO (*Michael Hobbs*) Joey is thrilled to be back at Walnut Street Theatre after playing Kid Elvis in *Elvis: A Musical Revolution* last season. He is a 7th grader from West Chester and favorite credits include *Mary Poppins* (Michael Banks), *Finding Nemo* (Bruce), and *Les Misérables* (Gavroche). He would like to thank his family, friends, and his teachers for the amazing support! A very special thanks to everyone at WST! @joeycaroto

GIOVANNI DIGABRIELE (*Ensemble*) was last seen in the WST’s production of Disney’s *Beauty and the Beast* as “Lefou” and is thrilled to be back! Broadway National Tour: *Cats* (Skimbleshanks); *A Bronx Tale* (Handsome Nick, Calogero u/s);

WHO'S WHO

A *Chorus Line* (Al); Rodgers + Hammerstein's *Cinderella* (Jean Michel u/s). Regional: Goodspeed Opera House, MSMT, and Fulton Theatre. Endless gratitude to his family, friends, Glenn, Robbie, Bernard, Brian Kurtas, and his mentors. For Santino, Luca, and Adriana.

MIA ERNENWEIN (*Ensemble*) is so excited to be in *Elf!* Favorites: *A Christmas Story* (Surflight Theatre); Disney's *Frozen* (Young Anna) (ERHS); Disney's *The Little Mermaid* (Ariel). Thanks to Mom, Dad, Marley, & Jeter.

KRISSY FRAELICH (*Emily Hobbs*) is elated to reprise this role she did over ten years ago at WST. Last seen here in Rodgers + Hammerstein's *Cinderella*. Credits include: *Next to Normal* (Diana); *Sunday in the Park with George* (Dot/Marie) (Arden Theatre Company); *Gypsy* (Mama Rose); *Mamma Mia!* (Donna) (Media Theatre); *Evita* (Eva Peron) (WST) B'way: *The Civil War*. Many thanks to Bernard, Brian, Mark & Glenn. Love to NZTB always.

ALEXANDRA FROHLINGER (*Ensemble/Charlotte Dennon*) WST: Disney's *Beauty and the Beast*; *Escape to Margaritaville*; Rodgers + Hammerstein's *Cinderella*; Disney's *The Little Mermaid*. Broadway: *Soul Doctor*. Off-Broadway: *Empire* (Janet Arthur/Goodie); *America: Golden Land* (Sadie). Tours: *Wonderful World*; *Hello, Dolly!*; Rodgers + Hammerstein's *Cinderella*; *West Side Story* (Anybods). Regional: Sacramento; Arena Stage. BFA Boston Conservatory. Thanks and love: Mom, Dad, Joey, Becky, Zaida, Dave, Alison and always WST @alexfrohlinger

BRETT-MARCO GLAUSER (*Ensemble*) is pleased as punch to return to the Walnut for such a joyous endeavor. He previously appeared here as Pepper in *Mamma Mia!*. Credits include *Anastasia* (First Nat'l tour), Arena Stage, the MUNY, Goodspeed Opera House and many more. Thanks to Glenn, Robbie, Brian and Penny for this opportunity! @bmcglauer

SHANE GOODMAN (*Ensemble*) is so excited to be on the WST stage with the cast of *Elf The Broadway Musical!* Love to his family and friends who have come to support him!

TIARA J. GREENE (*Macy's Manager*) Regional: *Elvis: A Musical Revolution* (Walnut Street Theatre); *Once on This Island*; *Into the Woods* (Arden Theatre Company); *Bandstand* (Playhouse on Park); *The Wild Party* (Eagle Theatre); *Bonnie and Clyde* (11th Hour Theatre Company). Thanks to God! Thanks to family and friends for their continued support! www.tiaragreene.com.

JULIA MERCEDES HEUMAN (*Ensemble*) is excited to make her Walnut debut! Favorite role:

Marta in *The Sound of Music*. She is grateful to her family, friends, and teachers for their endless support, as well as to WST for this amazing opportunity!

BEN HOSBACH (*Ensemble*) is so excited to make his Walnut Street Theatre debut in *Elf The Broadway Musical!* Some of his favorite roles include Michael in *Mary Poppins* and Bruce in *Matilda*. Ben loves sugar almost as much as Buddy and hopes this show brings you lots of Christmas cheer!

JESSE JONES (*Ensemble*) Jesse always enjoys spending the holidays at Walnut. Broadway & National Tour: *Beetlejuice the Musical*. Regional Favorites: *The Wiz*, *Dreamgirls*, *The Cher Show*, *In The Heights*, *La Cage Aux Folles*, *Swing!* His work also includes background dancing for music videos, operas and TV. Thanking God every day. @jessejdance

BONNIE KELLY (*Deb*) WST Credits: Disney's *Beauty and the Beast* (Babette); *Beehive: The '60's Musical* (Patty), *Holiday Inn* (Lila Dixon) and ensembles of Disney's *The Little Mermaid*; *Rocky, the Musical*; Rodgers + Hammerstein's *Cinderella*; *Shrek the Musical*; *Young Frankenstein*; *The Wizard of Oz*; and *A Christmas Story*. BFA Montclair State University. For her parents, the holiday magic makers who she misses dearly. Much love to her WST family. @bondooz for more.

MADELINE KENDALL (*Ensemble/Shawanda*) Walnut Debut! Select credits: National Tour: *Anastasia the Musical* (u/s Anya/Ens). Fulton Theatre: *Grease* (Patty Simcox); *Joseph and the Amazing Technicolor Dreamcoat*. Ordway PAC: Disney's *Beauty and the Beast*. Argyle Theatre: *A Chorus Line* (Connie). Peterborough Players: *She Loves Me*; *Our Town*. Wagner College, BA Theatre and Speech. Insta: @maddie_kenda11

TYLER JAI KNOWLES (*Ensemble/Michael Hobbs u/s*) is thrilled to make his WST debut! Special thanks to my family, my dog Oliver, and the best music teacher ever, Mrs. Brannon!

SAAJAN LAKHANI (*Ensemble*) is thrilled to make his debut at the Walnut Street Theatre! He would like to thank his family for supporting his passion for the stage!

CHASE RYAN MAILHIOT (*Ensemble*) thrilled to make his Walnut debut! Favorite role: Mr. Wormwood in *Matilda* (UES). Love and thanks to Courtney MacBride, sister Reese, Mom & Dad, family, friends, and WST!

KIMBERLY MAXSON (*Ensemble*) So thankful to be back! Favorite credits: *Jersey Boys*; *Escape to Margaritaville*; *Shrek The Musical*; *Holiday Inn*; *Mamma Mia!*; 9 to 5 (WST); *Gypsy*; *Billy Elliot the Musical*; *Beehive: The '60's Musical*; *Hello,*

WHO'S WHO

Dolly! (Media Theatre); *Cabaret: The Producers* (BCCPA); *Mary Poppins* (OCTC); *Chicago* (Maples Rep). Love to my husband Ronnie and my family! @kimberly_maxson

RILEY MCLAUGHLIN (*Ensemble*) is thrilled to be making her Walnut Street Theatre debut. She loves performing and is thankful for everyone that made this amazing experience possible!

ZUMMY MOHAMMED (*Ensemble*) is honored to return to WST. WST: *Disney's Beauty and the Beast*; Rodgers + Hammerstein's *Cinderella*; *Legally Blonde*. Off-Broadway: *Relapse: A New Musical*. Regional: Rodgers + Hammerstein's *Cinderella* (Broadway at Music Circus); *Legally Blonde* (John W. Engeman Theater); *A Chorus Line* (The Phoenix Theatre); *Cabaret* (The Studio Theatre TDS). Upcoming: *Cabaret* (Orlando Shakespeare Theatre Company). Zummy thanks the WST, cast, crew and his loved ones. For more, follow @thezummymohammed

PAUL L. NOLAN (*Mr. Greenway*) has been performing on stage, on camera and in front of microphones since the Nixon administration. He's thrilled to have performed in a number of Walnut Street Theatre productions – most recently in various roles in *Elvis: The Musical Revolution*. For more PLN information: paulnolanactor.com

EDDIE OLMO II (*Ensemble/Buddy us*) Recently seen at WST as Bob Gaudio in *Jersey Boys* and as Barry Mann in *Beautiful – The Carole King Musical!* Broadway: *The Book of Mormon*. Touring: *The Book of Mormon*; *Elf The Broadway Musical*. Regional: Goodspeed, WST, North Carolina Theatre, Stages St. Louis, The REV, and others. Love to Mom, Dad, and Cierra. www.eddieolmo.com / @eddie_olmo

FRAN PRISCO (*Walter Hobbs*) #42! Happy Holidays!! Most recent WST Roles: *Jersey Boys* (Gyp DeCarlo); *Beautiful – The Carole King Musical* (Donny Kirshner); *Disney's Beauty and the Beast* (Cogsworth). Past WST roles include: Rodgers + Hammerstein's *South Pacific* (Billis); *The Music Man* (Marcellus); *Dirty Rotten Scoundrels* (Andre). Many thanks to the entire Walnut St. Family!! Love to Siobhan!!!

NIC ROULEAU (*Buddy*) Walnut Street debut! Nic holds the record as the longest-running Elder Price in *The Book of Mormon*, having performed the role over 2600 times on Broadway, in the West End in London and in Chicago. National Tours: *Hello, Dolly!* (Cornelius) and *Legally Blonde* (Emmett). Television credits include Tyler Hawkins in *Uncoupled* starring Neil Patrick Harris (Showtime), Daddy's Boy in *Unbreakable Kimmy Schmidt* (Netflix) and the 2012 Tony Awards (CBS). Upcoming: PBS concert series Broadway's

Leading Men with the American Pops Orchestra. Bachelor's of Music from NYU Steinhardt. @nicrouleau

DOMINICK SANNELLI (*Ensemble*) Walnut debut! Touring: Andrew Lloyd Webber's *The Wizard of Oz* (Ensemble). Regional: *Hello, Dolly!* (Rudolph) (ActII Playhouse); *The Prom* (Sheldon) (The Media Theater); *Crazy for You* (Mingo) (PA Shakes); *Sweet Charity* (BCCPA); *Big The Musical*; *Jesus Christ Superstar*; *The Producers*; *Pirates of Penzance* at Bristol Riverside Theatre; *Sign of the Seahorse* (Finny) (Kennedy Center). TV: *Hairspray Live* Phila (NBC/Universal) Film: *Silver Linings Playbook*. Thanks to Brian and HKA! Love and gratitude to the best family in the world. @djs19

NORA SHUTE (*Kid on Santa's Lap/Ensemble*) Thrilled to make her debut at the Walnut! Dreams do come true! Recent credits include *Madagascar Jr.* (Kowalski) and *The Enchanted Bookshop* (Toto) with OST.

AUDREY BIEHL SIMMONS (*Ensemble*) is grateful you are here supporting live theatre. 10th show at WST! Favorites: *Jersey Boys*; Rodgers + Hammerstein's *Cinderella*; *Disney's Beauty and the Beast*; *Young Frankenstein*; *Shrek The Musical*; *Legally Blonde*. Other credits: Tuacahn, Riverside Theatre, and eleven shows with Broadway Sacramento. Immense gratitude to Glenn and Robbie. @audreybsimmons

RAPHAEL SOMMER (*Ensemble*) is thrilled and honored to perform in *Elf The Broadway Musical*. His third show at WST! Prior credits include Chip, Sonny, Michael Banks, and multiple films and TV shows. He thanks Mom, Dad, and his 5 siblings for continued support. @raphaelsommeractor

FAYE STOCKMAL (*Kid on Santa's Lap/ Ensemble*) is thrilled to return to the Walnut Street Theatre stage! Favorite credits include: *Annie* (Annie); *Cat on a Hot Tin Roof* (Trixie); and *Matilda The Musical* (Bruce). Much love to my family, friends and the entire WST team!

FINN VAJPEY (*Michael Hobbs*) is a freshman at Moorestown HS and is thrilled to be making his Walnut Street Theatre debut! Favorite roles: *Finding Nemo* (Nemo); *Willy Wonka* (Mike Teevee); and *Newsies: The Musical* (Les) with Moorestown Theater Company and *The Addams Family* (Pugsley) at WAMS. Love and thanks to family, friends, teachers, and WST! @finnvajpey

BILL VAN HORN (*Santa*) Recently at the Walnut: *Disney's Beauty and the Beast*, *Disney's The Little Mermaid*; *A Woman of No Importance*; *Gifts of the Magi*; *Annie*; *A Funny Thing Happened on the Way to the Forum*; *Oz*; *A Christmas Story*; *Mary Poppins*; *Driving Miss Daisy*; *Elf The Broadway*

WHO'S WHO

Musical; The Prince; Fiddler on the Roof. Directed: *Civil War Voices; The Curious Incident of the Dog in the Night-Time; The Glass Menagerie;* and created and starred in *O Captain, My Captain: Whitman's Lincoln*. Bill is a permanent member of the acting company at Theatre at Monmouth in Maine. Proud member of Actors' Equity.

SIERRA WILSON (*Ensemble/Mrs. Claus*) is thrilled to be returning to the WST. Regional credits: *Dreamgirls* (Goodspeed Musicals); *Man of La Mancha*; *Other World* (Delaware Theatre Co.); *Beautiful – The Carole King Musical*; *Rocky*; the Musical (WST); *The Color Purple* (PSF); *Sweet Charity* (BCCPA); BA in Musical Theatre (Temple University). She thanks her family and friends for supporting her dreams. @sierrajwilson

THOMAS MEEHAN (*Book*) received the Tony Award for co-writing the book for *The Producers* in 2001 and in 2003 for co-writing the book for *Hairspray*. He received his first Tony Award in 1977 for writing the book of *Annie*, which was his first Broadway show, and has written the books for the musicals *Rocky*, *Elf the Musical*, *Cry-Baby*, *Young Frankenstein*, *Chaplin*, *Bombay Dreams*, *I Remember Mama*, *Ain't Broadway Grand* and *Annie Warbucks*. In addition, he was a long-time contributor of humor to *The New Yorker*, an Emmy-Award winning writer of television comedy, and a collaborator on a number of screenplays, including Mel Brooks' *Spaceballs* and *To Be Or Not To Be*. Mr. Meehan was also a member of the Council of the Dramatists Guild. He and his wife, Carolyn, divided their time between a home in Nantucket and an apartment in Greenwich Village, near which, on Hudson Street, she owned and presided over the long-running and near-legendary children's store Peanut Butter & Jane.

BOB MARTIN (*Book*) has been working as an actor and writer in Canadian theatre, film and television for over 3 decades. He has had a long association with the Toronto Second City, where he co-wrote and performed in four Second City revues, directed three, and had a stint as Artistic Director. He is a co-creator of *The Drowsy Chaperone*, and has performed in many of its incarnations including Ahmanson Theatre (Los Angeles), Marquis Theatre (Broadway), Novello (London). Bob has won a number of awards for his work including an LA Drama Critics Circle Award, an L.A. Stage Alliance Ovation Award, a Drama Desk Award, a Theatre World Award, and a Tony Award. He is also co-creator of the critically acclaimed dramatic series *Slings & Arrows*. Recent TV projects include *Michael: Tuesdays and Thursdays I & II* (CBC), *Sensitive Skin I & II* (HBO), and *Elf: Buddy's Musical Christmas* (NBC). Recent theatre projects include *Elf* (Broadway), *Minsky's* (Ahmanson LA), and in dev., *Gotta Dance*, *The Sting*, and *Millions*. Bob reunited with *Elf* collabora-

tors Matthew Sklar and Chad Beguelin to create the new musical *The Prom*, which ran on Broadway at the Longacre Theatre and was nominated for seven Tony Awards, including Best Musical.

MATTHEW SKLAR (*Music*) is a Tony®, Emmy®, and Drama Desk Award-nominated composer. His works include the Broadway musicals *Elf* and *The Wedding Singer* (Tony Award Nomination for Best Original Score, Drama Desk Award Nomination for Outstanding Music). He also wrote the music for *The Rhythm Club* (Signature Theatre), *Judas & Me*, and *Wicked City* (American Stage Company). Matthew reunited with *Elf* collaborators Chad Beguelin and Bob Martin to create the new musical *The Prom*, which ran on Broadway at the Longacre Theatre and was nominated for seven Tony Awards, including Best Musical. Matthew received a 2015 Primetime Emmy® Award Nomination for Outstanding Music Direction for the critically-acclaimed NBC stop-motion animated TV special *Elf: Buddy's Musical Christmas*, starring Jim Parsons. He adapted and arranged the music of Marvin Hamlisch for the Emmy Award-winning documentary film *Marvin Hamlisch: What He Did For Love*, seen on PBS/American Masters. Matthew has contributed original songs/music to *Sesame Street*, *Wonder Pets!*, and the NBC Broadcast of *The Macy's Thanksgiving Day Parade*. Awards include the ASCAP/Richard Rodgers New Horizons Award, the Gilman/Gonzalez-Falla Theatre Award, and the Jonathan Larson Performing Arts Foundation Award. Matthew is a proud member of the Dramatists Guild, ASCAP, and the American Federation of Musicians, Local 802. His music is published by Warner/Chappell Music. Matthew was educated at The Juilliard School of Music (Pre-College Division), the Boston University Tanglewood Institute, and New York University.

CHAD BEGUELIN (*Lyrics*) is a four-time Tony Nominee whose works include Disney's *Aladdin* (Tony Award Nomination for Best Book and Best Original Score, Drama Desk Award Nomination for Outstanding Lyrics and Best Book) and *The Wedding Singer* (Tony Award Nomination for Best Book and Best Original Score, Drama Desk Award Nomination for Outstanding Lyrics). He also wrote the lyrics for the Broadway musical *Elf*, which broke several box office records at the Al Hirschfeld Theatre. His play *HARBOR* premiered off-Broadway at Primary Stages. Chad also wrote the book and lyrics for *Judas & Me* (NYMF Award for Excellence in Lyric Writing), *The Rhythm Club* (Signature Theater) and *Wicked City* (American Stage Company). Chad reunited with *Elf* collaborators Matthew Sklar and Bob Martin to create the new musical *The Prom*, which ran on Broadway at the Longacre Theatre and was nominated for

WHO'S WHO

seven Tony Awards, including Best Musical. He is the recipient of the Edward Kleban Award for Outstanding Lyric Writing, the Jonathan Larson Performing Arts Foundation Award, the Gilman & Gonzalez-Falla Musical Theater Award and the ASCAP Foundation Richard Rodgers New Horizons Award. Chad is a graduate of New York University's Tisch School of the Arts Graduate Dramatic Writing Program.

GLENN CASALE (*Director*) is thrilled to be back! Broadway: *Peter Pan* starring Cathy Rigby (Tony Award nomination Best Revival), filmed by A&E (two Emmy Awards). Off-Broadway: *The Property Known as Garland, Dragapella* at Studio 54 (Drama Desk and Lucille Lortel Award Nominations for Best Production). International: For Stage Entertainment and Disney Theatrical: Disney's *The Little Mermaid, Beauty and the Beast*, and *The Wiz*. Tours and Regional Theater: Disney's *The Little Mermaid, The Hunchback of Notre Dame, Doctor Dolittle, Camelot, Ballroom, Wrestlers, From the Top, Company, Bingo!, Anything Goes* (Ovation Award-winning Best Musical) for Reprise, and *The Prisoner of Second Avenue*. Television directing credits include: ABC TV's "The Faculty" starring Meredith Baxter and "The Wayans' Brothers." Glenn is on the staff of the California Musical Theater in Sacramento.

ROBBIE ROBY (*Choreographer*) previously choreographed *Shrek: The Musical* at the Walnut and is excited to return! Recent credits include the national tour of *Hairspray* (starring Nina West of "RuPaul's Drag Race") as well as the regional premieres of *Disney's Frozen* (Tuacahn Center for the Arts), *Charlie and the Chocolate Factory*, and *The SpongeBob Musical* (Broadway at Music Circus). Select credits: *Joseph... Dreamcoat* (starring David Archuleta), *Sister Act* (starring Tamyra Gray), *Disney's Beauty and the Beast* (Ordway Theatre), *Seussical* (PCLO), *Disney's The Little Mermaid* (The 5th Avenue Theatre), and *The Addams Family* (Broadway at Music Circus). As a performer, Robbie was the dance captain for Broadway/Touring productions of *Billy Elliot: The Musical, Hairspray, Disney's The Little Mermaid* and *Monty Python's Spamalot*.

CHRIS BURCHERI (*Music and Vocal Direction*) Previous Walnut credits include *Jersey Boys, Beautiful - The Carol King Musical; Disney's Beauty and the Beast; Elvis - A Musical Revolution; Rodgers + Hammerstein's Cinderella; and Rocky, the Musical*. Also, recently at Broadway at Music Circus (Rodgers + Hammerstein's *Cinderella*), Bucks County Playhouse (*Kinky Boots*), Villanova University, Rutgers-Camden, and Arcadia University. University of Pennsylvania graduate. Love to Maura, Mom, and Dad.

ROBERT ANDREW KOVACH (*Set Design*) has had the honor to design for The Walnut Street Theatre since 2006. Special thanks to Bernard and Mark for the years of opportunities. My family and I appreciate it. Robert has designed for Off-Broadway, tours, and theatre throughout the US & Internationally. Robert and his team have designed and produced corporate events, general sessions, and keynotes for Fortune 500 companies including INTEL, Blockworks, Milwaukee Tool, and Buick GMC. <http://www.koventertainment.com/>

KATE BERGH (*Costume Design*) started in Chicago before moving to Los Angeles and designing for theater, opera, dance, film, and commercials. She has worked at the Pasadena Playhouse, The Geffen Playhouse, The Laguna Playhouse, Rogue Machine, 59E59 Theater, Disney Animation, Australian Theatre Company, Delaware Theatre Company. She is thrilled to be working here at the Walnut Street Theatre on *Elf*!

MATT DEMASCOLO (*Lighting Design*) is thrilled to be working on this production of *Elf*. His past shows at the WST include *Beehive: The 60's Musical; Always, Patsy Cline; Rodgers + Hammerstein's Cinderella; Escape to Margaritaville; Disney's Beauty and the Beast; Groucho: A Life in Revue and Jersey Boys*. Matt is formerly the Lighting Systems Manager at Production Express, Inc. in York, PA but is now the Technical Supervisor here at the WST. His other theatrical work includes lighting productions at the Fulton Theatre and Maine State Music Theatre such as *Elf The Broadway Musical; Always, Patsy Cline; Million Dollar Quartet; Little Shop of Horrors* and *Grease*.

ED CHAPMAN (*Sound Design*) Happy to return for the 11th year at Walnut St. Broadway: *Leopoldstadt* (Associate Designer); *Ink* (2019 Tony-nomination Best Sound Design, Associate Designer) and *Travesties* (2018 Tony-nomination Best Sound Design, Associate Designer). Touring Productions: *Disney's The Little Mermaid; A Christmas Story; How the Grinch Stole Christmas; Guys and Dolls; The Producers*. Other award-nominated work: *Holiday Inn* (2018 SALT Award nomination), *Mamma Mia!* (2016 Berkshire Theatre Award nomination).

CARRISA THORLAKSON (*Wig and Makeup Designer*) is a freelance wig and makeup designer. You may have seen her recent work here at WST in *Disney's Beauty and the Beast; Jersey Boys, Beautiful - The Carole King Musical; Elvis - A Musical Revolution; Rodgers + Hammerstein's Cinderella; Rocky, the Musical* and more. You may have noticed her recent work locally in *Kinky Boots* at Delaware Theatre Company. She has also designed for New York City Center, The Old Globe,

WHO'S WHO

A.R.T., Paper Mill Playhouse, McCarter Theatre Center, Hartford Stage, Lookingglass Theatre Company, Lantern Theatre Company, Two River Theatre, Bay Street Theater, Olney Theatre Center, and The Princeton Festival. She has served as a wig and makeup artist across the country. Carissa also creates custom medical wigs, cosplay wigs, and teaches classes in wigs and makeup. Find her on Instagram as @wigician or see her work or rent wigs at CThorwigs.com.

MICHELE BEGLEY (*Stage Manager*) is so excited to be returning to WST for her second professional season! She started out here as a Stage Management Apprentice for the main stage under Lori Aghazarian and Angela Cucco Jenkins in the 2017-2018 season. Most recently, she was one of the ASMs for *Jersey Boys*. Last season, she had the pleasure to work on all five mainstage productions. Other regional credits include: Bristol Riverside Theatre, Theater at Monmouth, Penobscot Theatre Company, First Stage, and The Barnstormers Theatre. Special thanks to the cast, crew, apprentices, production, creative staff, Katie, Jenn, and Jon who make this show possible. Proud member of AEA. Enjoy the show!

JENN GALLO (*Assistant Stage Manager*) is a Delco native, and incredibly excited to be returning to the area for *Elf The Broadway Musical*! She was most recently an SM on the National Tour of *Jagged Little Pill*, and other favorite credits include *Once* (Berkshire Theatre Group) and *Islander* (Playhouse 46). We Are!

KATIE WILHELM (*Assistant Stage Manager*) Walnut Street debut! Previous credits include *Spells of The Sea* (Kennedy Center); *On Your Feet* and *Kinky Boots* (Riverside Theatre); *Grease* (Nederlander Worldwide); *The Wiz*; *The Play That Goes Wrong*, and *Jersey Boys* (Fulton Theatre); *An Inspector Calls* (Florida Repertory Theatre). Thanks to Tim Markus for being the best.

SIOBHÁN RUANE (*Director of Production*) This is Siobhán's 12th season at WST. With over 20 years in the business, Siobhán has worked internationally as a Production Manager and Stage Manager. Previously, Siobhán held the faculty position of Stage Management Advisor at Florida State University's School of Theatre. Additional credits include *Cirque du Soleil*, Norwegian Cruise Line, *Cirque Productions*, and various regional theatres. Siobhán holds an undergraduate degree from Rutgers University, an MFA from the University of Delaware, and is (proudly!) originally from the Jersey Shore.

BRIAN KURTAS, CSA (*Associate Artistic Director*) has been associated with WST since 2007. He began his career here as a performer and in the

professional apprenticeship program and has since dedicated himself to bringing artists together. He now serves our artists and audiences through casting, directing, programming, and literary management, as his function is to identify the highest quality of artists for our historic theatre. His vision behind unforgettable live experiences and storytelling has become a creative solution from the stage to the screen. He spent 4 seasons as Executive Producer of Gretna Theatre, worked on television and feature films, and helped create events and entertainment for brands such as T-Mobile and Walmart while at Live Nation. Originally from Lancaster, Brian is a proud Temple alum, a published playwright, and a member of the Casting Society of America.

MARK D. SYLVESTER (*Managing Director*) Mark is proud to be celebrating over three decades at America's Oldest Theatre. His extensive career has spanned Summer Stock to Broadway as an actor, stage manager, box office treasurer, theatre manager, marketing and public relations director and general manager. After several years working with commercial theatre, he has devoted his career to non-profit theatre companies since 1987. To date, Mark has been associated with more than 500 stage productions. An avid collector of musical theatre recordings, his collection contains over 3,500 cast albums from around the world. He has served on several boards including the National Alliance for Musical Theatre where he now holds the honorary position of Board Emeritus and the Advisory Committee of Samuel French, the international play publisher and licensing company. With Bernard Havard he co-authored the book *Walnut Street Theatre*.

BERNARD HAVARD (*President and Executive Producing/Artistic Director*) *Vox Populi* (The Voice of the People) was written on WST Playbills in the 1800s. Whenever WST has strayed from a populist program, the theatre has gone bankrupt. When I came here 42 years ago, we had no programs and no audience. Today we enjoy one of the largest subscription bases of any theatre in the world. So, my thanks to our loyal audience and a warm welcome to newcomers who enjoy and believe in what we do. I admire the artists who dedicated their lives to the theatre and WST, particularly. Our theatre is a non-profit 501-C3 institution, and we rely on contributed income to extend our reach into the community. Last season we reached more than 62,743 students in our city schools. We have 19 esteemed trustees who give their time, wisdom, and contributions to help guide this historical treasure. I came to WST in 1982, and I am as excited now about our future as I was in the beginning. My heartfelt thanks to all who enter this theatre. For my biography, go to About Us on our website at WalnutStreetTheatre.org

WALNUT STREET THEATRE
825 WALNUT STREET, 215-574-3550

BOARD OF TRUSTEES

President	Bernard Havard
Chair	Francis J. Mirabello, Esq.
Immediate Past Chair	Scott Rankin
Chairman Emeritus	Louis W. Fryman, Esq.
Chairman Emeritus	Matthew Garfield
Chairman Emeritus	John D. Graham
Vice Chair/Secretary	Patrick Mullen
Treasurer	Robert L.B. Harman
Jeffrey Ferro	Gene Schriver
John Fidler	Daniel J. Schuller
Jack R. Garfinkle, Esq.	James D. Scully, Jr.
Melita J. Jordan	Ellen Tobie
Richard A. Mitchell, Esq.	Joseph Villani
Jennifer Merves Robbins	David Wyher
Tanya Ruley-Mayo	

ALUMNI TRUSTEES

Ashok N. Bakhru, Bruce Belzak, George M. Chamberlain Jr.,
Thomas J. Coultas, Louis J. D'Ambrosio, Joseph E. Ellis Sr.,
Barry Genkin, Terry Graboyes, Ramona Gwynn,
Denise Daher Hodgson – Chairwoman Emerita,
Jeremy D. Johnson, Kenneth E. Kirby, Theresa E. Loscalzo (Esq.),
Craig R. MacQueen, Kyle Anne Midkiff, Ann Marie Richter,
Renee H. Rollin, Keith D. Schneck,
Martin W. Spector, James M. Tholey

HONORARY MEMBERS

Ms. Carole Haas Gravagno, Hon. Mark Squilla, Ms. Lily Tomlin

WALNUT STREET THEATRE STAFF

ARTISTIC

President and Producing Artistic Director..... Bernard Havard
Associate Artistic Director

ADMINISTRATION

Managing Director| | |
| --- | --- |
| General Manager..... | Jessica Doheny |
| Controller | Michael S. Armento |
| Assistant to the Controller..... | Sonja Stormes |
| Management Assistant..... | Maya Holliday |
| Audience Services Manager..... | Angelia Evans |
| Associate Audience Services Managers | Brendon Kennedy, Kiana Yubitani |
| Refreshment Service Manager | Tony Houck |
| Facilities Manager | Bruce Myers |
| Assistant to the Facilities Manager..... | Tony Sample |
| Facility Services..... | Christopher Bradley, Airlief Foster, Demetria Foster, Lamont Godley, Camielle Johnson, Ashura Merriweather, Marquis Miller, Charles Phillip |

DEVELOPMENT

Director of Development..... Jeff Coon
Development Associate..... BillyD Hart
Development Associate..... Lizzie Gumula
Development Apprentice..... Zachary Sherry

EDUCATION

Director of Education| | |
| --- | --- |
| Associate Director of Education | Amanda Pasquini |
| Education Programs Manager | Maya Chester-Ziv |
| Education Apprentice..... | Devon Duffy |
| Acting Apprentices | Lindsey McCue, Briana Myers, Isaac Ripley, Joey Williams |
| Teaching Artists..... | Dave Allison, Julianna Babb, Jordan Bailkin, Hallie Berger, Val Berger, Andy Boettcher, Andrea Cardoni, Hannah Catanoso, Jake Collins, Elliot Davis, Walter Dodd, Sharon Geller, Adam Hoyak, Annette Kaplafka, Brian Kurtas, Donovan Lockett, Adam Mandala, Lindsay Marcus, Kennedy McAlister, Taylor J. Mitchell, Domenica Passio, David Pica, Nicole Renna, Immanuel Rimmer, Steven Rishard, Alicia Roper, Faith Sacher, Leah Senseney, Connor Shields, Devon Sinclair, Arielle Sosland, Grant Uhle, Alice Yorke |

MARKETING

Director of Marketing and Public Relations..... Stephen Rapp
Communications Manager..... Kelsey Sherlock
Marketing Associate| Group Sales and Ticketing Services Associate | Jennifer Epstein |
Marketing Apprentice	Rachel Scorpio
Box Office Treasurer	Lindsay Goldschmidt
Assistant Box Office Treasurer	Rick Dougherty
Ticketing Services Manager.....	Tom Brzozowski
Associate Ticketing Services Manager.....	Jeff Berry
Ticketing Services Associate	Luke Solacoff
Ticketing Services Apprentice	Ja'Nell Hall-Ragin
Ticketing Services Agents.....	Emily Fonash
Richard Ginsberg, Logan Keeler, Maryann Kuzan, Christopher LeVere, Giovanna Marchese, Leslie Monaco, Irmak Sagir, Will Street, Courtney Taylor, Abby Vanderbrul	
Outbound Sales and Telefunding	Ann Marie Borget, Zachary Sherry, Lauren Townsend

PRODUCTION

Director of Production..... Siobhán Ruane
Assistant Production Manager| Production Technical Supervisor..... | Megan Lampron |
Production Administrator	Matt DeMascolo
Production Apprentice	Jess Fowler
Stage Manager	Sophia Devereux
Assistant Stage Managers	Michele Begley
Dance Captain	Jenn Gallo, Katie Wilhelm
Assistant Lighting Designer	Audrey Biehl Simmons
Stage Management Apprentice	Jon Donsky
Technical Director	Jon Balagtas
Assistant Technical Director	Brian Froomjian
Technical Production Associate	Eli Marsh
TD/Shop Management Apprentice.....	Tyler Bogie
Head Carpenter	Caroline Herring
Carpenters	Jon Wheeler
Carpentry Apprentices	Kerin Frank, Carter Sinquefield, Stas Kosinski, Mick Coughlan
Scenic Charge	Maya Lebron, Carlos Sedano
Scenic Artists	Leslie Curd
Scenic Apprentice.....	Thomasin Parnes, Lauren Selnes
Properties Manager.....	Mo Lehmberg and Aria Smith
Prop Rental Coordinator.....	Shannon O'Brien
Head Properties Artisan	Lindsey Silver
Properties Artisan.....	Natalie Reichman
Properties Apprentices	Matthew Barth Kelly Devlin, Blake Johnson, Clare Wislar

Costume Shop Manager..... Natalia de la Torre
Assistant Costume Shop Manager| Draper and Costume Associate | Anya Loverdi |
Costume Apprentices	Chloe Swidler
Drapers.....	Emily Marcus, Adriana Soto Ruiz
Stitchers	Sarah Mitchell, Morgan Porter, Kayla Speedy
Lead Dresser	Janice DeCoster, Melissa Drago, Gretchen Ellis, Kelly Myers, Amanda Todaro
Dressers.....	Alison Levy
Wig and Make-Up Coordinator	McKenzie McClure, Amari Callaway
Wig and Wardrobe Apprentice	Claire Waid
Costume Stock Coordinator	Madeline Segar Elizabeth McNamara

Stage Crew

Head Carpenter| | |
| --- | --- |
| Head Electrician | Mick Coughlan |
| Head Flyman | Amber Faulhaber |
| Head Sound | David Cain |
| Head Props | Adam Orseck |
| Seasonal Assistant Sound | Valerie Bannan |
| Seasonal Assistant Lighting | Ryan Erlichman |
| Stage Crew Apprentice..... | Kathryn Morgan |
| Child Coordinator..... | Elliot Cetinski |
| Assistant Child Coordinator | Tom Geiger Kaity Levesque |



Actors' Equity Association ("Equity"), founded in 1913, is the U.S. labor union that represents more than 51,000 professional Actors and Stage Managers. Equity fosters the art of live theatre as an essential component of society and advances the careers of its members by negotiating wages, improving working conditions and providing a wide range of benefits, including health and pension plans. Actors' Equity is a member of the AFL-CIO and is affiliated with FIA, an international organization of performing arts unions. #EquityWorks



UNITED SCENIC ARTISTS REPRESENTS DESIGNERS FOR THE AMERICAN THEATRE



MUSICIANS REPRESENTED BY THE AMERICAN FEDERATION OF MUSICIANS



BACKSTAGE EMPLOYEES AND SCENE SHOP EMPLOYEES ARE REPRESENTED BY THE INTERNATIONAL ALLIANCE OF THEATRICAL STAGE EMPLOYEES. (I.A.T.S.E.)



The Director and Choreographer are members of the **STAGE DIRECTORS AND CHOREOGRAPHERS SOCIETY**, a national theatrical labor union.



The mission of the Walnut Street Theatre Company is to sustain the tradition of professional theatre and contribute to its future viability and vitality. It does so through the production and presentation of professional theatre; the encouragement, training, and development of artists; the development of diverse audiences; and the preservation and chronicling of its theatre building, a National Historic Landmark.



Walnut Street Theatre is a member of the Greater Philadelphia Cultural Alliance, Citizens for the Arts in Pennsylvania, and the League of Historic American Theatres. Walnut Street Theatre receives state arts funding support through a grant from the Pennsylvania Council on the Arts, a state agency funded by the Commonwealth of Pennsylvania.



Accessibility Equipment, Training and Marketing provided by Independence Starts Here, the statewide cultural accessibility program of VSA PA/Amaryllis Theatre Co., jointly led in different regions in PA by cultural partners in that region. In Greater Philadelphia, Independence Starts Here is jointly led by Art-Reach, Inc.



ART · REACH

Walnut Street Theatre receives additional season operating support from Actors Equity Foundation and Independence Foundation.



Arts Alive Year 16: Walnut Street Theatre Turns the "DREAM" of Diverse Arts Participation into Reality.

COMING ATTRACTIONS AT THIS THEATRE!

MAINSTAGE

Our 2024–25 Season includes

- *Driving Miss Daisy*
- Noël Coward's *Hay Fever*
- *Dreamgirls*

Buy a subscription or individual tickets at **215-574-3550**,

WalnutStreetTheatre.org
or Ticketmaster.com, 800-982-2787

WST FOR KIDS

- **Charles Dickens' *A Christmas Carol***
(December 6-21, 2024)
- **Disney's *Aladdin Jr.***
(April 26–May 11, 2025)

WALNUT STREET THEATRE SCHOOL

Contact us about our Spring Classes.
Call 215-574-3550, ext. 510
or register online at **walnutstreettheatre.org**

THANK YOU TO OUR GENEROUS SUPPORTERS!

Walnut Street Theatre wishes to express gratitude to the following individuals, corporations, foundations, and government agencies for their generous contributions in support of America's Oldest Theatre.

FORREST SOCIETY (\$25,000+)

Friends of Education
Hamilton Family Charitable Trust
Bob & Louise Harman
Bernard Havard &
Judy Capuzzi Havard
The Hearst Foundations, Inc.
The Hellendall Foundation

Syde Hurdus Foundation
KPK Development Co, LP
Mr. & Mrs. Francis J. Mirabello
The Neag Foundation
PA Department of Community &
Economic Development
PECO

PNC Arts Alive
Scott & Sharon Rankin
James & Marlene Scully
Louis & Bessie Stein Foundation
Fund #2
Joe & Kim Villani

BOOTH SOCIETY (\$10,000+)

Paul M. & Mary Lee Anderson
C & N Bank
CBIZ, Inc.
Delta Community Supports
Disney Worldwide Services
Frances Emmons-Anastasi &
Christopher Emmons
Essential Utilities, Inc.
Jeff & Janie Ferro
Giunero Floro

Dennis & Jennie Franklin
Fulton Bank
Matt Garfield
Herman Goldner Company
Horace W. Goldsmith Foundation
Huntington Bank
Independence Foundation
Independence Blue Cross
Johnson Kendall & Johnson Inc.
Megawholesale, Inc.

Richard A. Mitchell & Marna Carlton
Pennsylvania Council on the Arts
Pennsylvania Lumbermens Mutual
Insurance Company
Philadelphia Cultural Fund
The Rimmel Foundation
Mark D. Sylvester
USLI
David Wyher

BARRYMORE SOCIETY (\$5,000+)

Abington Neurological
Associates
Anonymous
Arthur Murray's Rising Star
World Foundation
Drs. James Byers &
Stephanie Chuipek
Sam Driban &
Marilyn Shadis
Elliot's Vending Company,
Inc.

Ferreira Law
Rhoda & Louis Fryman
Anne & Philip Glatfelter III
Family Foundation
Patrick & Shelly Guise
The Haley Foundation
Jerry & Kate Hathaway
Jane M. James
Johnson & Johnson Family
of Companies

William M King Charitable
Foundation
Philip & Margaret Masters
Dr. Sandra Mather
Mr. & Mrs. Edward J. Mitchell
Maureen E. Molloy
Pat & Jacki Mullen
The Payne Family Foundation
Dr. Mitchell Rodman
Royer Cooper Cohen
Braunfeld LLC

Keith Schneck &
Linda Chisholm
Roger & Kathi Smith
The Ethel Sergeant Clark
Smith Memorial Fund
William R. Snell, Esq.
Spark Therapeutics
TD Charitable Foundation
Universal Health Services
Mr. Bruce White

CUSHMAN SOCIETY (\$2,500+)

David Adelman
AIG
Anonymous
Archer & Greiner
Dr. Sucha & Mr. Michael Asbell
Baker Tilly US, LLP
Dan & Reeva Benau
Jean Berg
Blank Rome LLP
George & Nancy Brodie Fund
Nancy Brodie
Bob & Cheryl Carfagno
Joe & Wendy Casillo
Vic & Eva Dawson

Timothy & Jane Duffy
Drs. Bruce & Toby Eisenstein
Ray & Ruth Fausak
John Fidler
Abel Garza
The Hart Family
Bill & Cindy Hart
Brandon Havard
Joslyn Hayes
Kathryn S. Hayes &
Victor J. Tortorelli
Maureen & Robert Heckler
Gail Heinemeyer

Charles W. Horn, III &
Patrick M. Rumaker
Becky & Eric Hunt
Clara Huntzinger
Kathy & Dave Hychalk
Intech Construction
Justamere Foundation
Kenneth & Elaine Kirby
Walter Kissel
Brian Kurtas &
Jason Ketelsen
Ms. Abbie Lampe
Jane A. Lane
Stephen & Beverly Levin

Live Nation
Joseph & Peter Lomax
Paul J. Marcotte &
Karen A. Brown
Edward & Roberta Martin
Jeanette & Richard Merion
Jack Miller Family
Foundation
Paul Mirabello
Drs. Jonni & Roger Moore
Cozen O'Connor
Parkway Corporation
Parx Casino
Ann & Lanny Patten

CUSHMAN SOCIETY, CONTINUED

Robert & Terry Patterson	Siobhán Ruane	Marlene & Joe Testa	Victoria Werth &
Rev. Lucy Pierre	Law Office of Jed Silversmith	Dr. & Mrs. Alan & Edye Twer	Kevin Jon Williams
Dr. Joel & Mrs. Roberta Porter	Rowland & Elaine Smith	Vanguard Charitable	Ruth Anne & David Woolsey
Rocco Pugliese	Richard Stafford	Marge & Rick Volpe	WSFS CARES Foundation
Mr. & Mrs. Vincent Redes & Morgan	Jesse W. & B. Lois Stuart	Volpe Family Charitable Fund	
	Mr. & Mrs. Richard T. Taylor		

JEFFERSON SOCIETY (\$1,500+)

Joey Abramowicz & Jeff Coon	Larry & Nancy George	Calvin Mayo &	John Shaffer
Susan Adamczyk	James & Wendy Gerber	Tanya Ruley-Mayo	Kathy & Don Shannon
Anonymous (3)	Katherine Glaser	Melanie Miller	Lee & Roy Shubert
Joseph & Barbara Bernert	Ron & Sandy Gould	Steven & Deborah Mongiaro	Rita A. Silvestri
Bernert Family	Joe & Otti Hallinan	Mario & Rosemarie Nicolais	Dave & Chris Stanton
Dan Bosin Associates	Mr. & Mrs. John Hammer	Nochumson P.C.	Dom Stellato
Dolores & Ronald Bowlan	Lynda & David Herendeen	Joseph & Janeen Ostaszewski	Ruth Stevens
Joseph & Suzanne Calabro	James Herman, Esq. &	Deborah Ott & Angel Macasieb	Sherryll & Ted Strand
Edward Charlton &	Brenda Lee Eutsler, Esq.	Mr. Jack & Hermene Potts	Mr. & Mrs. Donald C. Tantum
Grace Spampinato	Denise D. Hodgson	Wayne & Karen Ranbom	Jim & Irene Tholey
Kevin Chung	Tom & Paula Hollencamp	Juanita & Pete Ricchiuti	Tompkins Insurance Agencies
Connelly Foundation	Debra Jih & Noah Cook	Carl & Donna Robinson	Lori & Robert Scott Uhl
Thomas Coyne	Richard & Gail Johnson	Mr. & Mrs. Robert K. Roush, Jr.	Stephanie Ward &
Daiichi-Sankyo, Inc.	Thomas Kay	Joyce S. Sando	Paul Merollo
William Faris	Leonard Kolins &	Carl M. & Diane Schoenborn	Mr. & Mrs. Paris Washington
Anthony & Laura Fiorenza	Faye Goodman	Ellen Schwartz &	Virginia Wentzel
The Fox Foundation	Mary Kozar	Jeremy Siegel	WipFlī LLP
Michelle Franklin	Ginny & Gordon Lapinski	Louie Scottoline	Debbie & Ron Wolf
Jack & Ellie Garfinkle	Samuel P. Mandell Foundation		

KEMBLE SOCIETY (\$1,000+)

The A Cappella Project	Mr. & Mrs. William P. &	Jewish Community	Thomas P. Obade, MD
Philadelphia	Susan P. Degler	Foundation, Inc.	Hayler, Robbie &
Matthew & Megan Abbott	Dolfinger-McMahon	Dr. & Mrs. Gerard Johnson	Meighan Osborn
Stuart & Marylee Alperin	Foundation	James T. Johnston, Sr.	Marcia & Don Pizer
Anonymous (2)	Pat & Rick Dougherty	Marcia & Ned Kaplin	Kevin A. Roach
Bank of America	Dr. Charles & Mrs. Brenda	Art Kissel	The Robinson Family
Matching Gifts	Driben	Flora D. Kourmatos	Foundation
Mrs. & Mr. Emma Beckers	Robert J. Eberle Jr.	Suzanne Lemley	Susan & Bruce Rosenbam
Mr. Robert Bowen	Rick & Tammy Echevarria	Christian R. & Mary F.	Property Management
Jonathan Broh,	Kathleen Evans	Lindback Foundation	Redefined/
JKRP Architects	Dustin Flay	Mike & Amy Long	John & Lauren Sacks
Lee Brooks	Chris & Margie Giles	Ms. Vanessa Mapson	Stephen M. Sader
Tracy A. Broomall	Joan & William Goldstein	Mr. & Mrs. Marchioli	Michael A. Scully
Jeffrey & Diane Bush	Lizzie Gumula	Marsh/Philbin Charitable Fund	Deborah Sesok-Pizzini
Mayor & Mrs. Edward Campbell	Judy DiGianni	Ms. Marsh & Mr. Philbin	Steven & Lynne Spencer
Donna Carmody	Ms. Linda Harvey	Andrew & Cheryl Masterman	Marilyn L. Steinbright
Edward & Dorothy Carter	Robert Hess & Frances Sherr	Sandy McGee	Jason & Lisa Strand
George M. Chamberlain	Mr. Lee H. Hudson	Mr. Patrick & Paula McGinley	Mr. & Mrs. Sylvan Taub
Rodney & Meghan Comegys	Eric Huhn, from colleagues	Don & Sue Miller	Cathy & Frazier Van Velsor
Sara & Chris Console	at NRG, in honor of years	Patrick & Monica Moeller	Kate & Mickey Velez
Mr. & Mrs. G. Sterling Coyne II	of dedication, support	Carolyn Montgomery	Verizon Matching Gifts
Tom & Sue Crop	& kindness	Ruth & Jerry Mooney	Richard Volpe
Kim & Walt Cwietniewicz	Jim & Carol Hunsicker	Kenneth Morton	Rachel & Brian Wilner
Drs. Michael Dabrow &	Jo Hyden	Peter & Kathryn Novak	Karen Zur & Robert Biron
Manette Fine		Christian & Noelle Noyes	

PRODUCING ANGELS (\$500+)

Gerry Abelson & June Idzal	Yvonne M &	Mr. & Mrs. John D. Graham	Dr. & Mrs. Harry & Joy	Deborah Rodia
Dr. Randy Ackerman &	Bruce H Burgess	Dr. Kenneth Hallahan	Manser	Sally & Edwin Rosenthal
Dr. Donna Churlin	Kathryn & Glenn Carlson	Sondra & Joel Haness	Mr. & Mrs. Michael E.	The Rudnick Family
Actors' Equity Foundation	Vincent Caruso	Christina Harman	Markovitz	Mary & Paul Rutter
Edward & Roseann	Stephen D. Cohen	Blair Harman	Debbie & Elliott Maser	Gail Scoufield
Adamczyk	Mr. & Mrs. Peter &	BillyD Hart	Patricia & Philip McAloon	Maureen & Fred Selby
Brad Adams	Jane Cohen	Rev. William D. Hartman	Pat & Harold McIlwain	Michael & Shelley Shavel
George Ahern	Sherri & Daniel Cohen	Alicia & John Hlywak	Ms. Elynn McMullin	Robin Sherwood
Duane & Meena Amendola	Joann Coltman	Mr. & Mrs. John R. Hogan	Ms. Kyle Anne Midkiff	Susan Smith
M. Faith Angell &	Comcast Corporation	Tom & Joyce Howley	Frances Miller	Alanna Smith
Kenneth Carobus	Donald Crist	Bruce & Alice Hudson	Mary Miller	Mr. & Mrs. Joseph Somers
Anonymous	Alli Curro	Robert & June Hudson	Maurice Mitts & Irene Lane	Dr. Roman & Mrs. Lynne
Rena & Sam Barnett	Helen M. Cyzio	Frank & Ginny Jackson	Rick Moog & Pat Martin	Tatarowicz
Ms. Mary R. Barry	Donna & Bill Dalusio	Mr. Robert W. Jung	Morgan Stanley	Sarah G. & Marc D. Tischler
Carol Batman	Susan DiPaolo	Jacob Karabell	Karen & Mike Morgan	Michael P. Toner
Bruce C. Belzak	Reid & Phyllis Edwards	John & Barbara Kelly	Hermann & Barbara Moser	Susan & Robert Tribit
Barbara & Brian Binney	Dr. Beverly Emanuel	Mr. & Mrs. David Kelly	Milton J. Moser &	Umbrecht Family A Fund
Scott Bishop	Blair & Kacie-Linn Engle	Gerhart & Anne Klein	Maryann S. Pzadan	Joseph & Sandra Vasta
Amy Bohner	Jeffrey Ettinger &	Charitable Fund	Dr. & Mrs. Richard &	Susan Vettori
Janet, Dan & Jacob Boris	Ann White	Karen & Robert Landman	Bonnie Moses	Donna Visioli & Cesar Silebi
John & Linda Braceland	Anne M. Farrington	Charles B. Landreth	Emma & Richard Nashner	Walter Vogler
David & Janet Breskman	Joel & Carol Fleisher	Gerry & Heather Lee	Mrs. Joan Palitz	Lew & Hella Volgenau
Donna Britt	Glafelter Insurance Group	Theodora Lengowski	Frank & Anne Palopoli	Weber Display & Packaging
Jim & Mary Brown	Stephen Glaudel	John & Daniela Leone	Richard M. Parison, Jr.	Russ & Carol Whitman
Judy Brunner	Ahuva Gleimer	Linn One Hour Cleaners, Inc.	Matthew Pettigrew	Jim Zambon
Paul, Kaye, & Scott Bunkin	The William Goldman	David Long	Philadelphia Insurance	
Bob & Treva Burger	Foundation	Richard & Kathleen Lowry	Companies	
	Arlene Goldberg	Michael Lynagh & Peg Mertz	Stephen Rapp	

BENEFACTORS (\$250+)

Charles Adams	Jeremi Conaway	Peter & Debra Ann Harsch	Rev. & Mrs. Raymond &	Mr. & Mrs. Robert Shannon
Mary Beth & Aaron Adams	Hilary Condon	Suzanne T. Heller	Deborah Merriweather	Ira Siegal
Paul Anderson	Colleen Craighton	Cornelia L. Hewitt	Elizabeth Meyer	Patrick & Donna Smith
Scott Angelides	Lance Curley	Mrs. Martene Hinstead	Kim & Scott Meyer	Andrew Smith
Stephen & Domenick	Sophie & Robert D'Agostino	IBM Corporation Matching	Marina Meystel	Grant Smith
Angilletta	Mr. Louis D'Amico	Grants Program	Dave Miller	Maryrose Smochek
Anonymous (3)	Kathleen Dehaven	Dr. & Mrs. Geza Incze	Kathy & Lou Monticchio	Bonnie & Steven Snyder
James W. Baker	Deborah A. Delp	Lynn Jordan	Ann M. Montagna	John & Christine Sommer
Ms. Deborah Barrington	Ms. Marion McDevitt	JPMC Foundation	Mrs. & Mr. Margaret &	Gregory Stratoti
Davis	Jim DiCarlo	Ms. Shirley Kalis	Mark Morgan	John & Rochelle Thompson
Dr. & Mrs. Kenneth J.	Kevin Dillon	Catharine Keim	Megan Mueller	Wayne Tobolski
Basalik	Gail W. Dillon	Thomas & Stephanie Kelly	Ms. Marleen Nadu	Richard & Anne Umbrecht
Walter Beard, Jr.	Richard Dobrowski	Mr. & Mrs. John W. Kemble Jr.	Jeremy & Sandy Oliver	Warren Uzialko
Todd Levin & Andre Beckett	Reva Dubin	Alan & Henrietta Kiel	Mr. & Mrs. Thomas &	Sarah & John VanBuren
Ellen Berlinger	Claudia & John Dustin	Mr. & Mrs. Robert Korn	Elizabeth Pack	Richard Vanberg
Andrea Bowers	William Evans	Patricia & George Kroculik	Jarred & Nushi Parrish	Lewis Waber
Lisa S. Boyell	Sean Fahey	Andrew & Julia Leader-Smith	Bob & Susan Peck	Margot Waitz &
John Boylan	Kellie & Mike Feehan	Joe & Andrea Leahy	Dr. & Mrs. Bernard &	Gordon Manin
Mr. Mark Branson	Bruce Fine	Harry & Carol Leopold	Joy Pekala	Jeff Walsh &
Mr. & Mrs. Henry Brasteter, Jr.	Bill & Karen Fisher	Rev. Elizabeth Lerch	L. Stephen & Rochelle	Mark Klingensmith
Thomas & Carol Brightman	Bill Flannery Automotive	Devora Levinson	Perchick	Kim Wassingler
Carol E. Brown	Dodi Fordham	Mr. & Mrs. Ted Lotz	Mr. & Mrs. Steven B. Pinsky	Mr. & Mrs. Robert &
Mr. Anthony Bruno	Brandon Ford	Mr. & Mrs. James Love	Susan Pitcher	Lucinda Weiner
Marilyn R. Burgin	Don & Karen Fry	Alan & Kathleen Mackie	Mr. Frank Pittner	Michelle Weinstock
Maria Cappello	Anne Marie Gavin	Jill & Michael Magerman	Marc & Deena Platzky	Llew & Ginny Werley
David Carey	Janis & Stephen Goodman	Vivien & Allan L. Marmon	Nancy & Jon Pliskin	Mr. Leonard West
JoAnn & Ralph Carey	Ms. Barbara Grady	Wayne Marquardt &	Patricia H. Polinsky	Wayne & Paula Davis West
Natalie Caruso	Mary E. Graham	Chris Tadeo	Mr. & Mrs. Donald &	Mark Wheeler
Susan K. Casey	William Greenberg	Judith Martin	Dorothy Prais	Thomas Wholey
Ms. Nancy L. Cervino	Eleanor Gribok	James & Patricia Mayhew	Mary Prychka	Ms. Ann J. Williams
Dr. & Mrs. Howard Cetel	Douglas & Epiphany	Margaret & Ken McGill	Dr. & Mrs. Christopher	Daniel Wisniewski
George & Dorothy	Grisbaum	Patrick McGinty	Rapuanu	David & Kathleen Wojcik
Chmielewski	Ms. Laurie White Gumula	Mr. Thomas McGowan	Deborah Rodenhouser	Maureen & Joe Yanoshik
Chubb Corporate Giving	Magne Gundersen	Dorothy McMullen	Adam Rogers	Mary E. Zaccardi
Mary Anne & Nick Ciasullo	Linda Gussie	Trina McSorley	Roseann & David Sauer	Sandra Zarodnansky
John Coggins	Helen M. Hall	Kimberly Mehle	Rita Schiazzia	Susan & Kevin B. Zebrowski
Sharon & Kevin Coghlan	Tom & Rosemary Hampton	mark mendenhall	Lucinda Schwebel	

PLATINUM STAR VOLUNTEERS

Recognizing our wonderful volunteers who have made contributions to Walnut Street Theatre, in addition to giving generously of their time!

Laurie & Alyssa Altmark	Harriet K. Feinstein	David Hann	Isaak & Evonne Kruger	Barry Shapiro & Gale Raspen
Cathanne Bart	Maryanne Giampapa	Mimi Hawn	Joan Prewitt*	Emma Burr
Randi Chud & Bob Frey	Blossom Gica	Jean & Larry Holbert	Kevin & Jane* Roach	Lois Stick
Jim DiCarlo	Ms. Linda Hagarty	Brenda Hunsberger	Dr. Harry Rosenthal	
			Rebekah Sassi	
			Martin Spector	

Contributions made to Walnut Street Theatre through July 1, 2024.

Additional supporters are gratefully acknowledged online at walnutstreettheatre.org/support/ways-to-give. Every effort has been made to ensure this is a complete list; if your name is listed incorrectly, please contact the Development Office at 215-574-3580.

POP REED LEGACY SOCIETY

The Pop Reed Legacy Society recognizes individuals who have made provisions for Walnut Street Theatre through a planned gift. Because of their commitment to keeping our flame eternal, we know that our legacy will burn bright for future generations of audiences, artists, and students alike.

Anastasius and Anastasia Bandy*	Jeremy Edgecliffe-Johnson	Bernard Havard & Harold Farrey*	Miranda Markart	Mark D. Sylvester
Bruce Belzak	Rhoda & Louis Fryman	Judy Capuzzi Havard	Joan Prewitt*	Thomas C Wiernicki*
John J Burns*	Bruce & Terri Goldberg	Ken & Nancy Helledall	Kevin & Jane* Roach	
Joseph & Suzanne Calabro	John & Liz Gontarz	George L James III	Dr. Harry Rosenthal	<i>*Deceased</i>
George Chamberlain	Sylvia Green*	Don & Diane Kolodzieski	Rebekah Sassi	<i>List as of July 1, 2024</i>
Philip Drach*	Gary Grob*	Carol Lange	Martin Spector	
		Lloyd Lewis*		

CAPITAL CAMPAIGN: THE FUTURE LIVES HERE EXPANSION PROJECT

Walnut Street Theatre is humbled to thank the following donors of \$250+.

Anonymous (4)	Sean & Amy Fahey	The Otto Haas Charitable Trust	Philip & Marjorie Masters	Camryn J Schultheis
Arthur Murray International, Inc.	Dr. & Mrs. William G. Field	Guy Hackney	Michael & Deborah McKee	Kathy & Don Shannon
Dave & Bill Bailey	The Fox Foundation, In Memory of Rex & Carol Fox	Gillian Herschman	David & Lyn Montgomery	Dick & Maria Shroy
David S Blum & Mark B Woodland	Matt Garfield	Alicia & John Hlywak	Maria & Steve Needles	Adam & Christine Sigal
George Boehm	Dr. & Mrs. Robert J. Geller	Mr. & Mrs. John R. Hogan	Lynn & Cherie Oakes	Jon C. & Karen P. Sirlin
Mr. & Mrs. Warren Brandies	Gail & Samuel Goldstein	Tom & Paula Hollencamp	Pennsylvania Lumbermens Mutual Insurance Company	Charles & Clarice Thum
Drs. Lee & Ellen Brooks	Janis Goodman	In Memory of Jane Lydon Kappel	PNC Bank	Robert & Cheryl Traub
Dr. & Mrs. David Capuzzi	Mackenzi & Joshua Gross	Ken Family	Scott & Sharon Rankin	Timothy & Leora Wile
Natalie Caruso	Patrick & Shelly Guise	Alan & Henrietta Kiel	Earl & Felicia Rehmann	Richard Woosnam
Dr. Todd & Wendy Cohen	Ramona Gwynn	Carol & John Little	Dolly Beechman Schnall	
Charles J. Denny		Stephen E. Lore	Keith Schneck	

2024-2025 RENOVATION DONORS

Walnut Street Theatre is humbled to thank the following donors of \$250+

George J. Ahern	Gary & Marlene Dworkin	Denise D. Hodgson	Arthur P. & Marjorie L. Miller	Jim and Marlene Scully
Anonymous (2)	Beverly Emanuel	Tom & Paula Hollencamp	John W. Mills	Louis and Bessie Stein
The Arcadia Foundation	Jeff & Lyn Evans	Bruce & Alice Hudson	Mr. & Mrs. Francis J. Mirabello	Foundation Fund #2
Mr. & Mrs. John Ash	Jeffrey & Jane J. Ferro	Mr. and Mr. Huphoeffewicz	Richard A. Mitchell	Meryl Udell & Kelci
Robert Basile & Marie Mooney	Rosalie Folts In Memory of Ben Lipitz	Syde Hurdus Foundation	Steven & Deborah Mongiardo	Todd & Barbara Vanett
Melissa & Andrew Baumbach	Rhoda & Louis Fryman	Kathy & Dave Hychalk	Drs. Jonni & Roger Moore	Mr. & Mrs. Mickey Velez
Amy and Tom Bohner	Jack & Ellie Garfinkle	Linda Iacono	Margaret M. Morgan	Marge & Rick Volpe
Dolores & Ronald Bowlan	Ms. Michele M. Gendron	Johnson and Johnson	Daniel W. & Chieeng K. Pitchford	Ms. Maryann Ziemba
Drs. James Byers & Stephanie Chuipek	Helen M. Hall	Catharine Keim	Diana L. Racobaldo	
Dr. & Mrs. David Capuzzi	Tom & Rosemary Hampton	Erin and Brian Kent	Mr. Kevin A. Roach & Jane K. Emely-Roach	<i>List as of August 13, 2024</i>
Olympia Colasante	Bob & Louise Harman	Walter Kissel		
Sally & Tom Coultres	BillyD Hart	Mr. & Mrs. Ted Lotz		
	Bernard Havard & Judy Capuzzi Havard	Debbie & Elliott Maser		
		Patricia and Phil McAloon		
		Dr. Donald McGuigan, D.D.S.		

inspiring
A LIFE OF BEAUTY



Wood-Mode designers bring your vision to life through creativity and years of product and technical training. For more than 75 years, Wood-Mode has been developing products and training that inspire our designers, so they can inspire you.

Wood-Mode[®]
FINE CUSTOM CABINETS

Visit Wood-Mode.com to get inspired, explore and learn more.

Wall & Walsh, Inc.
(610) 789-8530
wood-mode.com

8320 West Chester Pike
Upper Darby, PA 19082