

PLAYBILL®



WALNUT STREET THEATRE
PHILADELPHIA, PENNSYLVANIA

NOËL COWARD'S

HAY FEVER



EVERY SEAT IS AN UPGRADE



TX 350



TX 500h F SPORT Performance

THE THREE-ROW LEXUS TX

Everybody wins when it comes to taking a seat in the three-row Lexus TX. This luxury SUV is loaded with innovative tech, plenty of legroom and intuitive features that anticipate everyone's needs. Whether you're the passenger princess, a new set of twins or even the family dog, everyone travels in luxurious comfort in the Lexus TX.

PLAYBILL®

President & CEO: Philip S. Birsh
Chief Financial Officer: Shamindra Jagnanan
Chief Operating Officer & VP: Alex Birsh
Director of Manufacturing: Robert Cusanelli
Executive Assistant to CEO and COO: Dalconerys Reyes

Editor-in-Chief: Diep Tran
Production Managers: Alex Near
Jenna Perrino
Prepress Manager: Seán Kenny
Prepress Specialist: Benjamin Hyacinthe
Associate Editor: Stephen Vratos
Art Director: Kesler Thibert
Creative Services Manager: Dean Greer
Managing News Editor: Logan Culwell-Block
Senior News Editor: Andrew Gans
New York Broadway Editors: Scott Hale
Khadijah Rentas
Managing Program Editor: Matt Bonanno
Program Editors: Amy Asch
David Porrello
Silvia Figueroa

Publisher, West Coast Sales & Partnerships: Glenn Shaevit
Vice President of Sales: Joshua Stone
Associate Publisher: Jolie Schaffzin
Head of Sales for

Theatrical and Regional Markets: Nicholas Foster
Director, Restaurant Advertising: Clara Barragán
National Sales Director: Grace Simpson
Advertising Sales Associate: Franchesca Reese
Advertising Sales Associate: Katie Clooney-Gainey
Sales Operations Manager: Joe Weinberg
Sales Marketing Associate: Sabrina Rasizzi
Ticket Manager: Yadira Mitchell

Chief Technology Officer: Jon Goldman
Director of Digital Operations: Andrew Ku
Creative Director: Bryan Campione
Director of Events &
Creative Strategy: Leonard Rodino
Digital Media Manager: Jennifer Marinelli
Social Media Manager: Jeffrey Vizcaino

Chairman: Philip S. Birsh
Editor in Chief Emeritus: Joan Alleman
Secretary/Treasurer: Shamindra Jagnanan

PHILADELPHIA ADVERTISING SALES

Michael Gagliardi
215-840-7628 | mgagliardi@playbill.com

Advertising Sales
729 Seventh Avenue, 4th Floor
New York, New York 10019
(212) 557-5757

PLAYBILL® is published by PLAYBILL Incorporated, 729 Seventh Avenue, 4th Floor, New York, NY 10019. Copyright 2025 by PLAYBILL Incorporated. All Rights Reserved. PLAYBILL® is a Registered Trademark of PLAYBILL Incorporated.

Contents

FEBRUARY–MARCH 2025

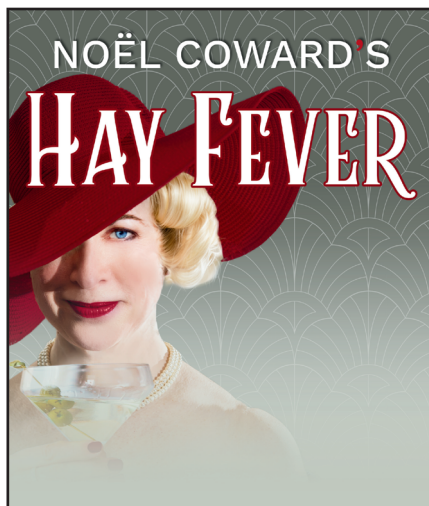
PLAYBILLDER SPOTLIGHT 2

At this Philadelphia school, the annual production involves everybody.

WELCOME 4

THE PROGRAM 6

Including Cast, Who's Who and Credits



Beauty and the Beast, For 200

At this Philadelphia school, the annual production involves everybody.

By Dylan Parent

Welcome to PLAYBILLDER Spotlight, where Playbill highlights shows from educational institutions or regional theatres and special events around the country (who have used Playbill's program-building service). By welcoming these PLAYBILLDERs center stage, we hope to give our readers a more in-depth look at theatre programs that are fostering the love of the performing arts in the next generation and the way theatre lovers are bringing Playbill along for life's big moments.

Below, we spotlight Julia R. Masterman Laboratory and Demonstration School of Philadelphia, Pennsylvania and their production of Disney's *Beauty and the Beast*. Instrumental Music teacher Kim Kelter Neu shared with Playbill just how many children came together to put up the show.

Tell us a little about yourself.

How many years have you been teaching?

Kim Kelter Neu: I've been teaching for 25 years and our musical is certainly the highlight each year.

How does your school's performing arts program impact your community?

Our school musical brings together our community, involving over 200 students from both middle and high school. Students make the sets and the props as well as run the sound control, the lights, play in the orchestra, and, of course, star in the show! Families leave our show amazed at what the students have achieved.

How do you choose shows for your students?

When we choose our show, we always pick something that involves all the students. It must have a chorus and a full orchestra. This limits our choices but allows us to include the most students. We also must keep in mind that our school is grades five through 12, so



PHOTO COURTESY OF MASTERMAN HIGH SCHOOL

whatever show we pick must work for fifth and 12th graders alike. *Beauty and the Beast* was an easy and perfect choice this year!

What reactions do you expect to see in students when they see their name printed in this Playbill for the first time?

Students love seeing the finished Playbill, especially the ads their family and friends put in for them.

To design Broadway-quality programs for your next show, head to PLAYBILLDER.com.

PLAYBILLDER®

BUILD YOUR OWN PLAYBILL

Your Brand
Hand Delivered
to Your
Target Audience!

**Contact us today
to reserve space in
PLAYBILL.**

Your Sales Representative:

Michael Gagliardi
mgagliardi@playbill.com
215.840.7628

PLAYBILL

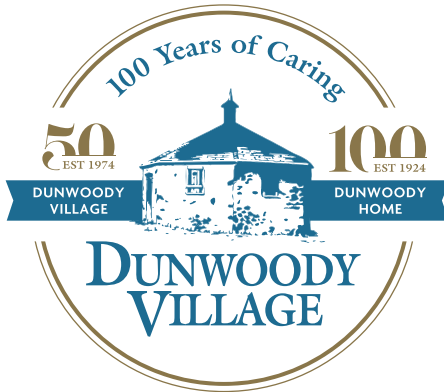
AQUA

An Essential Utilities Company



**Proud Sponsor of the
Performing Arts at the
Walnut Street Theatre since 2009**

100 Years and Counting



(610) 359-4400 | www.dunwoody.org | 3500 West Chester Pike • Newtown Square, PA 19073
Independent Living • Rehabilitation • Personal Care • Skilled Nursing • Memory Support • Home Care



Proud Sponsor of Walnut Street Theatre



A Continuing Care Retirement Community | ★★★★★ Five-Star Rated Healthcare



FOUNDED 1808

AMERICA'S OLDEST THEATRE – PHILADELPHIA'S MOST POPULAR THEATRE COMPANY

WALNUT STREET THEATRE

825 WALNUT STREET • PHILADELPHIA, PA 19107

Dear Theatregoer,

Welcome back to the Walnut Street Theatre! We are delighted to have you join us for our production of Noël Coward's HAY FEVER!

Up next on our Mainstage, our season will culminate with DREAMGIRLS, the sensational Broadway musical, inspired by Diana Ross and the Supremes.

I am also elated to share our legendary lineup for our 217th season: MILLION DOLLAR QUARTET, A CHRISTMAS STORY THE MUSICAL, SHERLOCK HOLMES: THE GREAT DETECTIVE, Edward Albee's A DELICATE BALANCE, and 1776 THE MUSICAL. Secure the best seats in the house for this historic season by renewing and subscribing today!

In addition to our unforgettable Mainstage Season, the Theatre School at Walnut Street Theatre is in session for the spring semester, welcoming students of all ages. I encourage anyone with a passion for life to explore our class offerings. I'm also pleased to announce Walnut Street Theatre for Kids this season, featuring the soaring musical adventure Disney's ALADDIN JR. in the spring.

Now, sit back, relax, and enjoy the infectious comedy of Noël Coward's HAY FEVER. We're ecstatic to welcome you to the theatre and look forward to seeing you again soon!"

Sincerely,

Bernard Havard,

President and Producing Artistic Director

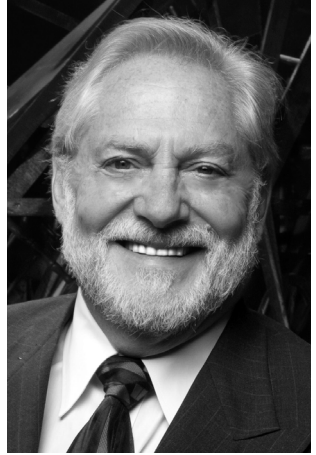


Photo: Mark Garvin

Explore the best hotel deals in New York City through **PLAYBILL!**

Booking your hotel through Playbill offers you the best pricing and amenities, including...



Food and Beverage Credit



Free Breakfast



Your Hotel Rewards Points



Waived Resort Fees



Early Check-in*
Late Check-out*



Room Upgrades*

*when available

PlaybillTravel.com/Hotels



PLAYBILL Partner Hotels

Get unbeatable value with exclusive benefits





FOUNDED 1808

AMERICA'S OLDEST THEATRE – PHILADELPHIA'S MOST POPULAR THEATRE COMPANY

WALNUT STREET THEATRE

825 WALNUT STREET • PHILADELPHIA, PA 19107

BERNARD HAVARD

President and Producing Artistic Director

February 11 – March 9, 2025

Noël Coward's **HAY FEVER**

Set Design

ROMAN TATAROWICZ

Costume Design

MARY FOLINO

Lighting Design

TESS JAMES

Sound Design

**CHRISTOPHER
COLUCCI**

Wig Design

AMARI CALLAWAY

Director of
Production

SIOBHÁN RUANE

Stage Managers

**ABIGAIL STURGIS
JENN GALLO**

Associate
Artistic Director

BRIAN KURTAS

Directed by

BILL VAN HORN

SPONSORED BY

AQUA™

ARTIST SPONSOR

CELEBRATING 125 YEARS OF

NOËL COWARD

PROUD PARTNER OF
THE NOËL COWARD FOUNDATION'S
ANNIVERSARY CELEBRATION.

MARK D. SYLVESTER

Managing Director

General
Manager

JESSICA DOHENY

Director of
Development

JEFF COON

Director of
Education

T.J. SOKSO

Director of Marketing
and Public Relations

STEPHEN RAPP

CAST

(in order of appearance)

| | |
|------------------------|----------------------|
| Sorel Bliss | Anna Bailey* |
| Simon Bliss | Brandon O'Rourke* |
| Clara | Charlotte Northeast* |
| Judith Bliss | Alicia Roper* |
| David Bliss | Dan Olmstead* |
| Sandy Tyrell | Jared Calhoun* |
| Myra Arundel | Patricia Noonan* |
| Richard Greatham | Harry Smith* |
| Jackie Coryton | Ellie Mooney* |

UNDERSTUDIES

AVERY BREYNE-CARTWRIGHT (Jackie Coryton),
BRIAN SCOTT CAMPBELL (Richard Greatham),
ANDREA ROSE CARDONI (Myra Arundel),
NATHALIE DALZIEL-BACHMAN (Clara), PETER HERRICK (David Bliss),
ERICA LOVE (Sorel Bliss), LINDSEY MCCUE (2nd cover Sorel Bliss),
BRIANA MYERS (2nd cover Jackie Coryton), ISAAC RIPLEY (2nd cover Simon Bliss),
MATTHEW ROBERTSON (Sandy Tyrell), BRANDON TYLER (Simon Bliss),
JOEY B. WILLIAMS (2nd cover Sandy Tyrell), KATHRYN WYLDE (Judith Bliss)

SETTING

The action of the play takes place in the hall of the Blisses' house at Cookham in June.

TIME

ACT I: Saturday afternoon
ACT II: Saturday evening
ACT III: Sunday morning

There will be one 20-minute intermission between Act I and Act II,
and a pause between Act II and Act III.

*The Actors and Stage Managers employed in this production are members of Actors' Equity Association, the theatre union of Professional Actors and Stage Managers in the United States.

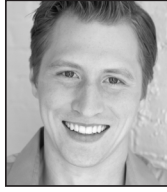
The videotaping or other video or audio recording of this production is strictly prohibited.

Artwork by BWJ Enterprises LLC
Photo by: Ashley Smith, Wide Eyed Studios
Pictured: Alicia Roper

CAST



**Anna
Bailey**



**Jared
Calhoun**



**Ellie
Mooney**



**Patricia
Noonan**



**Charlotte
Northeast**



**Dan
Olmstead**



**Brandon
O'Rourke**



**Alicia
Roper**



**Harry
Smith**

WHO'S WHO IN THE CAST

ANNA BAILEY (*Sorel Bliss*) is a Reading, PA-based actress and realtor, where she lives with her two sons and husband, Kip. Regional: Edward Albee's *Who's Afraid of Virginia Woolf?* (WST); *Matilda*; *Hank Williams: Lost Highway*; *Gathering Blue*; *The Wizard of Oz* (Gretna Theatre); *Annie* (Totem Pole Playhouse); *Goodnight, Mrs. Puffin*; *Nana's Naughty Knickers* (Rainbow Dinner Theatre). Endless gratitude to Kip, Family, Bernard, Brian, Mark, and to this wonderful crew and cast! @anna_bailey_knauer

JARED CALHOUN (*Sandy Tyrell*) is a former WST acting apprentice, thrilled to be making his mainstage debut! WST: *A Christmas Carol* (Bob Cratchit). Regional (Select): *A Closer Walk with Patsy Cline* (Bristol Riverside Theatre); *Holiday Inn* and *Moon Over Buffalo* (Candlelight Theatre); *Parade* (Alluvion Stage); *Midsummer Mixtape* (Delaware Shakespeare). Love to my family and fiancée Leah. @jaredmcalhoun

ELLIE MOONEY (*Jackie Coryton*) WST highlights include *A Christmas Story*; *The Wizard of Oz*; *Harvey*; *The Importance of Being Ernest*; *Sister Act*; and Disney's *The Little Mermaid*. Regional Favorites: *Something Rotten!* (Florida Studio Theatre); *My Fair Lady* (Trinity Repertory Company); *The 25th Annual Putnam County Spelling Bee* (Portland Center Stage) and *The Drowsy Chaperone* (Flat Rock Playhouse). Thanks to WST, BVH, DBO, and Basile Family! elliemooney.com

PATRICIA NOONAN (*Myra Arundel*) WST debut! Favorite credits include NYC: *Death Takes a Holiday* (Roundabout Theatre Company); *Carousel* (Lincoln Center for the Performing Arts); *Merrily We Roll Along*; *Most Happy Fella*; *Annie Get Your Gun*; *Where's Charley?*; *Girl Crazy* (City Center); *Baby Case* (Signature Theatre Company); *Signs of Life* (Amas Musical Theatre); *The Brontes* (TIA). Regional: The Arden Company, Ogunquit Playhouse, La Mirada Theatre for the Performing Arts, Barrington Stage Company, Theatreworks Silicon Valley, Theatre Under The Stars, Virginia Opera, The Rev, Guthrie Theater. Film/TV: *Light of the Moon*; *Law & Order: SVU*. Proud teaching artist and book writer/lyricist for musicals *Ara*; *Sweetwater*; and *Learning How to Drown*. Much love and thanks to my family & friends onstage and off.

CHARLOTTE NORTHEAST (*Clara*) is a three-time Barrymore Award winner. WST: *The Mousetrap*; *An Ideal Husband*. Other credits: PAC; Act II Playhouse; Theatre Exile; Passage Theatre Company; Azuka Theatre; Montgomery Theater; Hedgerow Theatre Company; Orbiter 3;

and Delaware Theatre Company. Co-creator and performer of *The Complete Works of Jane Austen, Abridged*, published on Samuel French. Love to D & J. Visit: www.charlottenortheast.com

DAN OLMSTEAD (*David Bliss*) Notable Walnut Street Theatre credits include: *Young Frankenstein*; *Amadeus*; *Popcorn Falls*; *Rodgers + Hammerstein's South Pacific*; *Good People*; *Arsenic and Old Lace*; *Fiddler on the Roof*; *Enchanted April*; *Of Mice and Men*; *Fallen Angels*; *High Society*; Roald Dahl's *Matilda the Musical*; *1776*; and *The Constant Wife*. Dan is truly delighted to return to the Walnut Street Stage and work again with such dear friends and family!

BRANDON O'ROURKE (*Simon Bliss*) Edward Albee's *Who's Afraid of Virginia Woolf?* (WST); *A Woman of No Importance* (WST); *Romeo & Juliet* (The Media Theatre); *Peter & the Starcatcher* (WST). However, the highlight of his career was the two seconds he spent in a 2008 Minute Rice commercial. While not on stage, Brandon is a Creative Director, Cinematographer, & Designer for various production houses, brands, and foundations including MKBHD, Google, The Obama Foundation, & Apple. Much love to family, friends, & four legged siblings.

ALICIA ROPER (*Judith Bliss*) is happy to be back at the Walnut where she previously did: Noël Coward's *Blithe Spirit*; *Cat on a Hot Tin Roof*; *A Woman of No Importance*; *The Curious Incident of the Dog in the Night-Time*; *Enchanted April*; *The Constant Wife* and *The Philadelphia Story*. Also: Broadway, Off-Off-Broadway, Mark Taper Forum, Two River Theatre, George St. Playhouse, Yale Rep, Annex Theatre and Cleveland Playhouse among others. MFA: Yale School of Drama. Love to Rob, Max, & Josh.

HARRY SMITH (*Richard Greatham*) For WST: *The Mousetrap*; *An Ideal Husband*; *And Then There Were None*. Broadway: *King Charles III*; *Hangmen*. Off-Broadway: Robert Icke's *Hamlet and Oresteia* (Park Avenue Armory); *Plough and the Stars*; *Juno and the Paycock*; *Shadow of a Gunman* (Irish Rep). Regional: Berkshire Theatre Group; Guthrie Theater; Two River Theater; Shakespeare Theatre Company of D.C.; Seattle Rep; American Conservatory Theater; Delaware Theatre Company; The Wilma Theater; People's Light; Lantern Theater Company; Inis Nua. U.K.: Edinburgh Royal Lyceum; Bristol Old Vic; Third Party; Tobacco Factory; Taunton Brewhouse. Film/television: *Freedom*; *The Goldfinch*; *The Good Wife*; *Crossbones*; *The Blacklist*; *Elementary*; *Jessica Jones*; *Sprung*; *DOC*. Training: Bristol Old Vic Theatre School;



Broadway

from Bulgaria
to Budapest

June 21–28, 2026

Onboard Amawaterways' *AmaMagna*



Great Broadway talent to be announced!



Playbill Travel has fully chartered AmaWaterways' luxurious *AmaMagna* for an intimate and exquisite European adventure on the Danube River. After starting our journey in southern Romania and the top of Bulgaria, we finish the trip in the storied city of Budapest, filled with historical marvels, excellent cuisine, and exciting excursion options for guests.



Traveling along this wonderous river, Playbill Travel passengers will experience the same five-star experience all Playbill Cruises offer: high-end accommodations, enjoyable excursions by day, nightly cabaret concerts from our dazzling roster of Broadway's brightest stars, all while being surrounded by fellow theatre-lovers. Join us for what promises to be one of the most beautiful and memorable Playbill Travel adventures ever.

For more information visit PLAYBILLTRAVEL.COM.

To Reserve Your Cabin or Suite call
PLAYBILL TRAVEL at **866.455.6789**



WHO'S WHO

Cambridge University. Thanks to Ann Kelly and BWA.

NOËL COWARD (*Playwright*) Born in 1899 in Teddington, England, Noël Coward maintained an illustrious and multifaceted career as actor, director, producer, playwright, songwriter, cabaret artist and author. Following his first adult role in *Charley's Aunt*, and the writing of his first song, "Forbidden Fruit" in 1915, he went on to produce and star in many of his hit plays and musicals, including *The Vortex*; *Hay Fever*; *Bitter Sweet*; *Private Lives*; *Design for Living*; *Tonight at 8:30*; *Present Laughter*; *This Happy Breed*; *Sail Away*; *Suite in Three Keys*; and *Blithe Spirit*. His film work includes *Cavalcade* (Academy Award, Best Picture); *In Which We Serve*; *Brief Encounter* and *The Scoundrel*. He published the books *A Withered Nosegay*; *To Step Aside* (a collection of short stories); *Pomp and Circumstance* (a novel) and his two-part autobiography, *Present Indicative* and *Future Indefinite*. Coward was knighted in 1970.

BILL VAN HORN (*Director*) Recently at the Walnut: *Elf The Broadway Musical* (2024); Disney's *Beauty and the Beast*, Disney's *The Little Mermaid*; *A Woman of No Importance*; *Gifts of the Magi*; *Annie*; *A Funny Thing Happened on the Way to the Forum*; *Oz*; *A Christmas Story*; *Mary Poppins*; *Driving Miss Daisy*; *Elf The Broadway Musical* (2013); *The Prince*; *Fiddler on the Roof*. Directed: *Civil War Voices*; *The Curious Incident of the Dog in the Night-Time*; *The Glass Menagerie*; and created and starred in *O Captain, My Captain* (*Whitman's Lincoln*). Bill is a permanent member of the acting company at Theatre at Monmouth in Maine. Proud member of Actors' Equity.

ROMAN TATAROWICZ (*Set Design*) Walnut: *Driving Miss Daisy*; *Beautiful – The Carole King Musical*; Edward Albee's *Who's Afraid of Virginia Woolf?*; *Elvis – A Musical Revolution*; *Cat on a Hot Tin Roof*; *Rocky, the Musical*; Noël Coward's *Blithe Spirit*; *The Best Man*; *A Woman of No Importance*; *The Curious Incident of the Dog in the Night-Time*; *The Humans*, in addition to many in the studio space. Selected Off-B'way: *The Banana Monologues* (Acorn Theatre); *Honky* (Urban Stages); *Mother Courage, Dames at Sea*, *The Threepenny Opera* (Jean Cocteau Rep.). Many Off-Off-B'way including *Bee-Luther-Hatchee* (Audelco Award nom). Regional credits: Capital Rep., Merrimack Rep., Florida Studio Theatre, Azuka Theatre, Act II, InterAct, Bristol Riverside, People's Light, Pa. Shakespeare Festival, Delaware Theatre Company and ETC (Santa Barbara). Member United Scenic Artists Local 829. tatarowicz.com

MARY FOLINO (*Costume Design*) is currently Arcadia University's Costume Shop Manager and resident costume designer, having previously worked as the Walnut's Costume Shop Manager, and as the Costume Director of the Milwaukee Repertory Theater. Favorite WST designs include *Holiday Inn*; *Young Frankenstein*; *Rocky, the Musical*; *Beautiful – The Carole King Musical*; and *Jersey Boys*. Many thanks to Bernard and the WST family, all my collaborators on this piece, and the amazing costume and wardrobe staff!

TESS JAMES (*Lighting Design*) is a Lighting Designer whose recent projects include *The Song of the Nightingale*; *Winter's Tale*; *Assassins*; *The Cradle Will Rock* and *The Running Show* with Monica Bill Barnes & Company. She's a full-time Lecturer at Princeton University and a Master Teaching Artist at the Roundabout Theater Company.

CHRISTOPHER COLUCCI (*Sound Design*) Recent work: *Red* (Theatre Exile); *The Lehman Trilogy* (Arden Theater Company); *The Last Yiddish Speaker* (InterAct Theatre Company); *The Comedy of Errors* (Lantern Theater Company) and *Driving Miss Daisy* here at the Walnut. 2016 Pew Fellowship in the Arts; 8 Barrymore Awards for Outstanding Original Music and Sound Design; Independence Fellowship in the Arts (2012, 2019); MA in Philosophy from Western Kentucky University. BA in Philosophy/Theology from Eastern University. <https://soundcloud.com/cmsound> https://www.instagram.com/christopherm_colucci/

AMARI CALLAWAY (*Wig Design*) is a freelance wig and costume designer who hails from Las Vegas, NV. They moved to Philadelphia in 2017 for the wig and wardrobe apprenticeship right here at the Walnut Street Theatre, and they've been working in the area ever since! You may have seen Amari's wig designs on the Walnut stage in *The Winter Wonderettes*; and *Sherlock Holmes: The Adventure of The Speckled Band*; and recently *Driving Miss Daisy*.

ABIGAIL STURGIS (*Stage Manager*) This is Abigail's 2nd season at WST. Select stage management credits: WST: *Driving Miss Daisy*; *Jersey Boys*; *Groucho: A Life in Revue*; Disney's *Beauty and the Beast*; *Moana, Jr.*; Media Theatre: *Rent*; Quintessence Theatre Group: *Flyin' West*; *The Skin of Our Teeth*; Opera Philadelphia: *10 Days in a Madhouse*; Act II Playhouse: *A Couple of Swells*; *Really Good Tidings*. Proud graduate of Temple University. Love to Jon and Minnie.

JENN GALLO (*Assistant Stage Manager*) is a Delco native, and glad to be returning to the Walnut for *Hay Fever*. Recent credits include *Elf*

WHO'S WHO

The Broadway Musical (WST); *Jagged Little Pill* (National Tour); *Once* (Berkshire Theatre Group); and *Islander* (Playhouse 46). Proud Penn State alum. Please show some love and support to @hrc @trevorproject @aclu_nationwide

SIOBHÁN RUANE (*Director of Production*) This is Siobhán's 12th season at WST. With over 20 years in the business, Siobhán has worked internationally as a Production Manager and Stage Manager. Previously, Siobhán held the faculty position of Stage Management Advisor at Florida State University's School of Theatre. Additional credits include Cirque du Soleil, Norwegian Cruise Line, Cirque Productions, and various regional theatres. Siobhán holds an undergraduate degree from Rutgers University, an MFA from the University of Delaware, and is (proudly!) originally from the Jersey Shore.

BRIAN KURTAS, CSA (*Associate Artistic Director*) has been associated with WST since 2007. He began his career here as a performer and in the professional apprenticeship program and has since dedicated himself to bringing artists together. He now serves our artists and audiences in the various capacities of casting, directing, programming, and literary management, as his function is to identify the highest quality of artists for our historic theatre. His vision behind unforgettable live experiences and storytelling has become a creative solution from the stage to the screen - he spent 4 seasons as the Executive Producer of Gretna Theatre, has worked on television networks and films including TLC and HGTV, and helped create events and entertainment for brands such as T-Mobile and Walmart while at Live Nation. Originally from Lancaster, Brian is a proud Temple alum and a member of the Casting Society of America.

MARK D. SYLVESTER (*Managing Director*) Mark is proud to be celebrating his 30th season at WST. His extensive career has spanned Summer Stock to Broadway as an actor, stage manager, box office treasurer, theatre manager, marketing

and public relations director and general manager. After several years working with commercial theatre, he has devoted his career to non-profit theatre companies since 1987. To date, Mark has been associated with more than 500 stage productions. An avid collector of musical theatre recordings, his collection contains over 3,500 cast albums from around the world. Widely regarded as a theatrical marketing expert, Mark lectures and consults with organizations internationally. He has served on several boards including seven years with the National Alliance for Musical Theatre where he now holds the honorary position of Board Emeritus and the Advisory Committee of Samuel French, the international play publisher and licensing company. With Bernard Havard he co-authored the book *Walnut Street Theatre*. Since he joined WST in 1994, it became the most subscribed theatre company in the world.

BERNARD HAVARD (*President and Executive Producing Artistic Director*) *Vox Populi* (The Voice of the People) was written on WST Playbills in the 1800s. Whenever WST has strayed from a populist program, the theatre has gone bankrupt. When I came here 42 years ago, we had no programs and no audience. Today we enjoy one of the largest subscription bases of any theatre in the world. So, my thanks to our loyal audience and a warm welcome to newcomers who enjoy and believe in what we do. I admire the artists who dedicated their lives to the theatre and WST, particularly. Our theatre is a non-profit 501-C3 institution, and we rely on contributed income to extend our reach into the community. Last season we reached more than 41,000 students in our city schools. We have 19 esteemed trustees who give their time, wisdom, and contributions to help guide this historical treasure. I came to WST in 1982, and I am as excited now about our future as I was in the beginning. My heartfelt thanks to all who enter this theatre. For my biography, go to About Us on our website at WalnutStreetTheatre.org

WALNUT STREET THEATRE
825 WALNUT STREET, 215-574-3550

BOARD OF TRUSTEES

President Bernard Havard
Chair Francis J. Mirabello, Esq.
Immediate Past Chair Scott Rankin
Chairman Emeritus Louis W. Fryman, Esq.
Chairman Emeritus Matthew Garfield
Chairman Emeritus John D. Graham
Vice Chair/Secretary Patrick Mullen
Treasurer Robert L.B. Harman
Jeffrey Ferro Gene Schriver
John Fidler Daniel J. Schuller
Jack R. Garfinkle, Esq. James D. Scully, Jr.
Melita J. Jordan Ellen Tobie
Richard A. Mitchell, Esq. Joseph Villani
Jennifer Merves Robbins David Wyher
Tanya Ruley-Mayo

ALUMNI TRUSTEES

Ashok N. Bakhru, Bruce Belzak, George M. Chamberlain Jr.,
Thomas J. Coultles, Louis J. D'Ambrosio, Joseph E. Ellis Sr.,
Barry Genkin, Terry Graboyes, Ramona Gwynn,
Denise Daher Hodgson – Chairwoman Emerita,
Jeremy D. Johnson, Kenneth E. Kirby, Theresa E. Loscalzo (Esq.),
Craig R. MacQueen, Kyle Anne Midkiff, Ann Marie Richter,
Renee H. Rollin, Keith D. Schneck,
Martin W. Spector, James M. Tholey

HONORARY MEMBERS

Ms. Carole Haas Gravagno, Ms. Susan Sherman,
Hon. Mark Squilla, Ms. Lily Tomlin

WALNUT STREET THEATRE STAFF

ARTISTIC

President and Producing Artistic Director Bernard Havard
Associate Artistic Director Brian Kurtas

ADMINISTRATION

Managing Director Mark D. Sylvester
General Manager Jessica Doheny
Controller Michael S. Armento
Management Assistant Maya Holliday
Audience Services Manager Angelia Evans
Associate Audience Services Manager Brendon Kennedy
Refreshment Service Manager Tony Houck
Facilities Manager Bruce Myers
Assistant to the Facilities Manager Tony Sample
Facility Services Christopher Bradley, Airiell Foster,
Demetria Foster, Lamont Godley, Camielle Johnson,
Ashura Merriweather, Marquis Miller, Charles Phillip

DEVELOPMENT

Director of Development Jeff Coon
Development Associate Billy D Hart
Development Associate Lizzie Gumula
Development Apprentice Zachary Sherry

EDUCATION

Director of Education T.J. Sokso
Associate Director of Education Amanda Pasquini
Education Programs Manager Maya Chester-Ziv
Education Apprentice Devon Duffy
Acting Apprentices Lindsey McCue, Briana Myers,
Isaac Ripley, Joey Williams
Teaching Artists Dave Allison, Julianna Babb,
Hallie Berger, Val Berger, Andy Boettcher, Jason Boyer,
Andrea Cardoni, Hannah Catanoso, Jake Collins, Elliot Davis,
Walter Dodd, Sharon Geller, Dina Gustovsky, Heidi Hayes,
Adam Hoyak, Annette Kaplafka, Brian Kurtas,
Donovan Lockett, Eli Lynn, Adam Mandala,

Lindsay Marcus, Kimberly Maxson, Kennedy McAlister,
Taylor J. Mitchell, Domenica Passio, David Pica,
Nicole Renna, Immanuel Rimmer, Steven Rishard,
Alicia Roper, Faith Sacher, Leah Senseney,
Connor Shields, Devon Sinclair, Arielle Sosland,
Susan Stevens, Grant Uhle, Alice Yorke

MARKETING

Director of Marketing and Public Relations Stephen Rapp
Communications Manager Kelsey Sherlock
Marketing Associate Jennifer Epstein
Group Sales and
Ticketing Services Associate Rachel Scorpio
Marketing Apprentice Lindsay Goldschmidt
Box Office Treasurer Rick Dougherty
Assistant Box Office Treasurer Tom Brzozowski
Ticketing Services Manager Jeff Berry
Associate Ticketing Services Manager Luke Solacoff
Ticketing Services Associate Ja'Nell Hall-Ragin
Ticketing Services Apprentice Emily Fonah
Ticketing Services Agents Deon Davis, Laney Dempsey,
Kiana Douglas, Susannah Gale, Sabina Jafri, Logan Keeler,
Rahsaan Kerns, Maryann Kuzan, Christopher LeVere,
Leslie Monaco, Irmak Sagir, Courtney Taylor
Outbound Sales and Telefunding Ann Marie Borget,
Zachary Sherry, Lauren Townsend

PRODUCTION

Director of Production Siobhán Ruane
Assistant Production Manager Megan Lampron
Production Technical Supervisor Matt DeMascolo
Production Administrator Jess Fowler
Production Apprentice Sophia Devereux
Stage Manager Abigail Sturgis
Assistant Stage Manager Jenn Gallo
Stage Management Apprentice Jon Balagtas
Technical Director Brian Froomjian
Assistant Technical Director Eli Marsh
Technical Production Associate Tyler Bogie
TD/Shop Management Apprentice Caroline Herring
Head Carpenter Jon Wheeler
Carpenters Kerrin Frank, Jon Marsella,
Stas Kosinski, Carter Sinquefield
Carpentry Apprentices Maya Lebron, Carlos Sedano
Scenic Charge Leslie Curd
Scenic Artists Thomasin Parnes, Lauren Sellers
Scenic Apprentice Mo Lehmborg, Aria Smith
Properties Manager Shannon O'Brien
Prop Rental Coordinator Lindsey Silver
Head Properties Artisan Natalie Reichman
Properties Artisan Matthew Barth
Properties Apprentices Kelly Devlin, Blake Johnson, Clare Wislar
Costume Shop Manager Natalia de la Torre
Assistant Costume Shop Manager Anya Loverdi
Draper and Costume Associate Chloe Swider
Costume Apprentices Emily Marcus, Adriana Soto Ruiz
Stitchers Melissa Drago, Gretchen Ellis, Kayla Speedy
Lead Dresser Alison Levy
Wig and Make-Up Coordinator Claire Waid
Wig and Wardrobe Apprentice Madeline Segar
Costume Stock Coordinator Elizabeth McNamara

Stage Crew

Head Carpenter Mick Coughlan
Head Electrician Amber Faulhaber
Head Flyman David Cain
Head Sound Adam Orseck
Head Props Valerie Bannan
Seasonal Assistant Sound Ryan Erlichman
Seasonal Assistant Lighting Kathryn Morgan
Stage Crew Apprentice Elliot Cetinski



Actors' Equity Association ("Equity"), founded in 1913, is the U.S. labor union that represents more than 51,000 professional Actors and Stage Managers. Equity fosters the art of live theatre as an essential component of society and advances the careers of its members by negotiating wages, improving working conditions and providing a wide range of benefits, including health and pension plans. Actors' Equity is a member of the AFL-CIO and is affiliated with FIA, an international organization of performing arts unions. #EquityWorks



UNITED SCENIC ARTISTS REPRESENTS DESIGNERS FOR THE AMERICAN THEATRE



BACKSTAGE EMPLOYEES AND SCENE SHOP EMPLOYEES ARE REPRESENTED BY THE INTERNATIONAL ALLIANCE OF THEATRICAL STAGE EMPLOYEES. (I.A.T.S.E.)



The mission of the Walnut Street Theatre Company is to sustain the tradition of professional theatre and contribute to its future viability and vitality. It does so through the production and presentation of professional theatre; the encouragement, training, and development of artists; the development of diverse audiences; and the preservation and chronicling of its theatre building, a National Historic Landmark.



Independence
STARTS HERE!

Walnut Street Theatre is a member of the Greater Philadelphia Cultural Alliance, Citizens for the Arts in Pennsylvania, and the League of Historic American Theatres. Walnut Street Theatre receives state arts funding support through a grant from the Pennsylvania Council on the Arts, a state agency funded by the Commonwealth of Pennsylvania.



vsa
PENNSYLVANIA
The State Organization
on Arts and Disability

Accessibility Equipment, Training and Marketing provided by Independence Starts Here, the statewide cultural accessibility program of VSA PA/Amaryliss Theatre Co., jointly led in different regions in PA by cultural partners in that region. In Greater Philadelphia, Independence Starts Here is jointly led by Art-Reach, Inc.



ART · REACH

Walnut Street Theatre receives additional season operating support from Actors Equity Foundation and Independence Foundation.



PNC
arts alive
be part of art

Arts Alive Year 16: Walnut Street Theatre Turns the "DREAM" of Diverse Arts Participation into Reality.

COMING ATTRACTIONS AT THIS THEATRE!

MAINSTAGE

Our 2024–25 Season concludes with

- *Dreamgirls* (Starts March 25)

Our 2025–26 Season includes

- *Million Dollar Quartet*
- *A Christmas Story The Musical*
- *Sherlock Holmes: The Great Detective*
- *Edward Albee's A Delicate Balance*
- *1776 The Musical*

Buy a subscription or individual tickets
at **215-574-3550**,

WalnutStreetTheatre.org
or Ticketmaster.com, 800-982-2787

WST FOR KIDS

Disney's Aladdin JR.

(April 26–May 11, 2025)

WALNUT STREET THEATRE SCHOOL

Contact us about our
Spring Classes and
Camp Walnut.

Call 215-574-3550, ext. 510
or register online at
walnutstreettheatre.org

THANK YOU TO OUR GENEROUS SUPPORTERS!

Walnut Street Theatre wishes to express gratitude to the following individuals, corporations, foundations, and government agencies for their generous contributions in support of America's Oldest Theatre.

FORREST SOCIETY (\$25,000+)

Friends of Education
Hamilton Family Charitable Trust
Bob & Louise Harman
Bernard Havard &
Judy Capuzzi Havard
The Hearst Foundations, Inc.
The Hellendall Foundation

Syde Hurdus Foundation
KPK Development Co, LP
Mr. & Mrs. Francis J. Mirabello
The Neag Foundation
PA Department of Community &
Economic Development
PECO

PNC Arts Alive
Scott & Sharon Rankin
James & Marlene Scully
Louis & Bessie Stein Foundation
Fund #2
Joe & Kim Villani

BOOTH SOCIETY (\$10,000+)

Paul M. & Mary Lee Anderson
C & N Bank
CBIZ, Inc.
Delta Community Supports
Disney Worldwide Services
Frances Emmons-Anastasi &
Christopher Emmons
Essential Utilities, Inc.
Jeff & Janie Ferro
Giunero Floro

Dennis & Jennie Franklin
Fulton Bank
Matt Garfield
Herman Goldner Company
Horace W. Goldsmith Foundation
Huntington Bank
Independence Foundation
Independence Blue Cross
Johnson Kendall & Johnson Inc.
Megawholesale, Inc.

Richard A. Mitchell & Marna Carlton
Pennsylvania Council on the Arts
Pennsylvania Lumbermens Mutual
Insurance Company
Philadelphia Cultural Fund
The Remmel Foundation
Mark D. Sylvester
USLI
David Wyher

BARRYMORE SOCIETY (\$5,000+)

Abington Neurological
Associates
Anonymous
Arthur Murray's Rising Star
World Foundation
Drs. James Byers &
Stephanie Chuipek
Sam Driban &
Marilyn Shadis
Elliot's Vending Company, Inc.
Ferreira Law

Rhoda & Louis Fryman
Anne & Philip Glatfelter III
Family Foundation
Patrick & Shelly Guise
The Haley Foundation
Jerry & Kate Hathaway
Jane M. James
Johnson & Johnson Family
of Companies
William M King Charitable
Foundation

Lomax Consulting Group
Philip & Margaret Masters
Dr. Sandra Mather
Mr. & Mrs. Edward J. Mitchell
Maureen E. Molloy
Pat & Jacki Mullen
The Payne Family Foundation
Dr. Mitchell Rodman
Royer Cooper Cohen
Braunfeld LLC

Keith Schneck &
Linda Chisholm
Roger & Kathi Smith
The Ethel Sergeant Clark
Smith Memorial Fund
William R. Snell, Esq.
Spark Therapeutics
TD Charitable Foundation
Universal Health Services
Mr. Bruce White

CUSHMAN SOCIETY (\$2,500+)

David Adelman
AIG
Anonymous
Archer & Greiner
Dr. Sucha & Mr. Michael Asbell
Baker Tilly US, LLP
Dan & Reeva Benau
Jean Berg
Blank Rome LLP
George & Nancy Brodie Fund
Nancy Brodie
Bob & Cheryl Carfagno
Joe & Wendy Casillo
Vic & Eva Dawson

Timothy & Jane Duffy
Drs. Bruce & Toby Eisenstein
Ray & Ruth Fausak
John Fidler
Abel Garza
The Hart Family
Bill & Cindy Hart
Brandon Havard
Joslyn Hayes
Kathryn S. Hayes &
Victor J. Tortorelli
Maureen & Robert Heckler
Gail Heinemeyer

Charles W. Horn, III &
Patrick M. Rumaker
Becky & Eric Hunt
Clara Huntzinger
Kathy & Dave Hychalk
Intech Construction
Justamere Foundation
Kenneth & Elaine Kirby
Walter Kissel
Brian Kurtas &
Jason Ketelsen
Ms. Abbie Lampe
Jane A. Lane
Stephen & Beverly Levin

Live Nation
Paul J. Marcotte &
Karen A. Brown
Edward & Roberta Martin
Jeanette & Richard Merion
Jack Miller Family
Foundation
Paul Mirabello
Drs. Jonni & Roger Moore
Cozen O'Connor
Parkway Corporation
Parx Casino
Ann & Lanny Patten
Robert & Terry Patterson

CUSHMAN SOCIETY, CONTINUED

| | | | |
|--------------------------------------|-------------------------------|------------------------------|--|
| Rev. Lucy Pierre | Siobhán Ruane | Mr. & Mrs. Richard T. Taylor | Volpe Family Charitable Fund |
| Dr. Joel & Mrs. Roberta Porter | Law Office of Jed Silversmith | Marlene & Joe Testa | Victoria Werth & Kevin Jon Williams |
| Rocco Pugliese | Rowland & Elaine Smith | Dr. & Mrs. Alan & Ede Twer | Ruth Anne & David Woolsey |
| Mr. & Mrs. Vincent Redes & Morgan | Richard Stafford | Vanguard Charitable | WSFS CARES Foundation |
| | Jesse W. & B. Lois Stuart | Marge & Rick Volpe | |

JEFFERSON SOCIETY (\$1,500+)

| | | | |
|---------------------------------------|--|-----------------------------------|----------------------------------|
| Joey Abramowicz & Jeff Coon | Larry & Nancy George | Calvin Mayo & Tanya Ruley-Mayo | John Shaffer |
| Susan Adamczyk | James & Wendy Gerber | Melanie Miller | Kathy & Don Shannon |
| Anonymous (3) | Katherine Glaser | Steven & Deborah Mongiarlo | Lee & Roy Shubert |
| Joseph & Barbara Bernert | Ron & Sandy Gould | Mario & Rosemarie Nicolais | Rita A. Silvestri |
| Bernert Family | Joe & Otti Hallinan | Nochumson P.C. | Dave & Chris Stanton |
| Dan Bosin Associates | Mr. & Mrs. John Hammer | Joseph & Janeen Ostaszewski | Dom Stellato |
| Dolores & Ronald Bowlan | Lynda & David Herendeen | Deborah Ott & Angel Macasieb | Ruth Stevens |
| Joseph & Suzanne Calabro | James Herman, Esq. & Brenda Lee Eutsler, Esq. | Mr. Jack & Hermene Potts | Sherry & Ted Strand |
| Edward Charlton & Grace Spampinato | Denise D. Hodgson | Wayne & Karen Ranbom | Mr. & Mrs. Donald C. Tantum |
| Kevin Chung | Tom & Paula Hollencamp | Juanita & Pete Ricchiuti | Jim & Irene Tholey |
| Connelly Foundation | Debra Jih & Noah Cook | Carl & Donna Robinson | Tompkins Insurance Agencies |
| Thomas Coyne | Richard & Gail Johnson | Mr. & Mrs. Robert K. Roush, Jr. | Lori & Robert Scott Uhl |
| Daiichi-Sankyo, Inc. | Thomas Kay | Joyce S. Sando | Stephanie Ward & Paul Merollo |
| William Faris | Leonard Kolins & Faye Goodman | Carl M. & Diane Schoenborn | Mr. & Mrs. Paris Washington |
| Anthony & Laura Fiorenza | Mary Kozar | Ellen Schwartz & Jeremy Siegel | Virginia Wentzel |
| The Fox Foundation | Ginny & Gordon Lapinski | Louie Scottoline | WipFli LLP |
| Michelle Franklin | Samuel P. Mandell Foundation | | Debbie & Ron Wolf |
| Jack & Ellie Garfinkle | | | |

KEMBLE SOCIETY (\$1,000+)

| | | | |
|--|---|---|--|
| The A Cappella Project Philadelphia | Mr. & Mrs. William P. & Susan P. Degler | Jewish Community Foundation, Inc. | Thomas P. Obade, MD |
| Matthew & Megan Abbott | Dolfinger-McMahon Foundation | Dr. & Mrs. Gerard Johnson | Hayler, Robbie & Meighan Osborn |
| Stuart & Marylee Alperin | Pat & Rick Dougherty | James T. Johnston, Sr. | Marcia & Don Pizer |
| Anonymous (2) | Dr. Charles & Mrs. Brenda Driben | Marcia & Ned Kaplin | Kevin A. Roach |
| Bank of America Matching Gifts | Robert J. Eberle Jr. | Art Kissel | The Robinson Family Foundation |
| Mrs. & Mr. Emma Beckers | Rick & Tammy Echevarria | Flora D. Koumatos | Susan & Bruce Rosenbam |
| Mr. Robert Bowen | Kathleen Evans | Joe & Andrea Leahy | Property Management Redefined/ John & Lauren Sacks |
| Jonathan Broh, JKRP Architects | Dustin Flay | Suzanne Lemley | Stephen M. Sader |
| Lee Brooks | Chris & Margie Giles | Christian R. & Mary F. Lindback Foundation | Michael A. Scully |
| Tracy A. Broomall | Joan & William Goldstein | Mike & Amy Long | Deborah Sesok-Pizzini |
| Paul, Kaye, & Scott Bunkin | Lizzie Gumula | Ms. Vanessa Mapson | Steven & Lynne Spencer |
| Jeffrey & Diane Bush | Judy DiGianni | Mr. & Mrs. Marchioli | Marilyn L. Steinbright |
| Mayor & Mrs. Edward Campbell | Tom & Rosemary Hampton | Marsh/Philbin Charitable Fund | Jason & Lisa Strand |
| Donna Carmody | Ms. Linda Harvey | Ms. Marsh & Mr. Philbin | Mr. & Mrs. Sylvan Taub |
| Edward & Dorothy Carter | Robert Hess & Frances Sherr | Andrew & Cheryl Masterman | Cathy & Frazier Van Velsor |
| George M. Chamberlain | Mr. Lee H. Hudson | Sandy McGee | Kate & Mickey Velez |
| Rodney & Meghan Comegys | Eric Huhn, from colleagues at NRG, in honor of years of dedication, support & kindness | Mr. Patrick & Paula McGinley | Verizon Matching Gifts |
| Sara & Chris Console | Jim & Carol Hunsicker | Don & Sue Miller | Richard Volpe |
| Mr. & Mrs. G. Sterling Coyne II | Jo Hyden | Patrick & Monica Moeller | Rachel & Brian Wilner |
| Tom & Sue Crop | | Carolyne Montgomery | Karen Zur & Robert Biron |
| Kim & Walt Cwietniewicz | | Ruth & Jerry Mooney | |
| Drs. Michael Dabrow & Manette Fine | | Kenneth Morton | |
| | | Peter & Kathryn Novak | |
| | | Christian & Noelle Noyes | |

PRODUCING ANGELS (\$500+)

| | | | | |
|--|--------------------------------|-------------------------------|------------------------------------|-----------------------------------|
| Gerry Abelson & June Idzal | Kathryn & Glenn Carlson | Sondra & Joel Haness | Mr. & Mrs. Michael E. Markovitz | The Rudnick Family |
| Dr. Randy Ackerman & Dr. Donna Churlin | Vincent Caruso | Christina Harman | Debbie & Elliott Maser | Mary & Paul Rutter |
| Actors' Equity Foundation | Stephen D. Cohen | Blair Harman | Patricia & Philip McAloon | Gail Scouffield |
| Edward & Roseann Adamczyk | Mr. & Mrs. Peter & Jane Cohen | BillyD Hart | Pat & Harold McIlwain | Maureen & Fred Selby |
| Brad Adams | Sherry & Daniel Cohen | Rev. William D. Hartman | Ms. Elynn McMullin | Michael & Shelley Shavel |
| George Ahern | Joann Coltman | Alicia & John Hlywak | Ms. Kyle Anne Midkiff | Robin Sherwood |
| Duane & Meena Amendola | Comcast Corporation | Mr. & Mrs. John R. Hogan | Frances Miller | Susan Smith |
| M. Faith Angell & Kenneth Carobus | Donald Crist | Bruce & Alice Hudson | Mr. Miller | Alanna Smith |
| Anonymous | Alli Curro | Robert & June Hudson | Maurice Mitts & Irene Lane | Mr. & Mrs. Joseph Somers |
| Rena & Sam Barnett | Helen M. Cyzio | Frank & Ginny Jackson | Rick Moog & Pat Martin | Dr. Roman & Mrs. Lynne Tatarowicz |
| Ms. Mary R. Barry | Donna & Bill Dalusio | Mr. Robert W. Jung | Morgan Stanley | Sarah G. & Marc D. Tischler |
| Carol Batman | Susan DiPaolo | Jacob Karabell | Karen & Mike Morgan | Michael P. Toner |
| Bruce C. Belzak | Reid & Phyllis Edwards | John & Barbara Kelly | Hermann & Barbara Moser | Susan & Robert Tribit |
| Barbara & Brian Binney | Dr. Beverly Emanuel | Mr. & Mrs. David Kelly | Milton J. Moser & Maryann S. Pzdan | Umbrecht Family A Fund |
| Scott Bishop | Blair & Kacie-Linn Engle | Gerhart & Anne Klein | Dr. & Mrs. Richard & Bonnie Moses | Joseph & Sandra Vasta |
| Amy Bohner | Jeffrey Ettinger & Ann White | Charitable Fund | Emma & Richard Nashner | Susan Vettori |
| Janet, Dan & Jacob Boris | Anne M. Farrington | Karen & Robert Landman | Mrs. Joan Palitz | Donna Visioli & Cesar Silebi |
| John & Linda Braceland | Joel & Carol Fleisher | Charles B. Landreth | Frank & Anne Palopoli | Walter Vogler |
| David & Janet Breskman | Glatfelter Insurance Group | Gerry & Heather Lee | Richard M. Parison, Jr. | Lew & Hella Volgenau |
| Donna Britt | Stephen Glaudel | Theodora Lengowski | Matthew Pettigrew | Weber Display & Packaging |
| Jim & Mary Brown | Ahuva Gleimer | John & Daniela Leone | Philadelphia Insurance Companies | Russ & Carol Whitman |
| Judy Brunner | The William Goldman Foundation | Linn One Hour Cleaners, Inc. | Stephen Rapp | Jim Zambon |
| Bob & Treva Burger | Arlene Goldberg | David Long | Deborah Rodia | |
| Yvonne M & Bruce H Burgess | Mr. & Mrs. John D. Graham | Richard & Kathleen Lowry | Sally & Edwin Rosenthal | |
| | Dr. Kenneth Hallahan | Michael Lynagh & Peg Mertz | | |
| | | Dr. & Mrs. Harry & Joy Manser | | |

BENEFACTORS (\$250+)

| | | | | |
|---------------------------------|-----------------------------|--|------------------------------------|------------------------------------|
| Charles Adams | Jeremi Conaway | Suzanne T. Heller | Elizabeth Meyer | Patrick & Donna Smith |
| Mary Beth & Aaron Adams | Hilary Condon | Connie L. Hewitt | Kim & Scott Meyer | Andrew Smith |
| Paul Anderson | Colleen Craighton | Mrs. Martene Hestand | Marina Meystel | Grant Smith |
| Scott Angelides | Lance Curley | IBM Corporation Matching Grants Program | Dave Miller | Maryrose Smochek |
| Stephen & Domenick Angilletta | Sophie & Robert D'Agostino | Dr. & Mrs. Geza Incze | Kathy & Lou Monticchio | Bonnie & Steven Snyder |
| Anonymous (3) | Mr. Louis D'Amico | Lynn Jordan | Ann M. Montagna | John & Christine Sommer |
| James W. Baker | Kathleen Dehaven | JPMC Foundation | Mrs. & Mr. Margaret & Mark Morgan | Gregory Stratoti |
| Ms. Deborah Barrington | Deborah A. Delp | Ms. Shirley Kalis | Megan Mueller | John & Rochelle Thompson |
| Davis | Ms. Marion McDevitt | Catharine Keim | Ms. Marleen Nadu | Wayne Tobolski |
| Dr. & Mrs. Kenneth J. Basalik | Jim DiCarlo | Thomas & Stephanie Kelly | Jeremy & Sandy Oliver | Richard & Anne Umbrecht |
| Walter Beard, Jr. | Kevin Dillon | Mr. & Mrs. John W. Kemble Jr. | Mr. & Mrs. Thomas & Elizabeth Pack | Warren Uzialko |
| Todd Levin & Andre Beckett | Gai W. Dillon | Alan & Henrietta Kiel | Jarred & Nushi Parrish | Sarah & John VanBuren |
| Ellen Berlinger | Richard Dobrowski | Mr. & Mrs. Robert Korn | Bob & Susan Peck | Richard Vanberg |
| Andrea Bowers | Reva Dubin | Patricia & George Kroclick | Dr. & Mrs. Bernard & Joy Pekala | Lewis Waber |
| Lisa S. Boyell | Claudia & John Dustin | Andrew & Julia Leader-Smith | L. Stephan & Rochelle Perchick | Mr. & Mrs. Robert & Lucinda Weiner |
| John Boylan | William Evans | Harry & Carol Leopold | Mr. Frank Pittner | Michelle Weinstock |
| Mr. Mark Branson | Sean Fahey | Rev. Elizabeth Lerch | Marc & Deena Platizky | Llew & Ginny Werley |
| Mr. & Mrs. Henry Brasteter, Jr. | Kellie & Mike Feehan | Devora Levinson | Nancy & Jon Pliskin | Mr. Leonard West |
| Thomas & Carol Brightman | Bruce Fine | Mr. & Mrs. Ted Lotz | Patricia H. Polinsky | Wayne & Paula Davis West |
| Carol E. Brown | Bill & Karen Fisher | Mr. & Mrs. James Love | Mr. & Mrs. Donald & Dorothy Prais | Mark Wheeler |
| Mr. Anthony Bruno | Bill Flannery Automotive | Alan & Kathleen Mackie | Mr. Prychka | Thomas Wholey |
| Marilyn R. Burgin | Dodi Fordham | Jill & Michael Magerman | Dr. & Mrs. Christopher Rapano | Ms. Ann J. Williams |
| Maria Cappello | Brandon Ford | Vivian & Allan L. Marmon | Deborah Rodenhouser | Daniel Wisniewski |
| David Carey | Don & Karen Fry | Wayne Marquardt & Chris Tadeo | Adam Rogers | David & Kathleen Wojcik |
| JoAnn & Ralph Carey | Anne Marie Gavin | Judith Martin | Roseann & David Sauer | Maureen & Joe Yanoshik |
| Natalie Caruso | Janis & Stephen Goodman | James & Patricia Mayhew | Rita Schiazza | Mary E. Zaccardi |
| Susan K. Casey | Ms. Barbara Grady | Margaret & Ken McGill | Lucinda Schwebel | Alice Zal |
| Ms. Nancy L. Cervino | Mary E. Graham | Patrick McGinty | Mr. & Mrs. Robert Shannon | Sandra Zarodnansky |
| Dr. & Mrs. Howard Cetel | William Greenberg | Mr. Thomas McGowan | Ira Siegal | Susan & Kevin B. Zebrowski |
| George & Dorothy Chmielewski | Eleanor Gribok | Dorothy McMullen | | |
| Chubb Corporate Giving | Douglas & Epiphany Grisbaum | Trina McSorley | | |
| Mary Anne & Nick Ciasullo | Ms. Laurie White Gumula | Kimberly Mehle | | |
| John Coggins | Magne Gundersen | mark mendenhall | | |
| Sharon & Kevin Coghlan | Linda Gussie | Rev. & Mrs. Raymond & Deborah Merriweather | | |
| | Helen M. Hall | | | |
| | Peter & Debra Ann Harrsch | | | |

PLATINUM STAR VOLUNTEERS

Recognizing our wonderful volunteers who have made contributions to Walnut Street Theatre, in addition to giving generously of their time!

| | | | | |
|-------------------------|----------------------|----------------------|--------------------------|-----------------|
| Laurie & Alyssa Altmark | Harriet K. Feinstein | David Hann | Isaak & Evonne Kruger | Barry Shapiro & |
| Cathanne Bart | Maryanne Giampapa | Mimi Hawn | Gale Raspen | Emma Burd |
| Randi Chud & Bob Frey | Blossom Gica | Jean & Larry Holbert | Sharon & Michael Richman | Lois Stick |
| Jim DiCarlo | Ms. Linda Hagarty | Brenda Hunsberger | | |

Contributions made to Walnut Street Theatre through July 1, 2024.

Additional supporters are gratefully acknowledged online at walnutstreettheatre.org/support/ways-to-give. Every effort has been made to ensure this is a complete list; if your name is listed incorrectly, please contact the Development Office at 215-574-3580.

POP REED LEGACY SOCIETY

The Pop Reed Legacy Society recognizes individuals who have made provisions for Walnut Street Theatre through a planned gift. Because of their commitment to keeping our flame eternal, we know that our legacy will burn bright for future generations of audiences, artists, and students alike.

| | | | | |
|------------------------------------|---|---|----------------------------------|--|
| Anastasius and Anastasia Bandy* | Jeremy Edgecliffe-Johnson Harold Farrey* | Bernard Havard & Judy Capuzzi Havard | Miranda Markart Joan Prewitt* | Mark D. Sylvester Thomas C Wiernicki* |
| Bruce Belzak | Rhoda & Louis Fryman | Ken & Nancy Hellendall | Kevin & Jane* Roach | |
| John J Burns* | Bruce & Terri Goldberg | George L James III | Dr. Harry Rosenthal | *Deceased |
| Joseph & Suzanne Calabro | John & Liz Gontarz | Don & Diane Kolodziejcki | Rebekah Sassi | List as of July 1, 2024 |
| George Chamberlain | Sylvia Green* | Carol Lange | Martin Spector | |
| Philip Drach* | Gary Grob* | Lloyd Lewis* | | |

CAPITAL CAMPAIGN: THE FUTURE LIVES HERE EXPANSION PROJECT

Walnut Street Theatre is humbled to thank the following donors of \$250+.

| | | | | |
|-----------------------------------|--|-----------------------------------|--|--------------------------|
| Anonymous (4) | Sean & Amy Fahey | The Otto Haas Charitable Trust | Philip & Marjorie Masters | Camryn J Schultheis |
| Arthur Murray | Dr. & Mrs. William G. Field | Guy Hackney | Michael & Deborah McKee | Kathy & Don Shannon |
| International, Inc. | The Fox Foundation, In Memory of Rex & Carol Fox | Gillian Herschman | David & Lyn Montgomery | Dick & Maria Shroy |
| Dave & Bill Bailey | Matt Garfield | Alicia & John Hlywak | Maria & Steve Needles | Adam & Christine Sigal |
| David S Blum & Mark B Woodland | Dr. & Mrs. Robert J. Geller | Mr. & Mrs. John R. Hogan | Lynn & Cherie Oakes | Jon C. & Karen P. Sirlin |
| George Boehm | Gail & Samuel Goldstein | Tom & Paula Hollencamp | Pennsylvania Lumbermens Mutual Insurance Company | Charles & Clarice Thum |
| Mr. & Mrs. Warren Brandies | Janis Goodman | In Memory of Jane Lydon | PNC Bank | Robert & Cheryl Traub |
| Mrs. Lee & Ellen Brooks | Mackenzi & Joshua Gross | Kappel | Scott & Sharon Rankin | Timothy & Leora Wile |
| Dr. & Mrs. David Capuzzi | Patrick & Shelly Guise | Kent Family | Earl & Felicia Rehmann | Richard Woosnam |
| Natalie Caruso | Ramona Gwynn | Alan & Henrietta Kiel | Dolly Beechman Schnall | |
| Dr. Todd & Wendy Cohen | | Carol & John Little | Keith Schneck | |
| Charles J. Denny | | Stephen E. Lore | | |

2024-2025 RENOVATION DONORS

Walnut Street Theatre is humbled to thank the following donors of \$250+.

| | | | | |
|---|--|-----------------------------|---|----------------------------|
| George J. Ahern | Gary & Marlene Dworkin | Denise D. Hodgson | Arthur P. & Marjorie L. Miller | Jim and Marlene Scully |
| Anonymous (2) | Beverly Emanuel | Tom & Paula Hollencamp | John W. Mills | Louis and Bessie Stein |
| The Arcadia Foundation | Jeff & Lyn Evans | Bruce & Alice Hudson | Mr. & Mrs. Francis J. Mirabello | Foundation Fund #2 |
| Mr. & Mrs. John Ash | Jeffrey & Jane J. Ferro | Mr. and Mr. Huphoefewicz | Richard A. Mitchell | Meryl Udell & Kelci |
| Robert Basile & Marie Mooney | Rosalie Folts In Memory of Ben Lipitz | Syde Hurdus Foundation | Steven & Deborah Mongiardo | Todd & Barbara Vanett |
| Melissa & Andrew Baumbach | Rhoda & Louis Fryman | Kathy & Dave Hychalk | Drs. Jonni & Roger Moore | Mr. & Mrs. Mickey Velez |
| Amy and Tom Bohner | Jack & Ellie Garfinkle | Linda Iacono | Margaret M. Morgan | Marge & Rick Volpe |
| Dolores & Ronald Bowlan | Ms. Michele M. Gendron | Johnson and Johnson | Daniel W. & Chieeng K. Pitchford | Ms. Maryann Ziemba |
| Drs. James Byers & Stephanie Chuipek | Helen M. Hall | Catharine Keim | Diana L. Racobaldo | |
| Dr. & Mrs. David Capuzzi | Tom & Rosemary Hampton | Erin and Brian Kent | Mr. Kevin A. Roach & Jane K. Emely-Roach | List as of August 13, 2024 |
| Olympia Colasante | Bob & Louise Harman | Walter Kissel | | |
| Sally & Tom Coultres | BillyD Hart | Mr. & Mrs. Ted Lotz | | |
| | Bernard Havard & Judy Capuzzi Havard | Linda Maser | | |
| | | Patricia and Phil McAloon | | |
| | | Dr. Donald McGuigan, D.D.S. | | |

SETH'S BIG FAT BROADWAY CRUISE

ROUNDTRIP • 7 NIGHTS • 5 PORTS

Join Sirius XM radio host and Broadway pianist/conductor **Seth Rudetsky** on an incredible cruise to Alaska and British Columbia! Guests aboard the *Celebrity Edge* will start their adventure embarking from **Seattle**, Washington, and tour the beauty and majesty of Alaska's **Ketchikan, Endicott Arm, Juneau, Skagway, Inside Passage, and Victoria, BC.**

While onboard, guests will participate in a myriad of exciting theatre-themed events and concerts. Stay in world-class accommodations including staterooms, villas and suites. Awaken

your senses with twenty-nine distinct restaurants, bars, and lounges within *Celebrity Edge*. Enjoy on-board amenities including a state-of-the-art spa, casino, and a shopping district curated with upscale brands and products. The Resort Deck also invites guests to have sweeping views, and enjoyment from the on-board Solarium, a rooftop garden, swimming pools, and more. All from the comfort of staying right on the ship.

From icebergs and whale watching to exclusive performances starring Broadway's best, this is a once-in-a-lifetime adventure. Welcome to Alaska!

STARRING



Lilli Cooper
Wicked,
Spring Awakening



Stephanie J. Block
Into The Woods,
The Cher Show



Sebastian Arcelus
Into The Woods,
Elf

ALASKA DAWES GLACIER

AUGUST 1-8, 2025

ONBOARD THE *CELEBRITY EDGE*



Your Celebrity Cruise with Seth includes Cruise Fare as well as Exclusive Entertainment including*:

- EXCLUSIVE Entertainment and Daily Activities
- On-board Meals and Classic Beverage Service
- Seth's *Big Fat Broadway* Radio Show
- Broadway Trivia with fabulous prizes
- Autograph Session with the Stars
- EXCLUSIVE Broadway Concerts
- Master Classes
- Group Dinners
- Broadway Bingo
- Perform WITH the Stars!



*Exclusive programming and events are subject to change and are not limited to the above items. Talent subject to change.



Illustration: Glen Hanson



For more information visit sethrudetsky.com

To Reserve Your Cabin or Suite call
PLAYBILL TRAVEL at **866455.6789**



inspiring
A LIFE OF BEAUTY



Wood-Mode designers bring your vision to life through creativity and years of product and technical training. For more than 75 years, Wood-Mode has been developing products and training that inspire our designers, so they can inspire you.

Wood-Mode[®]
FINE CUSTOM CABINETRY

Visit Wood-Mode.com to get inspired,
explore and learn more.

Wall & Walsh, Inc.
(610) 789-8530
wood-mode.com

8320 West Chester Pike
Upper Darby, PA 19082