

PLAYBILL®



WALNUT STREET THEATRE
PHILADELPHIA, PENNSYLVANIA



JERSEY BOYS

The story of Frankie Valli & The Four Seasons

NEVER LOSE YOUR EDGE

THE LEXUS RX





 **LEXUS**
EXPERIENCE AMAZING

Contents

OCTOBER 2024

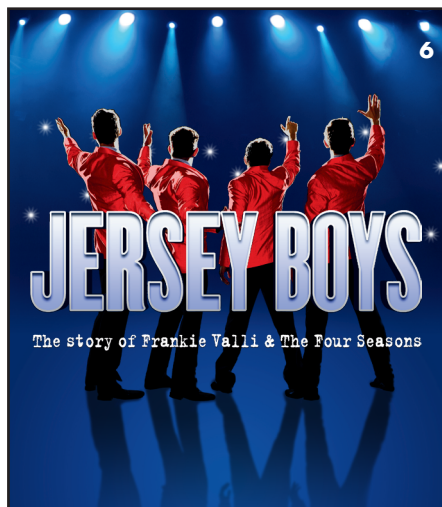
WELCOME 4

THE PROGRAM 6

Including Cast, Who's Who and Credits

HOW TO BUILD YOUR OWN PLAYBILLS 28

Introducing PLAYBILLder, a way to make authentic Playbills for local productions or personal events.



PLAYBILL®

President & CEO: Philip S. Birsh
Chief Financial Officer: Shamindra Jagnanan
Chief Operating Officer & VP: Alex Birsh
Director of Manufacturing: Robert Cusanelli
Executive Assistant to CEO and COO: Dalconerys Reyes

Editor-in-Chief: Diep Tran
Production Managers: Alex Near
Jenna Perrino
Prepress Manager: Seán Kenny
Prepress Specialist: Benjamin Hyacinthe
Associate Editor: Stephen Vratos
Art Director: Kesler Thibert
Creative Services Manager: Dean Greer
Managing News Editor: Logan Culwell-Block
Senior News Editor: Andrew Gans
New York Broadway Editors: Scott Hale
Khadijah Rentas
Program Editors: Amy Asch
David Porrello
Andrew Rubin

Publisher, West Coast Sales & Partnerships: Glenn Shaevitz
Vice President of Sales: Joshua Stone
Associate Publisher: Jolie Schaffzin
Head of Sales for Theatrical and Regional Markets: Nicholas Foster
Director, Restaurant Advertising: Clara Barragán
Advertising Sales Associate: Franchesca Reese
Sales Operations Manager: Joe Weinberg
Sales Assistant: Sabrina Rasizzi
Ticket Manager: Yadira Mitchell

Chief Technology Officer: Jon Goldman
Director of Digital Operations: Andrew Ku
Creative Director: Bryan Campione
Director of Events & Creative Strategy: Leonard Rodino
Digital Media Planner: Jennifer Marinelli
Social Media Manager: Jeffrey Vizcaino

Chairman: Philip S. Birsh
Editor in Chief Emeritus: Joan Alleman
Secretary/Treasurer: Shamindra Jagnanan

PHILADELPHIA ADVERTISING SALES
Michael Gagliardi
215-840-7628 | mgagliardi@playbill.com

ADVERTISING SALES
729 Seventh Avenue, 4th Floor
New York, New York 10019
(212) 557-5757

PLAYBILL® is published by PLAYBILL Incorporated, 729 Seventh Avenue, 4th Floor, New York, NY 10019. Copyright 2024 by PLAYBILL Incorporated. All Rights Reserved. PLAYBILL® is a Registered Trademark of PLAYBILL Incorporated.

PrEP

TAKE the
STAGE
WITH a
different
PrEP



LEARN WHAT'S
CHANGED AT

**RETHINK
YOUR
PrEP**
.com



Trademarks owned or licensed by ViiV Healthcare.
©2023 ViiV Healthcare or licensor.
HVUADVT230010 April 2023 Produced in USA.



AMERICA'S OLDEST THEATRE – PHILADELPHIA'S MOST POPULAR THEATRE COMPANY

WALNUT STREET THEATRE

825 WALNUT STREET • PHILADELPHIA, PA 19107

Dear Theatregoer,

Welcome back to the Walnut for our 216th season! I am thrilled and honored to be back for my 42nd season. In pursuit of continually enhancing your theatregoing experience, we have been hard at work all summer renovating the theatre – the largest renovation of its kind since 1999. As you explore the theatre spaces, we hope that you enjoy the upgrades we have crafted with you in mind.

I am elated to have you join us for the premiere of our 2024-25 season, featuring the spectacular **JERSEY BOYS**. Our talented artists have poured endless energy and care into bringing this story to the stage. We hope this performance captivates and inspires you to return for the entire season.

As the holiday season descends, our stage will welcome Buddy the Elf to spread holiday cheer the best way he knows how: by singing loud for all to hear! Give yourself and your family the gift of **ELF The Broadway Musical** and journey from the North Pole to New York City with Buddy as he embraces family, friendship, and his true self.

Continuing this celebration of unlikely friendships, with the New Year comes the arrival of **DRIVING MISS DAISY**, the Pulitzer Prize-winning story of an elderly Jewish widow and an African American chauffeur who forge a deep friendship amidst the onset of the Civil Rights Movement.

When spring is just around the corner, we will welcome Noël Coward's **HAY FEVER**, where misjudged liaisons, secret seductions, and scandalous revelations run riot at the most outrageous of all house parties.

Rounding out our season will be the sensational Broadway musical, **DREAMGIRLS**, inspired by Diana Ross and the Supremes, where stars rise and fall but dreams live forever! This dazzling production will bring you along for the rapid rise of a 1960s girl group into pop superstardom and will leave you dreaming big.

In addition to our unforgettable Mainstage Season, we are overjoyed to open our doors for The Theatre School at Walnut Street Theatre for our fall semester, welcoming students of all ages. I encourage anyone with a passion for life to peruse our class offerings. I am also pleased for the return of Walnut Street Theatre for Kids this season, bringing back our favorite Charles Dickens' **A CHRISTMAS CAROL** for the holidays, and the soaring musical adventure Disney's **ALADDIN JR.** in the spring.

For now, sit back and enjoy the music and the too-good-to-be true story of Frankie Valli and The Four Seasons with the Broadway musical phenomenon, **JERSEY BOYS**. We are beyond thrilled to welcome you to the theatre and look forward to seeing you again soon!

Sincerely,

Bernard Havard,
President and Producing Artistic Director



Photo: Mark Garvin

EXPERIENCE
THE GLOBAL
SENSATION
LIVE ON BROADWAY!



WRITTEN BY 2022 TONY AWARD® WINNERS
TOBY MARLOW & LUCY MOSS

ON BROADWAY

WASHINGTON, DC NOVEMBER 12 - DECEMBER 1

BOSTON, MA DECEMBER 3 - 29

ON TOUR ACROSS NORTH AMERICA

SIXONBROADWAY.COM





FOUNDED 1808

AMERICA'S OLDEST THEATRE – PHILADELPHIA'S MOST POPULAR THEATRE COMPANY

WALNUT STREET THEATRE

825 WALNUT STREET • PHILADELPHIA, PA 19107

BERNARD HAVARD

President and Producing Artistic Director

October 1–November 3, 2024

JERSEY BOYS

The Story of Frankie Valli & The Four Seasons

Book by
MARSHALL BRICKMAN
& **RICK ELICE**

Music by
BOB GAUDIO

Lyrics by
BOB CREWE

Original Broadway Stage Production by Dodger Theatricals (Michael David, Edward Strong, Rocco Landesman, Des McAnuff); Joseph J. Grano; Tamara and Kevin Kinsella; Pelican Group in association with Latitude Link Rick Steiner/Osher/Staton/Bell/Mayerson Group. World Premiere Produced by La Jolla Playhouse, La Jolla, CA Des McAnuff, Artistic Director & Steven B. Libman, Managing Director

Set Design
JOHN FARRELL

Costume Design
MARY FOLINO

Lighting Design
MATT DEMASCOLO

Sound Design
ED CHAPMAN

Wig & Makeup Design
CARISSA THORLAKSON

Director of
Production
SIOBHÁN RUANE

Stage Managers
ELIZABETH HAROIAN
MICHELE BEGLEY
ABBY STURGIS

Associate
Artistic Director
BRIAN KURTAS

Music and Vocal Direction by
CHRIS BURCHERI

Directed and Choreographed by
RICHARD STAFFORD



MARK D. SYLVESTER
Managing Director

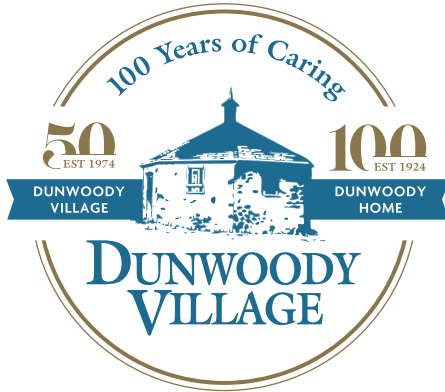
General
Manager
JESSICA DOHENY

Director of
Development
JEFF COON

Director of
Education
T.J. SOKSO

Director of Marketing
and Public Relations
STEPHEN RAPP

100 Years and Counting



(610) 359-4400 | www.dunwoody.org | 3500 West Chester Pike • Newtown Square, PA 19073
Independent Living • Rehabilitation • Personal Care • Skilled Nursing • Memory Support • Home Care



Pet Friendly

Proud Sponsor of Walnut Street Theatre

BEST
NURSING HOMES

US News

SKILLED-NURSING
REHABILITATION
2024

A Continuing Care Retirement Community | ★★★★★ Five-Star Rated Healthcare

Your Brand **Hand Delivered**
to Your Target Audience!

Contact us today
to reserve space in **PLAYBILL**.

Your Sales Representative:

Michael Gagliardi
mgagliardi@playbill.com
215.840.7628

PLAYBILL®

CAST

(in alphabetical order)

Frankie Valli	Will Stephan Connell*
Hank Majewski, Norm Waxman (and others)	Tommy Craig*
Joey (and others)	Joseph Cullinane*
Bob Crewe (and others)	Ryan Kleinman*
Francine (and others)	Kimberly Maxson*
Bob Gaudio	Eddie Olmo II*
Hal Miller (and others)	Dana Orange*
Gyp DeCarlo (and others)	Fran Prisco*
Mary Delgado (and others)	Kerri Rose*
Tommy DeVito	Ken Sandberg*
Lorraine (and others)	Audrey Biehl Simmons*
Nick Massi	Chris Stevens*

EXTRAS

ETHAN SHANE BROITMAN, JERROD GANESH

ASSOCIATE CHOREOGRAPHER/DANCE CAPTAIN

JOSEPH CULLINANE*

UNDERSTUDIES

ETHAN SHANE BROITMAN (Tommy DeVito) MEGAN CASTELLANE (Ensemble/Lorraine),
DYLAN COLLIE (Nick Massi), JACK FLYNN (Ensemble), JERROD GANESH (Ensemble),
HENRY GLEJZER (Bob Crewe), DERRICK JAQUES (Ensemble), BROOKELYN MOREHEAD
(Ensemble/Mary Delgado), CHRIS MORRIS (Gyp DeCarlo), ALEX MROCZKO (Ensemble/
Francine), SHANE ROCHE (Extra), ANDREW NATALE RUGGIERI (Frankie Valli),
JACOB SCHMIDEK (Bob Gaudio)

* The Actors and Stage Managers employed in this production are members of Actors' Equity Association, the theatre union of Professional Actors and Stage Managers in the United States.

The video or audio recording of this performance by any means is strictly prohibited.

Artwork by BWJ Enterprises LLC

JERSEY BOYS

is presented through special arrangement with
and all authorized performance materials are supplied by
Theatrical Rights Worldwide
1180 Avenue of the Americas, Suite 640,
New York, NY 10036.
www.theatricalrights.com



Education is personal

and CSFP is bringing hope, opportunity, and success to Philly Kids through scholarships.



FIND OUT HOW TO TURN YOUR PA TAXES INTO SCHOLARSHIPS FOR STUDENTS



HERMAN GOLDNER CO., INC.
MECHANICAL CONSTRUCTION & SERVICE

Since 1887

Call: 800-355-5997
For 24-Hour Emergency Service

Mechanical Construction
Plumbing Construction
Sanitary Process Piping
HVAC/Mechanical Service
Plumbing Service
Drain Cleaning/Camera Services
Building Automation Systems

7777 Brewster Ave
Philadelphia, PA 19153
(215) 365-5400 | (888) GOLDNER
goldner.com



PLAYBILL.com
Bring Playbill with you wherever you go.

MUSICAL NUMBERS

ACT I

“Ces Soirées-Là (Oh, What a Night) - Paris, 2000”	French Rap Star, Backup Group
“Silhouettes”	Tommy DeVito, Nick Massi, Nick DeVito, and Frankie Valli
“You’re the Apple of My Eye”	Tommy DeVito, Nick Massi, Nick DeVito, and Frankie Valli
“I Can’t Give You Anything But Love”	Frankie Valli
“Earth Angel”	Tommy DeVito and Full Company
“A Sunday Kind of Love”	Frankie Valli, Tommy DeVito, Nick Massi, and Nick’s Date
“My Mother’s Eyes”	Frankie Valli
“I Go Ape”	Frankie Valli, Tommy DeVito, Nick Massi, and Hank Majewski
“(Who Wears) Short Shorts”	The Royal Teens
“I’m in the Mood for Love” / “Moody’s Mood for Love”	Frankie Valli
“Cry for Me”	Bob Gaudio, Frankie Valli, Tommy DeVito, Nick Massi, and Joey
“An Angel Cried”	Hal Miller and the Rays
“I Still Care”	Miss Frankie Nolan and the Romans
“Trance”	Billy Dixon and the Tropix
“Sherry”	The Four Seasons
“Big Girls Don’t Cry”	The Four Seasons
“Walk Like a Man”	The Four Seasons
“December, 1963 (Oh, What a Night)”	Bob Gaudio and Full Company
“My Boyfriend’s Back”	The Angels
“My Eyes Adored You”	Frankie Valli, Mary Delgado, and The Four Seasons
“Dawn (Go Away)”	The Four Seasons
“Walk Like a Man” (Reprise)	Full Company

THERE WILL BE ONE 20-MINUTE INTERMISSION.

ACT II

“Big Man in Town”	The Four Seasons
“Beggin’”	The Four Seasons
“Stay”	Bob Gaudio, Frankie Valli, and Nick Massi
“Let’s Hang On (To What We’ve Got)”	Bob Gaudio, Frankie Valli
“Opus 17 (Don’t You Worry ’Bout Me)”	Bob Gaudio, Frankie Valli, and The New Seasons
“Bye Bye Baby”	Frankie Valli and The Four Seasons
“C’mon Marianne”	Frankie Valli and The Four Seasons
“Can’t Take My Eyes Off of You”	Frankie Valli
“Working My Way Back to You”	Frankie Valli and The Four Seasons
“Fallen Angel”	Frankie Valli
“Rag Doll”	The Four Seasons
“Who Loves You?”	The Four Seasons, Full Company

ORCHESTRA

Keyboard 3/Conductor (10/1 - 10/27): Chris Burcheri
Keyboard 1/Associate Conductor (10/1 - 10/27) & Keyboard 3/Conductor (10/29 - 11/3): Daniel Espie
Keyboard 1 (10/29 - 11/3): Jake Collins
Keyboard 2: Linda Henderson
Reed 1: Frank Mazzeo; Reed 2: Bob Quaile
Trumpet/Flugelhorn: Jim Ward
Guitar 1: Mike Quaile; Guitar 2: Tim Schilling
Bass: Fred Weiss; Drums: Kevin Blanke

LIFE, on a
Scale of You.




Foulkeways
AT GWYNEDD

Foulkeways, a Quaker Life Plan Community, is rich in harmony. Visit or call us today to create your own unique rhythm.



foulkeways.org | 215-283-7010 | 1120 Meetinghouse Rd, Gwynedd, PA

The Ultimate Playbill® Binder

PLAYBILL Binders and Sleeves display, organize, and protect your precious theatre keepsakes for years. The perfect gift for theatre fans everywhere!



PLAYBILL® STORE.com

CAST



**Will Stephan
Connell**



**Tommy
Craig**



**Joseph
Cullinane**



**Ryan
Kleinman**



**Kimberly
Maxson**



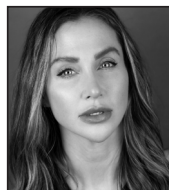
**Eddie
Olmo II**



**Dana
Orange**



**Fran
Prisco**



**Kerri
Rose**



**Ken
Sandberg**



**Audrey Biehl
Simmons**



**Chris
Stevens**

SETH'S BIG FAT BROADWAY CRUISE

Onboard the
Celebrity Apex

January 11–18, 2025

St. Kitts, British Virgin Islands, and
the Dominican Republic

Join SiriusXM Broadway
Host Seth Rudetsky



- **WATCH** Exclusive Shows with Broadway Stars!
- **SING** in Master Classes!
- **PERFORM** with the Stars!



STARRING



**LIZ
CALLAWAY**
Miss Saigon, Anastasia



**LESLIE RODRIGUEZ
KRITZER**
Spamalot, Beetejuice



**TONY
YAZBECK**
On the Town, A Chorus Line

* Talent Subject to Change

SUN AND SAND BY DAY, BROADWAY BELTING BY NIGHT!



For more information visit sethrudetsky.com

To Reserve Your Cabin call
PLAYBILL TRAVEL at 866.455.6789





Broadway IN THE GREEK ISLES

June 25—July 2, 2025
Onboard Ponant's *L'Austral*



VICTORIA CLARK
2x Tony Award® Winner



NIKKI M. JAMES
Tony Award® Winner



MATTHEW MORRISON
Tony® and Emmy Nominee



BONNIE MILLIGAN
Tony Award® Winner

More great Broadway talent to be announced!



Playbill Travel has fully chartered Ponant's luxurious *L'Austral* for our return to Greece. Following in the footsteps of our sold-out journey in 2019, we begin and end our trip in Athens, with stops in Patmos, Symi, Amorgos, Adamas, Milos, Delos, Mykonos and Hydra.

A cruise through the Greek Isles is the perfect chance to soak up the Mediterranean sunshine and ambiance, with a great balance of adventure and relaxation, especially for our culturally curious travelers.



As with each Playbill Travel cruise, you will be surrounded by fellow theatre-lovers as you enjoy nightly cabaret concerts from our dazzling roster of Broadway's brightest stars.

Join us for what promises to be one of the most beautiful and memorable Playbill Travel adventures ever.

For more information visit PLAYBILLTRAVEL.COM.

**To Reserve Your Cabin call
PLAYBILL TRAVEL at 866.455.6789**



WHO'S WHO

WILL STEPHAN CONNELL (*Frankie Valli*) could not be happier to play this dream role at the Walnut, where he was last seen as Bobby C in *Saturday Night Fever*. A University of Pennsylvania alum, he has performed across a number of stages, including Paper Mill Playhouse (*Fiddler on the Roof*), Fulton Theatre (*Spelling Bee*), Delaware Theatre Company (*Plaid Tidings*), and more. The deepest gratitude to Bernard, Mark, Brian, and the inimitable Richard for their trust and to the family onstage and off who have made this ride as meaningful as it is exhilarating. @awillandaway

TOMMY CRAIG (*Ensemble/Hank Majewski/Norm Waxman*) is thrilled to be back at the Walnut after covering the role of Donnie Kirschner in *Beautiful – The Carole King Musical* this spring. Some recent credits include: *Ghost the Musical* (Sam), *Rock of Ages* (Drew), and *Escape to Margaritaville* (Tully). Tommy is a South Jersey native that loves being with his two amazing daughters Noah Rae and Andi Grace when he's not performing.

JOSEPH CULLINANE (*Ensemble/Associate Choreographer/Dance Captain/Joey*) happily returns to WST after serving as Associate Choreographer for last season's *Beautiful – The Carole King Musical*. Off-Broadway: York Theatre, New World Stages, New York City Opera, Theatre Row. Tours: *Radio City Christmas Spectacular*; *Hello Dolly* with Sally Struthers. Regional: Paper Mill Playhouse, Pioneer Theatre, TUTS, North Carolina Theatre, Ogunquit Playhouse. Faculty: Joffrey Ballet School. Namaste to everyone at WST, the wonderful Richard Stafford, Corey and Trixie.

RYAN KLEINMAN (*Bob Crewe*) is thrilled to be returning to WST! Regional/Tour: *Beautiful – The Carole King Musical* (WST debut!); *Oklahoma!*; *South Pacific*; *The Wizard of Oz*; *The Secret Garden*; *Annie Get Your Gun*; Rodgers + Hammerstein's *Cinderella*; *In The Mood*; Disney's *Mary Poppins*; *Anything Goes*; *Peter Pan*. None of this is possible without the world's greatest wife and partner. Love you, Jessie! IG: @rykleinman, @thelikelyheroes

KIMBERLY MAXSON (*Ensemble/Francine*) Delighted and thankful to be back! Favorite credits: *Escape to Margaritaville*; *Shrek the Musical*; *Holiday Inn*; *Mamma Mia!*; *9 to 5* (WST); *Gypsy*; *Billy Elliot*; *Beehive*; *The '60s Musical*; *Hello, Dolly!* (Media Theatre); *Cabaret*; *The Producers* (BCCPA); Disney's *Mary Poppins* (OCTC); *Chicago* (Maples Rep). Love to my husband Ronnie and my family! @kimberly_maxson

EDDIE OLMO II (*Bob Gaudio*) Thrilled to return to WST after appearing as Barry Mann in *Beautiful – The Carole King Musical* last season! Broadway: *The Book of Mormon*. Touring: *The Book of Mormon*; *Elf The Broadway Musical*. Regional: Goodspeed; Walnut Street Theatre; North Carolina Theatre; Stages St. Louis; The REV; and others. Love to Mom, Dad, and Cierra. Thanks to Brian and HKA! For my wonderful wife, Lacey Kim. www.eddieolmo.com / @eddie_olmo

DANA ORANGE (*Ensemble/Hal Miller*) is happy to be back! WST: *Beautiful–The Carole King Musical* (Drifter), *Escape to Margaritaville* (Jamal), *Rocky, the Musical* (Apollo's Manager). Other Credits: *Disney's Mary Poppins* (Fireside Theatre), *Something Rotten!* (Florida Studio Theatre), *Kiss Me Kate* (Sacramento Music Circus). Thank you to Richard and the entire WST family! And much love to my wonderful support team! www.danaorange.com

FRAN PRISCO (*Gyp DeCarlo/Judge/Bowling Alley Owner/Al Finney/Priest*) #41! Most recent WST credits include: *Beautiful – The Carole King Musical* (Donny Kirshner); *Disney's Beauty & the Beast* (Cogsworth); Rodgers + Hammerstein's *Cinderella* (Sebastian); & *Rocky, the Musical* (Paulie). Favorites: *Dirty Rotten Scoundrels* (Andre); Rodgers + Hammerstein's *South Pacific* (Billis); *Sister Act* (Joey); & *The Music Man* (Marcellus). Many thanks to the Walnut Family! Love to Siobhán! For my dear friend Chris Farrell, he loved, "Oh, What a Night!"

KERRI ROSE (*Ensemble/Mary Delgado*) is thrilled to be back at the Walnut after performing in 16 previous productions at the theatre! BFA: University of the Arts. She is repped by DDO Artists Agency. Thank you to my husband, Josh, and son, Leo, for their endless love and support. For Lori.

KEN SANDBERG (*Tommy DeVito*) is delighted to be returning to WST! Previously seen in *Elvis: A Musical Revolution*. Recent credits include *Macbeth* (Quintessence Theatre) *Million Dollar Quartet* (The Media Theatre), *The Legend of Georgia McBride* (South Camden Theatre), and *Pride and Prejudice* (Greenbrier Valley Theatre). Ken co-hosts the weekly podcast *Campfire Classics* and is a proud member of AEA. "Thank you to the Pantera/Murphy Agency. And to Heather Michele Lawler, who makes every day a little better, I love you." @ken.sandberg

AUDREY BIEHL SIMMONS (*Ensemble/Lorraine*) (she/her) is grateful you are here supporting live theatre! Select Walnut Credits: *Beautiful – The Carole King Musical*; Rodgers + Hammerstein's *Cinderella*; *Disney's Beauty and*

WHO'S WHO

the Beast; *Young Frankenstein*; *Shrek the Musical*; *Legally Blonde*. Others include: Tuacahn Center for the Arts, Riverside Theatre, and 11 shows with Broadway at Music Circus. @audreysimmons

CHRIS STEVENS (*Nick Massi*) is thrilled to return to the Walnut after playing Gaston in last season's Disney's *Beauty and the Beast*. He is proud to reprise his performance as Nick Massi which he has previously played in the Off-Broadway and National Touring companies of *Jersey Boys*. National Tours: *Tina: The Tina Turner Musical*, *Waitress*, *Mamma Mia!*, *CATS*. Television: "Law & Order." Regional: *Shrek the Musical* (WST); *South Pacific* (WST); *Grease*; Disney's *Tarzan*; *Footloose*; and *The Sound of Music*. 2019 SALT Award Recipient for his portrayal of Buddy in *Elf the Musical* at Syracuse Stage. Endless thanks to my team at B.W.A. All my love and gratitude to Mom, Dad, Brett, Erin. "Family is everything." Insta: @CJStevens421

MARSHALL BRICKMAN (*Book*) Films (author or co-author): *Sleeper*; *Annie Hall*; *Manhattan*; *Manhattan Murder Mystery*; *For the Boys*; *Intersection*; (as writer/director): *Simon*; *Lovesick*; *The Manhattan Project*; *Sister Mary Explains it All*. Television: "The Tonight Show with Johnny Carson" (head writer), "The Dick Cavett Show" (head writer/co-producer). He has published in *The New York Times*, *The New Yorker*, *Playboy* and other periodicals and was the 2006 recipient or the Writers Guild or America's Ian McClellan Hunter Lifetime Achievement Award. *Jersey Boys*, his first venture into musical theatre, won four Tonys including Best Musical. *The Addams Family*, his second Broadway venture (with co-author Rick Elice), is currently playing on national and international tours. He lives in New York City and hopes to die in his sleep, surrounded by his loved ones and their attorneys.

RICK ELICE (*Book*) co-wrote *Jersey Boys* (winner 2006 Tony Award, 2007 Grammy Award and 2009 Olivier Award for Best Musical) with Marshall Brickman. His Play, *Peter and the Starcatcher*, received nine 2012 Tony Award nominations (including two for Rick) and won five, more than any play of the season. It's currently playing in New York and on tour across North America. Also on Broadway, Elice wrote *The Addams Family* (with Marshall Brickman, music and lyrics by Andrew Lippa), currently touring North America, with productions in Europe and South America. In 2014, the Old Globe Theatre in San Diego presented the world premiere of his new musical, *Dog and Pony* (music and lyrics by Michael Patrick Walker). Rick is currently writing a musical for Disney Theatricals with Benj Pasek and Justin Paul, based on the

film *Make Believe*, and *Super Fly* (co-written with Seth Zvi Rosenfeld), directed and choreographed by modern dance legend, Bill T. Jones. Heartfelt thanks to those whose work in the theatre makes him grateful for the day he was born: Sondheim, Stoppard, Bennett, Prince, Fosse, Robbins, Nichols, Tune, Nunn, Laments, Stone, Kushner, Taymor, Papp, Schumacher, Schneider, Coyne, Brickman, Timbers and Rees. Rick thinks about them a lot. He never thought about Jersey much. He does now.

BOB GAUDIO (*Composer*) wrote his first hit, "Who Wears Short Shorts," at 15, for the Royal Teens, and then went on to become a founding member of the Four Seasons and the band's principal songwriter. He also produced the hit "You Don't Bring Me Flowers" for Neil Diamond and Barbra Streisand (Grammy nomination, Record of the Year) as well as six albums for Diamond, including *The Jazz Singer*. Other producing credits include albums for Frank Sinatra, Marvin Gaye, Diana Ross, Michael Jackson and the soundtrack for the film *Little Shop of Horrors*. Several songs co-written with Bob Crewe have been cover hits for such artists as the Tremeloes ("Silence is Golden"), the Walker Brothers ("The Sun Ain't Gonna Shine Anymore") and Lauryn Hill ("Can't Take My Eyes Off You"). With his wife, Judy Parker, Gaudio produced and co-wrote the *Who Loves You* album for the Four Seasons and one of Billboard's longest-charted singles (54 weeks), "Oh, What a Night." A high point in his career came in 1990 when, as a member of the original Four Seasons, Gaudio was inducted into the Rock and Roll Hall of Fame. In 1995, he was inducted into the Songwriters Hall of Fame, which hailed him as "a quintessential music-maker." To this day, Bob Gaudio and Frankie Valli still maintain their partnership ... on a handshake.

BOB CREWE (*Lyricist*) "New York was pregnant in the fifties," says Bob Crewe, "gestating with possibilities." Crewe and music partner Frank Slay became independent writer-producers when the category hadn't yet been invented. In 1957 they wrote and produced "Silhouettes" for The Rays, which skyrocketed to #1. Suddenly, producers in demand, they launched Freddie Cannon's "Tallahassee Lassie" and Billy & Lillie's "Lah Dee Da." Crewe's 1960's unprecedented producing success with The Four Seasons birthed a new sound, striking a major chord in American pop. "Sherry," "Big Girls Don't Cry," "Walk Like a Man," "Candy Girl," "Ronnie" ~all smashes! When lead Frankie Valli demanded a solo turn, Crewe and Bob Gaudio wrote (and Crewe produced) "Can't Take My Eyes Off of You," which eventually became the century's fifth most-played

WHO'S WHO

song. Crewe ran hot with artists from Vicki Carr, Oliver and Lesly Gore to Mitch Ryder, co-writing with Charles Fox the soundtrack for Jane Fonda's film, "Barbarella." Then his own Bob Crewe Generation exploded with *Music to Watch Girls By*. In 1972, Bob was in L.A., where he revived Frankie Valli with "My Eyes Adored You" by Crewe and Kenny Nolan. They also co-wrote Patti LaBelle's "Lady Marmalade" (#1, July '75), which was a hit again on the soundtrack of *Moulin Rouge* (#1, June '01) ... David Ritz

RICHARD STAFFORD (*Director/Choreographer*) happily returns to the Walnut where he directed/choreographed *Beautiful—The Carol King Musical*; *Rocky, The Musical*; *Beehive*; *Legally Blonde*; *Mamma Mia!*; *Sister Act*; *Memphis*; *Curtains*; *Dirty Rotten Scoundrels*; Disney's *Beauty and the Beast* and *Cats*, and choreographed *La Vie En Blue*; *Evita*; *Camila*; *La Cage Aux Folles*; *Grand Hotel* and *The Goodbye Girl*. On Broadway, Mr. Stafford was the choreographer for *In My Life* (Music Box Theatre). New York City Opera: director/choreographer for *Los Elementos* (2017); *Pygmalion* (2018); Off-Broadway: choreographer for *A Tree Grows in Brooklyn* and director/choreographer for *Castle Walk*. richardstafford.net

CHRIS BURCHERI (*Music and Vocal Direction*) Previous Walnut credits include *Beautiful*, Disney's *Beauty and the Beast*; *Elvis – A Musical Revolution*; Rodgers + Hammerstein's *Cinderella*; and *Rocky, the Musical*. Also, recently at Broadway at Music Circus (*Cinderella*), Bucks County Playhouse (*Kinky Boots*), Villanova University, Rutgers-Camden, and Arcadia University. University of Pennsylvania graduate. Love to Maura, Mom, and Dad.

JOHN FARRELL (*Set Design*) He has collaborated with Mr. Stafford as a Scenic Designer since 1994, including many productions at The Walnut. John has been the Set and Illusion Designer for the *Magician Criss Angel* since 1993. Currently he is the Director of Production and resident Designer for New York City Opera since 2016.

MARY FOLINO (*Costume Design*) is currently Arcadia University's Costume Shop Manager and resident costume designer, having previously worked as the Walnut's Costume Shop Manager, and as the Costume Director of the Milwaukee Repertory Theater. Favorite WST designs include *Holiday Inn*; *Young Frankenstein*; *Rocky, the Musical*; Rodgers + Hammerstein's *Cinderella*; and Disney's *Beauty and the Beast*. Many thanks to Bernard and the WST family, all my collaborators on this piece, and the amazing costume and wardrobe staff!

MATT DEMASCOLO (*Lighting Design*) is thrilled to be working on this production of *Jersey Boys*. His past shows at the WST include *Beehive The 60's Musical*; *Always, Patsy Cline*; Rodgers + Hammerstein's *Cinderella*; *Escape to Margaritaville*, Disney's *Beauty and the Beast* and *Groucho: A Life in Revue*. For the last 18 years, Matt had been the Lighting Systems Manager at Production Express, Inc. but is now the Technical Supervisor here at the WST. His other theatrical work includes lighting productions at the Fulton Theatre and Maine State Music Theatre such as *Elf The Musical*; *Always, Patsy Cline*; *Million Dollar Quartet*; *Little Shop of Horrors* and *Grease*. His freelance lighting design work for local high schools includes shows like *West Side Story*, *Les Misérables*, *Hairspray*, and many more. He enjoys working with students in the educational environment and teaching young adults about theatre.

ED CHAPMAN (*Sound Design*) Happy to return for the 11th year at Walnut St. Broadway: *Leopoldstadt* (Associate Designer); *Ink* (2019 Tony-nomination Best Sound Design, Associate Designer) and *Travesties* (2018 Tony-nomination Best Sound Design, Associate Designer). Touring Productions: Disney's *The Little Mermaid*; *A Christmas Story*; *How the Grinch Stole Christmas*; *Guys and Dolls*; *The Producers*. Other award-nominated work: *Holiday Inn* (2018 SALT Award nomination), *Mamma Mia!* (2016 Berkshire Theatre Award nomination).

CARRISA THORLAKSON (*Wig and Makeup Designer*) is a freelance wig and makeup designer. You may have seen her recent work in Disney's *Beauty and the Beast*; *Beautiful—The Carole King Musical*; *Elvis – A Musical Revolution*; Rodgers + Hammerstein's *Cinderella*; *Rocky, the Musical* and more here at WST. She has also designed for New York City Center, The Old Globe, A.R.T., Paper Mill Playhouse, McCarter Theatre Center, Hartford Stage, Lookingglass Theatre Company, Two River Theatre, Bay Street Theater, Delaware Theatre Company, Olney Theatre Center, and The Princeton Festival. She has served as a wig and makeup artist across the country. Carissa also creates custom medical wigs, cosplay wigs, and teaches classes in wigs and makeup. Find her on Instagram as @wigician or see her work or rent wigs at CThorwigs.com.

ELIZABETH HAROIAN (*Stage Manager*) Thrilled to be back with WST for a fourth season! You'll see her work this season on *Jersey Boys*, *Driving Miss Daisy*, and *Dreamgirls*. Select stage management credits: WST: *Elvis: A Musical Revolution*; *Cat on a Hot Tin Roof*; Disney's *Beauty & the Beast*; *Rocky, the Musical*;

WHO'S WHO

Music Circus: *Waitress, 42nd Street; Basil Twist: Symphonie Fantastique*; ATC: *The Pirate La Dee Da*; NYU Steinhardt: *The Secret Garden; Sister Act*; Juilliard: *Richard III*. A few years ago, Liz was in Saudi Arabia managing a truly magical show with five international illusionists. She has worked with many academic programs including NYU Tisch, The Juilliard School, NYU Steinhardt, Atlantic, and ART/Harvard. Amid all the chaos, remember to have fun!

MICHELE BEGLEY (*Assistant Stage Manager*) is so excited to be returning to WST for her second professional season! She started out here as a Stage Management Apprentice for the main stage under Lori Aghazarian and Angela Cucco Jenkins in the 2017-2018 season. Last season, she had the pleasure to work on all five mainstage productions. Other regional credits include: Bristol Riverside Theatre, Theater at Monmouth, Penobscot Theatre Company, First Stage, and The Barnstormers Theatre. Special thanks to the cast, crew, apprentices, production, creative staff, Liz, and Abby who make this show possible. Proud member of AEA. Enjoy the show!

ABIGAIL STURGIS (*Assistant Stage Manager*) Happy to return to WST for another season! Select stage management credits: WST: *Groucho: A Life in Revue; Disney's Beauty and the Beast; Moana, Jr.*; Media Theatre: *Rent*; Quintessence Theatre Group: *Flyin' West; The Skin of Our Teeth*; Opera Philadelphia: *10 Days in a Madhouse*; Act II Playhouse: *A Couple of Swells; Really Good Tidings*. Proud graduate of Temple University. Love to Jon and Minnie.

SIOBHÁN RUANE (*Director of Production*) This is Siobhán's 12th season at WST. With over 20 years in the business, Siobhán has worked internationally as a Production Manager and Stage Manager. Previously, Siobhán held the faculty position of Stage Management Advisor at Florida State University's School of Theatre. Additional credits include Cirque du Soleil, Norwegian Cruise Line, Cirque Productions, and various regional theatres. Siobhán holds an undergraduate degree from Rutgers University, an MFA from the University of Delaware, and is (proudly!) originally from the Jersey Shore.

BRIAN KURTAS, CSA (*Associate Artistic Director*) has been associated with WST since 2007. He began his career here as a performer and in the professional apprenticeship program and has since dedicated himself to bringing artists together. He now serves our artists and audiences in the various capacities of casting, directing, programming, and literary management, as his

function is to identify the highest quality of artists for our historic theatre. His vision behind unforgettable live experiences and storytelling has become a creative solution from the stage to the screen - He spent 4 seasons as the Executive Producer of Gretna Theatre, has worked on television networks and films including TLC and HGTV, and helped create events and entertainment for brands such as Mobile and Walmart while at Live Nation. Originally from Lancaster, Brian is a proud Temple alum, a published playwright, and a member of the Casting Society of America.

MARK D. SYLVESTER (*Managing Director*) Mark is proud to be celebrating over three decades at America's Oldest Theatre. His extensive career has spanned Summer Stock to Broadway as an actor, stage manager, box office treasurer, theatre manager, marketing and public relations director and general manager. After several years working with commercial theatre, he has devoted his career to non-profit theatre companies since 1987. To date, Mark has been associated with more than 500 stage productions. An avid collector of musical theatre recordings, his collection contains over 3,500 cast albums from around the world. He has served on several boards including the National Alliance for Musical Theatre where he now holds the honorary position of Board Emeritus and the Advisory Committee of Samuel French, the international play publisher and licensing company. With Bernard Havard he co-authored the book *Walnut Street Theatre*.

BERNARD HAVARD (*President and Executive Producing/Artistic Director*) Vox Populi (The Voice of the People) was written on WST Playbills in the 1800s. Whenever WST has strayed from a populist program, the theatre has gone bankrupt. When I came here 42 years ago, we had no programs and no audience. Today we enjoy one of the largest subscription bases of any theatre in the world. So, my thanks to our loyal audience and a warm welcome to newcomers who enjoy and believe in what we do. I admire the artists who dedicated their lives to the theatre and WST, particularly. Our theatre is a non-profit 501-C3 institution, and we rely on contributed income to extend our reach into the community. Last season we reached more than 62,743 students in our city schools. We have 19 esteemed trustees who give their time, wisdom, and contributions to help guide this historical treasure. I came to WST in 1982, and I am as excited now about our future as I was in the beginning. My heartfelt thanks to all who enter this theatre. For my biography, go to About Us on our website at WalnutStreetTheatre.org

MUSIC CREDITS

“Ces Soirées-Là (“Oh, What a Night”) (Bob Gaudio, Judy Parker, Yannick Zolo, Edmond David Bacri), Jobete Music Company Inc., Seasons Music Company (ASCAP).

“Silhouettes” (Bob Crewe, Frank Slay, Jr.), Regent Music Corporation (BMI).

“You’re the Apple of My Eye” (Otis Blackwell), EMI Unart Catalog Inc. (BMI).

“I Can’t Give You Anything But Love” (Dorothy Fields, Jimmy McHugh), EMI April Music Inc., Aldi Music Company, Cotton Club Publishing (ASCAP).

“Earth Angel” (Jesse Belvin, Curtis Williams, Gaynel Hodge), Embassy Music Corporation (BMI).

“Sunday Kind of Love” (Barbara Belle, Anita Leanord Nye, Stan Rhodes, Louis Prima), LGL Music Inc./Larry Spier, Inc. (ASCAP).

“My Mother’s Eyes” (Abel Baer, L. Wolfe Gilbert), Abel Baer Music Company, EMI Feist Catalog Inc. (ASCAP).

“I Go Ape” (Bob Crewe, Frank Slay, Jr.), MPL Music Publishing Inc. (ASCAP).

“(Who Wears) Short Shorts” (Bob Gaudio, Bill Crandall, Tom Austin, Bill Dalton), EMI Longitude Music, Admiration Music Inc., Third Story Music Inc., and New Seasons Music (BMI).

“I’m in the Mood for Love” (Dorothy Fields, Jimmy McHugh), Famous Music Corporation (ASCAP).

“Moody’s Mood for Love” (James Moody, Dorothy Fields, Jimmy McHugh), Famous Music Corporation (ASCAP).

“Cry for Me” (Bob Gaudio), EMI Longitude Music, Seasons Four Music (BMI).

“An Angel Cried” (Bob Gaudio), EMI Longitude Music (BMI).

“I Still Care” (Bob Gaudio), Hearts Delight Music, Seasons Four Music (BMI).

“Trance” (Bob Gaudio), Hearts Delight Music, Seasons Four Music (BMI).

“Sherry” (Bob Gaudio), MPL Music Publishing Inc. (ASCAP).

“Big Girls Don’t Cry” (Bob Gaudio, Bob Crewe), MPL Music Publishing Inc. (ASCAP).

“Walk Like a Man” (Bob Crewe, Bob Gaudio), Gavadima Music, MPL Communications Inc. (ASCAP).

“December, 1963 (Oh, What a Night)” (Bob Gaudio, Judy Parker), Jobete Music Company Inc., Seasons Music Company (ASCAP).

“My Boyfriend’s Back” (Robert Feldman, Gerald Goldstein, Richard Gottehrer), EMI Blackwood Music Inc. (BMI).

“My Eyes Adored You” (Bob Crewe, Kenny Nolan), Jobete Music Company Inc., Kenny Nolan Publishing (ASCAP), Stone Diamond Music Corporation, Tannyboy Music (BMI).

“Dawn, Go Away” (Bob Gaudio, Sandy Linzer), EMI Full Keel Music, Gavadima Music, Stebojen Music Company (ASCAP).

“Big Man In Town” (Bob Gaudio), EMI Longitude Music (BMI), Gavadima Music (ASCAP).

“Beggin’” (Bob Gaudio, Peggy Farina), EMI Longitude Music, Seasons Four Music (BMI).

“Stay” (Maurice Williams), Cherio Corporation (BMI).

“Let’s Hang On (To What We’ve Got)” (Bob Crewe, Denny Randell, Sandy Linzer), EMI Longitude Music, Screen Gems-EMI Music Inc., Seasons Four Music (BMI).

“Opus 17 (Don’t You Worry ’Bout Me)” (Denny Randell, Sandy Linzer), Screen Gems-EMI Music Inc., Seasons Four Music (BMI).

“Everybody Knows My Name” (Bob Gaudio, Bob Crewe), EMI Longitude Music, Seasons Four Music (BMI).

“Bye Bye Baby” (Bob Crewe, Bob Gaudio), EMI Longitude Music, Seasons Four Music (BMI).

“C’mon Marianne” (L. Russell Brown, Ray Bloodworth), EMI Longitude Music and Seasons Four Music (BMI).

“Can’t Take My Eyes Off You” (Bob Gaudio, Bob Crewe), EMI Longitude Music, Seasons Four Music (BMI).

“Working My Way Back To You” (Denny Randell, Sandy Linzer), Screen Gems-EMI Music Inc., Seasons Four Music (BMI).

“Fallen Angel” Guy Fletcher, Doug Flett), Chrysalis Music (ASCAP).

“Rag Doll” (Bob Crewe, Bob Gaudio), EMI Longitude Music (BMI), Gavadima Music (ASCAP).

“Who Loves You?” (Bob Gaudio, Judy Parker), Jobete Music Company Inc., Seasons Music Company (ASCAP).

Explore the best hotel deals in New York City through **PLAYBILL!**

Booking your hotel through Playbill offers you the best pricing and amenities, including...



Food and Beverage Credit



Free Breakfast



Your Hotel Rewards Points



Waived Resort Fees



Early Check-in*
Late Check-out*



Room Upgrades*

*when available

PlaybillTravel.com/Hotels



PLAYBILL Partner Hotels

Get unbeatable value with exclusive benefits



BOARD OF TRUSTEES

President Bernard Havard
Chair Francis J. Mirabello, Esq.
Immediate Past Chair Scott Rankin
Chairman Emeritus Louis W. Fryman, Esq.
Chairman Emeritus Matthew Garfield
Chairman Emeritus John D. Graham
Vice Chair/Secretary Patrick Mullen
Treasurer Robert L. B. Harman

Jeffrey Ferro Tanya Ruley-Mayo
John Fidler Daniel J. Schuller
Jack R. Garfinkle, Esq. James D. Scully, Jr.
Melita J. Jordan Ellen Tobie
Audrey Merves Joseph Villani
Richard A. Mitchell, Esq. David Wyher

ALUMNI TRUSTEES

Ashok N. Bakhru, Bruce Belzak, George M. Chamberlain Jr.,
Thomas J. Coultres, Louis J. D'Ambrosio,
Joseph E. Ellis Sr., Barry Genkin, Terry Graboyes,
Ramona Gwynn, Denise Daher Hodgson (Chairwoman
Emeritus), Jeremy D. Johnson, Kenneth E. Kirby,
Theresa E. Loscalzo (Esq.), Craig R. MacQueen,
Kyle Anne Midkiff, Ann Marie Richter, Renee H. Rollin,
Keith D. Schneck, Martin W. Spector, James M. Tholey

HONORARY MEMBERS

Ms. Carole Haas Gravagno,
Hon. Mark Squilla, Ms. Lily Tomlin

WALNUT STREET THEATRE STAFF

ARTISTIC

President and Producing Artistic Director Bernard Havard
Associate Artistic Director Brian Kurtas

ADMINISTRATION

Managing Director Mark D. Sylvester
General Manager Jessica Doheny
Controller Michael S. Armento
Assistant to the Controller Sonja Stormes
Audience Services Manager Angelia Evans
Associate Audience Services Managers Aaron Bell,
Brendan Kennedy
Refreshment Service Manager Tony Houck
Facilities Manager Bruce Myers
Assistant to the Facilities Manager Tony Sample
Facility Services Airiell Foster,
Demetria Foster, Camielle Johnson, Jonathan Martin,
Ashura Merriweather, Marquis Miller,
Charles Phillip, Victoria Robinson

DEVELOPMENT

Director of Development Jeff Coon
Development Associate Billy D Hart
Development Associate Lizzie Gumula
Development Apprentice Zachary Sherry

EDUCATION

Director of Education T.J. Sokso
Associate Director of Education Amanda Pasquini
Education Programs Manager Maya Chester-Ziv
Education Apprentice Devon Duffy
Acting Apprentices Lindsey McCue, Briana Myers,
Isaac Ripley, Joey Williams
Teaching Artists Dave Allison, Julianna Babb,
Jordan Bailkin, Hallie Berger, Val Berger, Andrea Cardoni,
Hannah Catanoso, Elliot Davis, Walter Dodd,
Sharon Geller, Adam Hoyak, Annette Kaplafka,
Brian Kurtas, Lindsay Marcus, Kennedy McAlister,

MARKETING

Director of Marketing and Public Relations Stephen Rapp
Communications Manager Kelsey Sherlock
Marketing Associate Jennifer Epstein
Group Sales and
Ticketing Services Associate Rachel Scorpio
Marketing Apprentice Lindsay Goldschmidt
Box Office Treasurer Rick Dougherty
Assistant Box Office Treasurer Tom Brzozowski
Ticketing Services Manager Jeff Berry
Associate Ticketing Services Manager Luke Solacoff
Ticketing Services Apprentice Emily Fonash
Ticketing Services Agents Jason Boyer, Deon Davis,
Laura Frecon, Jerrod Ganesh, Richard Ginsberg,
Ja'Nell Hall-Ragin, Maya Holliday, Maryann Kuzan,
Christopher LeVere, Alexandra Lombardo, Leslie Monaco,
Irmak Sagir, Will Street, Courtney Taylor
Outbound Sales and Telefunding Ann Marie Borget,
Amanda Chiaro, Thomas Smith, Lauren Townsend

PRODUCTION

Director of Production Siobhán Ruane
Assistant Production Manager Megan Lampron
Production Technical Supervisor Matt DeMascolo
Production Administrator Jess Fowler
Production Apprentice Sophie Devereux
Stage Managers Elizabeth Haroian, Michele Begley,
Abigail Sturgis
Dance Captain Joseph Cullinane
Assistant Lighting Designer Jen Donsky
Stage Management Apprentice Jon Balagtas
Technical Director Brian Froomjian
Assistant Technical Director Eli Marsh
Technical Production Associate Tyler Bogie
TD/Shop Management Apprentice Caroline Herring
Head Carpenter Jon Wheeler
Carpenters Kerrin Frank, Stuart Bartlett, Carter Sinquefield
Carpentry Apprentices Maya Lebron, Carlos Sedano
Scenic Charge Leslie Curd
Scenic Artists Thomasin Parnes, Lauren Sellers
Scenic Apprentice Mo Lehmberg and Aria Smith
Properties Manager Shannon O'Brien
Prop Rental Coordinator Lindsey Silver
Head Properties Artisan Natalie Reichman
Properties Artisan Matthew Barth
Properties Apprentices Kelly Devlin, Blake Johnson,
Clare Wislar
Costume Shop Manager Natalia de la Torre
Assistant Costume Shop Manager Anya Loverdi
Draper and Costume Associate Chloe Swidler
Costume Apprentices Emily Marcus, Adriana Soto Ruiz
Drapers Melissa Drago, Morgan Porter, Anna Sorrentino
Stitchers Gretchen Ellis, Melissa Drago, Kayla Speedy
Lead Dresser Alison Levy
Wig and Make-Up Coordinator Claire Waid
Wig and Wardrobe Apprentice Madeline Segar
Costume Stock Coordinator Elizabeth McNamara

Stage Crew
Head Carpenter Mick Coughlan
Head Electrician Amber Faulhaber
Head Flyman David Cain
Head Sound Adam Orseck
Head Props Valerie Bannan
Seasonal Assistant Sound Ryan Erlichman
Seasonal Assistant Lighting Kathryn Morgan
Stage Crew Apprentice Elliot Cetinski



Actors' Equity Association (AEA), founded in 1913, represents more than 45,000 actors and stage managers in the United States. Equity seeks to advance, promote and foster the art of live theatre as an essential component of our society. Equity negotiates wages and working conditions, providing a wide range of benefits for its members, including health and pension plans. AEA is a member of the AFL-CIO, and is affiliated with FIA, an international organization of performing unions. The Equity emblem is our mark of excellence. actorsequity.org



UNITED SCENIC ARTISTS REPRESENTS DESIGNERS FOR THE AMERICAN THEATRE



MUSICIANS REPRESENTED BY THE AMERICAN FEDERATION OF MUSICIANS



BACKSTAGE EMPLOYEES AND SCENE SHOP EMPLOYEES ARE REPRESENTED BY THE INTERNATIONAL ALLIANCE OF THEATRICAL STAGE EMPLOYEES. (I.A.T.S.E.)



The Director-Choreographer is a member of the **STAGE DIRECTORS AND CHOREOGRAPHERS SOCIETY**, a national theatrical labor union.



The mission of the Walnut Street Theatre Company is to sustain the tradition of professional theatre and contribute to its future viability and vitality. It does so through the production and presentation of professional theatre; the encouragement, training, and development of artists; the development of diverse audiences; and the preservation and chronicling of its theatre building, a National Historic Landmark.



INDEPENDENCE STARTS HERE!

Walnut Street Theatre is a member of the Greater Philadelphia Cultural Alliance, Citizens for the Arts in Pennsylvania, and the league of Historic American Theatres. Walnut Street Theatre receives state arts funding support through a grant from the Pennsylvania Council on the Arts, a state agency funded by the Commonwealth of Pennsylvania.



Accessibility Equipment, Training and Marketing provided by Independence Starts Here, the statewide cultural accessibility program of VSA PA/Amaryllys Theatre Co., jointly led in different regions in PA by cultural partners in that region. In Greater Philadelphia, Independence Starts Here is jointly led by Art-Reach, Inc.



ART · REACH

Walnut Street Theatre receives additional season operating support from Actors Equity Foundation, Independence Foundation, and Theatre Forward.



Arts Alive Year 16: Walnut Street Theatre Turns the "DREAM" of Diverse Arts Participation into Reality.

COMING ATTRACTIONS AT THIS THEATRE!

MAINSTAGE

Our 2024–25 Season includes

- *Elf The Broadway Musical*
- *Driving Miss Daisy*
- Noël Coward's *Hay Fever*
- *Dreamgirls*

Buy a subscription or individual tickets at **215-574-3550**,

WalnutStreetTheatre.org
or Ticketmaster.com, 800-982-2787

WST FOR KIDS

- **Charles Dickens' *A Christmas Carol***
(December 6-21, 2024)
- **Disney's *Aladdin Jr.***
(April 26–May 11, 2025)

WALNUT STREET THEATRE SCHOOL

Contact us about our Fall Classes.
Call 215-574-3550, ext. 510
or register online at walnutstreettheatre.org

THANK YOU TO OUR GENEROUS SUPPORTERS!

Walnut Street Theatre wishes to express gratitude to the following individuals, corporations, foundations, and government agencies for their generous contributions in support of America's Oldest Theatre.

FORREST SOCIETY (\$25,000+)

Friends of Education	Syde Hurdus Foundation	PNC Arts Alive
Hamilton Family Charitable Trust	KPK Development Co, LP	Scott & Sharon Rankin
Bob & Louise Harman	Mr. & Mrs. Francis J. Mirabello	James & Marlene Scully
Bernard Havard & Judy Capuzzi Havard	The Neag Foundation	Louis & Bessie Stein Foundation
The Hearst Foundations, Inc.	PA Department of Community & Economic Development	Fund #2
The Hellendall Foundation	PECO	Joe & Kim Villani

BOOTH SOCIETY (\$10,000+)

Paul M. & Mary Lee Anderson	Dennis & Jennie Franklin	Richard A. Mitchell & Marna Carlton
C & N Bank	Fulton Bank	Pennsylvania Council on the Arts
CBIZ, Inc.	Matt Garfield	Pennsylvania Lumbermens Mutual Insurance Company
Delta Community Supports	Herman Goldner Company	Philadelphia Cultural Fund
Disney Worldwide Services	Horace W. Goldsmith Foundation	The Rimmel Foundation
Frances Emmons-Anastasi & Christopher Emmons	Huntington Bank	Mark D. Sylvester
Essential Utilities, Inc.	Independence Foundation	USLI
Jeff & Janie Ferro	Independence Blue Cross	David Wyher
Giunero Floro	Johnson Kendall & Johnson Inc.	
	Megawholesale, Inc.	

BARRYMORE SOCIETY (\$5,000+)

Abington Neurological Associates	Ferreira Law	William M King Charitable Foundation	Keith Schneck & Linda Chisholm
Anonymous	Rhoda & Louis Fryman	Philip & Margaret Masters	Roger & Kathi Smith
Arthur Murray's Rising Star World Foundation	Anne & Philip Glatfelter III Family Foundation	Dr. Sandra Mather	The Ethel Sergeant Clark Smith Memorial Fund
Drs. James Byers & Stephanie Chuipek	Patrick & Shelly Guise	Mr. & Mrs. Edward J. Mitchell	William R. Snell, Esq.
Sam Driban & Marilyn Shadis	The Haley Foundation	Maureen E. Molloy	Spark Therapeutics
Elliot's Vending Company, Inc.	Jerry & Kate Hathaway	Pat & Jacki Mullen	TD Charitable Foundation
	Jane M. James	The Payne Family Foundation	Universal Health Services
	Johnson & Johnson Family of Companies	Dr. Mitchell Rodman	Mr. Bruce White
		Royer Cooper Cohen Braunfeld LLC	

CUSHMAN SOCIETY (\$2,500+)

David Adelman	Timothy & Jane Duffy	Charles W. Horn, III & Patrick M. Rumaker	Live Nation
AIG	Drs. Bruce & Toby Eisenstein	Becky & Eric Hunt	Joseph & Peter Lomax
Anonymous	Ray & Ruth Fausak	Clara Huntzinger	Paul J. Marcotte & Karen A. Brown
Archer & Greiner	John Fidler	Kathy & Dave Hychalk	Edward & Roberta Martin
Dr. Sucha & Mr. Michael Asbell	Abel Garza	Intech Construction	Jeanette & Richard Merion
Baker Tilly US, LLP	The Hart Family	Justamere Foundation	Jack Miller Family Foundation
Dan & Reevea Benau	Bill & Cindy Hart	Kenneth & Elaine Kirby	Paul Mirabello
Jean Berg	Brandon Havard	Walter Kissel	Drs. Jonni & Roger Moore
Blank Rome LLP	Joslyn Hayes	Brian Kurtas & Jason Ketelsen	Cozen O'Connor
George & Nancy Brodie Fund	Kathryn S. Hayes & Victor J. Tortorelli	Ms. Abbie Lampe	Parkway Corporation
Nancy Brodie	Maureen & Robert Heckler	Jane A. Lane	Parx Casino
Bob & Chryl Carfagno	Gail Heinemeyer	Stephen & Beverly Levin	Ann & Lanny Patten
Joe & Wendy Casillo			
Vic & Eva Dawson			

CUSHMAN SOCIETY, CONTINUED

Robert & Terry Patterson	Siobhán Ruane	Marlene & Joe Testa	Victoria Werth &
Rev. Lucy Pierre	Law Office of Jed Silversmith	Dr. & Mrs. Alan & Edye Twer	Kevin Jon Williams
Dr. Joel & Mrs. Roberta Porter	Rowland & Elaine Smith	Vanguard Charitable	Ruth Anne & David Woolsey
Rocco Pugliese	Richard Stafford	Marge & Rick Volpe	WSFS CARES Foundation
Mr. & Mrs. Vincent Redes & Morgan	Jesse W. & B. Lois Stuart	Volpe Family Charitable Fund	
	Mr. & Mrs. Richard T. Taylor		

JEFFERSON SOCIETY (\$1,500+)

Joey Abramowicz & Jeff Coon	Larry & Nancy George	Calvin Mayo &	John Shaffer
Susan Adamczyk	Katherine Glaser	Tanya Ruley-Mayo	Kathy & Don Shannon
Anonymous (3)	Ron & Sandy Gould	Melanie Miller	Lee & Roy Shubert
Joseph & Barbara Bernert	Joe & Otti Hallinan	Steven & Deborah Mongiarlo	Rita A. Silvestri
Bernert Family	Mr. & Mrs. John Hammer	Mario & Rosemarie Nicolais	Dave & Chris Stanton
Dan Bosin Associates	Lynda & David Herendeen	Nochumson P.C.	Dom Stellato
Dolores & Ronald Bowlan	James Herman, Esq. &	Joseph & Janeen Ostaszewski	Ruth Stevens
Joseph & Suzanne Calabro	Brenda Lee Eutsler, Esq.	Deborah Ott & Angel Macasieb	Sherryl & Ted Strand
Edward Charlton &	Denise D. Hodgson	Mr. Jack & Hermene Potts	Mr. & Mrs. Donald C. Tantum
Grace Spampinato	Tom & Paula Hollencamp	Wayne & Karen Ranbom	Jim & Irene Tholey
Kevin Chung	Debra Jih & Noah Cook	Juanita & Pete Ricchiuti	Tompkins Insurance Agencies
Connelly Foundation	Richard & Gail Johnson	Carl & Donna Robinson	Lori & Robert Scott Uhl
Thomas Coyne	Thomas Kay	Mr. & Mrs. Robert K. Roush, Jr.	Stephanie Ward &
Daiichi-Sankyo, Inc.	Leonard Kolins &	Joyce S. Sando	Paul Merollo
William Faris	Faye Goodman	Carl M. & Diane Schoenborn	Mr. & Mrs. Paris Washington
Anthony & Laura Fiorenza	Mary Kozar	Ellen Schwartz &	Virginia Wentzel
The Fox Foundation	Ginny & Gordon Lapinski	Jeremy Siegel	WipFli LLP
Michelle Franklin	Samuel P. Mandell Foundation	Louie Scottoline	Debbie & Ron Wolf
Jack & Ellie Garfinkle			

KEMBLE SOCIETY (\$1,000+)

The A Cappella Project	Mr. & Mrs. William P. &	Dr. & Mrs. Gerard Johnson	Hayler, Robbie &
Philadelphia	Susan P. Degler	James T. Johnston, Sr.	Meighan Osborn
Matthew & Megan Abbott	Dolfinger-McMahon	Marcia & Ned Kaplin	Marcia & Don Pizer
Stuart & Marylee Alperin	Foundation	Art Kissel	Kevin A. Roach
Anonymous (2)	Pat & Rick Dougherty	Flora D. Koumatos	The Robinson Family
Bank of America	Robert J. Eberle Jr.	Suzanne Lemley	Foundation
Matching Gifts	Rick & Tammy Echevarria	Christian R. & Mary F.	Susan & Bruce Rosenbom
Mrs. & Mr. Emma Beckers	Kathleen Evans	Lindback Foundation	Property Management
Mr. Robert Bowen	Dustin Flay	Mike & Amy Long	Redefined/ John & Lauren Sacks
Jonathan Broh,	Chris & Margie Giles	Ms. Vanessa Mapson	Stephen M. Sader
JKRP Architects	Joan & William Goldstein	Mr. & Mrs. Marchioli	Michael A. Scully
Lee Brooks	Lizzie Gumula	Marsh/Philbin Charitable Fund	Deborah Sesok-Pizzini
Tracy A. Broomall	Judy DiGianni	Ms. Marsh & Mr. Philbin	Steven & Lynne Spencer
Jeffrey & Diane Bush	Ms. Linda Harvey	Andrew & Cheryl Masterman	Marilyn L. Steinbright
Mayor & Mrs. Edward Campbell	Robert Hess & Frances Sherr	Sandy McGee	Jason & Lisa Strand
Donna Carmody	Mr. Lee H. Hudson	Mr. Patrick & Paula McGinley	Mr. & Mrs. Sylvan Taub
Edward & Dorothy Carter	Eric Huhn, from colleagues	Don & Sue Miller	Cathy & Frazier Van Velsor
George M. Chamberlain	at NRG, in honor of years	Patrick & Monica Moeller	Kate & Mickey Velez
Rodney & Meghan Comegys	of dedication, support &	Carolyn Montgomery	Verizon Matching Gifts
Sara & Chris Console	kindness	Ruth & Jerry Mooney	Richard Volpe
Mr. & Mrs. G. Sterling Coyne II	Jim & Carol Hunsicker	Kenneth Morton	Rachel & Brian Wilner
Tom & Sue Crop	Jo Hyden	Peter & Kathryn Novak	Karen Zur & Robert Biron
Kim & Walt Cwietniewicz	Jewish Community	Christian & Noelle Noyes	
Drs. Michael Dabrow &	Foundation, Inc.	Thomas P. Obade, MD	
Manette Fine			

PRODUCING ANGELS (\$500+)

Gerry Abelson & June Idzal	Yvonne M & Bruce H Burgess	The William Goldman Foundation	David Long	Philadelphia Insurance Companies
Dr. Randy Ackerman & Dr. Donna Churlin	Kathryn & Glenn Carlson	Arlene Goldberg	Richard & Kathleen Lowry	Stephen Rapp
Actors' Equity Foundation	Vincent Caruso	Mr. & Mrs. John D. Graham	Michael Lynagh & Peg Mertz	Deborah Rodia
Edward & Roseann Adamczyk	Stephen D. Cohen	Dr. Kenneth Hallahan	Dr. & Mrs. Harry & Joy Manser	Sally & Edwin Rosenthal
Brad Adams	Mr. & Mrs. Peter & Jane Cohen	Sondra & Joel Haness	Mr. & Mrs. Michael E. Markovitz	The Rudnick Family
George Ahern	Sherri & Daniel Cohen	Christina Harman	Debbie & Elliott Maser	Mary & Paul Rutter
Duane & Meena Amendola	Joann Coltman	Blair Harman	Patricia & Philip McAloon	Gail Scoufield
M. Faith Angell & Kenneth Carobus	Comcast Corporation	BillyD Hart	Pat & Harold McAlwin	Maureen & Fred Selby
Anonymous	Donald Crist	Rev. William D. Hartman	Ms. Elyn McMullin	Michael & Shelley Shavel
Rena & Sam Barnett	Alli Curro	Alicia & John Hlywak	Ms. Kyle Anne Midkiff	Robin Sherwood
Ms. Mary R. Barry	Helen M. Cyzio	Mr. & Mrs. John R. Hogan	Frances Miller	Susan Smith
Carol Batman	Donna & Bill Dalusio	Tom & Joyce Howley	Mary Miller	Alanna Smith
Bruce C. Belzak	Susan DiPaolo	Bruce & Alice Hudson	Mary Mitts & Irene Lane	Mr. & Mrs. Joseph Somers
Barbara & Brian Binney	Dr. Charles & Mrs. Brenda Driben	Robert & June Hudson	Rick Moog & Pat Martin	Dr. Roman & Mrs. Lynne Tatarowicz
Scott Bishop	Reid & Phyllis Edwards	Frank & Ginny Jackson	Morgan Stanley	Sarah G. & Marc D. Tischler
Amy Bohner	Dr. Beverly Emanuel	Mr. Robert W. Jung	Karen & Mike Morgan	Michael P. Toner
Janet, Dan & Jacob Boris	Blair & Kacie-Linn Engle	Jacob Karabell	Hermann & Barbara Moser	Susan & Robert Tribit
John & Linda Braceland	Jeffrey Ettinger & Ann White	John & Barbara Kelly	Milton J. Moser & Maryann S. Pazardan	Umbrecht Family A Fund
David & Janet Breskman	Anne M. Farrington	Mr. & Mrs. David Kelly	Dr. & Mrs. Richard & Bonnie Moses	Joseph & Sandra Vasta
Donna Britt	Joel & Carol Fleisher	Gerhart & Anne Klein	Emma & Richard Nashner	Susan Vettori
Jim & Mary Brown	Glatfelter Insurance Group	Charitable Fund	Mr. Joan Palitz	Donna Visioli & Cesar Silebi
Judy Brunner	Stephen Glaudel	Karen & Robert Landman	Frank & Anne Palopoli	Walter Vogler
Paul, Kaye, & Scott Bunkin	Ahuva Gleimer	Charles B. Landreth	Richard M. Parison, Jr.	LeW & Hella Volgenau
Bob & Treva Burger		Gerry & Heather Lee	Matthew Pettigrew	Weber Display & Packaging
		Theodora Lengowski		Russ & Carol Whitman
		John & Daniela Leone		Jim Zambon
		Linn One Hour Cleaners, Inc.		

BENEFACTORS (\$250+)

Charles Adams	Jeremi Conaway	Peter & Debra Ann Harrsch	Rev. & Mrs. Raymond & Deborah Merriveather	Mr. & Mrs. Robert Shannon
Mary Beth & Aaron Adams	Hilary Condon	Suzanne T. Heller	Elizabeth Meyer	Ira Siegal
Paul Anderson	Colleen Craighton	Connie L. Hewitt	Kim & Scott Meyer	Patrick & Donna Smith
Scott Angelides	Lance Curley	Ms. Martene Hinstead	Marina Meystel	Andrew Smith
Stephen & Domenick Angilletta	Sophie & Robert D'Agostino	IBM Corporation Matching Grants Program	Dave Miller	Grant Smith
Anonymous (3)	Mr. Louis D'Amico	Dr. & Mrs. Geza Incze	Kathy & Lou Monticchio	Maryrose Smoczek
James W. Baker	Kathleen Dehaven	Lynn Jordan	Ann M. Montagna	Bonnie & Steven Snyder
Ms. Deborah Barrington	Deborah A. Delp	JPMC Foundation	Ms. & Mr. Margaret & Mark Morgan	John & Christine Sommer
Davis	Ms. Marion McDevitt	Ms. Shirley Kalis	Megan Mueller	Gregory Stratoti
Dr. & Mrs. Kenneth J. Basalik	Jim DiCarlo	Catharine Keim	Ms. Marleen Nadu	John & Rochelle Thompson
Walter Beard, Jr.	Kevin Dillon	Thomas & Stephanie Kelly	Jeremy & Sandy Oliver	Wayne Tobolski
Todd Levin & Andre Beckett	Gail W. Dillon	Mr. & Mrs. John W. Kemble Jr.	Mr. & Mrs. Thomas & Elizabeth Pack	Richard & Anne Umbrecht
Elen Berlinger	Richard Dobrowski	Alan & Henrietta Kiel	Jarred & Nushi Parrish	Warren Uzialko
Andrea Bowers	Reva Dubin	Mr. & Mrs. Robert Korn	Bob & Susan Peck	Sarah & John VanBuren
Lisa S. Boyell	Claudia & John Dustin	Patricia & George Kroculich	Dr. & Mrs. Bernard & Joy Pekala	Richard Vanberg
John Boylan	William Evans	Andrew & Julia Leader-Smith	L. Stephan & Rochelle Perchick	Lewis Waber
Mr. Mark Branson	Sean Fahey	Joe & Andrea Leahy	Mr. & Mrs. Steven B. Pinsky	Margot Waitz & Gordon Manin
Mr. & Mrs. Henry Brasteter, Jr.	Kellie & Mike Feehan	Harry & Carol Leopold	Susan Pitcher	Jeff Walsh & Mark Klingensmith
Thomas & Carol Brightman	Bruce Fine	Rev. Elizabeth Lerch	Mr. Frank Pittner	Kim Wassinger
Carol E. Brown	Bill & Karen Fisher	Devara Levinson	Marc & Deena Platziky	Mr. & Mrs. Robert & Lucinda Weiner
Mr. Anthony Bruno	Bill Flannery Automotive	Mr. & Mrs. Ted Lotz	Nancy & Jon Pliskin	Michelle Weinstock
Marilyn R. Burgin	Dodi Fordham	Mr. & Mrs. James Love	Patricia H. Polinsky	Llew & Ginny Werley
Maria Cappello	Brandon Ford	Alan & Kathleen Mackie	Mr. & Mrs. Donald & Dorothy Prais	Mr. Leonard West
David Carey	Don & Karen Fry	Jill & Michael Magerman	Deborah Rodenhouse	Wayne & Paula Davis West
JoAnn & Ralph Carey	Anne Marie Gavin	Vivien & Allan L. Marmon	Adam Rogers	Mark Wheeler
Natalie Caruso	Janis & Stephen Goodman	Wayne Marquardt & Chris Tadeo	Roseann & David Sauer	Thomas Wholey
Susan K. Casey	Ms. Barbara Grady	Judith Martin	Rita Schiazza	Ms. Ann J. Williams
Ms. Nancy L. Cervino	Mary E. Graham	James & Patricia Mayhew	Dr. & Mrs. Christopher Rapuano	Daniel Wisniewski
Dr. & Mrs. Howard Cetel	William Greenberg	Margaret & Ken McGill	Deborah Rodenhouse	David & Kathleen Wojcik
George & Dorothy Chmielewski	Eleanor Gribok	Patrick McGinty	Adam Rogers	Maureen & Joe Yanoshik
Chubb Corporate Giving	Douglas & Epiphany Grisbaum	Mr. Thomas McGowan	Roseann & David Sauer	Mary E. Zaccardi
Mary Anne & Nick Ciasullo	Mrs. Laurie White Gumula	Dorothy McMullen	Rita Schiazza	Sandra Zarodnansky
John Coggins	Magne Gundersen	Trina McSorley	Lucinda Schwebel	Susan & Kevin B. Zebrowski
Sharon & Kevin Coghlan	Linda Gussie	Kimberly Mehle		
	Helen M. Hall	mark mendenhall		
	Tom & Rosemary Hampton			

PLATINUM STAR VOLUNTEERS

Recognizing our wonderful volunteers who have made contributions to Walnut Street Theatre, in addition to giving generously of their time!

Laurie & Alyssa Altmark	Harriet K. Feinstein	David Hann	Isaak & Evonne Kruger	Barry Shapiro & Cathanne Bart
Maryanne Giampapa	Mimi Hawn	Gale Raspen	Sharon & Michael Richman	Emma Burd
Randi Chud & Bob Frey	Blossom Gica	Jean & Larry Holbert	Lois Stick	
Jim DiCarlo	Ms. Linda Hagarty	Brenda Hunsberger		

Contributions made to Walnut Street Theatre through July 1, 2024.

Additional supporters are gratefully acknowledged online at walnutstreettheatre.org/support/ways-to-give. Every effort has been made to ensure this is a complete list; if your name is listed incorrectly, please contact the Development Office at 215-574-3580.

POP REED LEGACY SOCIETY

The Pop Reed Legacy Society recognizes individuals who have made provisions for Walnut Street Theatre through a planned gift. Because of their commitment to keeping our flame eternal, we know that our legacy will burn bright for future generations of audiences, artists, and students alike.

Anastasius and Anastasia Bandy*	Jeremy Edgecliffe-Johnson	Bernard Havard & Harold Farrey*	Miranda Markart	Mark D. Sylvester
Bruce Belzak	Rhoda & Louis Fryman	Judy Capuzzi Havard	Joan Previtt*	Thomas C Wiernicki*
John J Burns*	Bruce & Terri Goldberg	Ken & Nancy Hellendall	Kevin & Kevin* Roach	
Joseph & Suzanne Calabro	John & Liz Gontarz	George J. Lames III	Dr. Harry Rosenthal	<i>*Deceased</i>
George Chamberlain	John & Liz Gontarz	Don & Diane Kolodziejski	Rebekah Sassi	<i>List as of July 1, 2024</i>
Philip Drach*	Sylvia Green*	Carol Lange	Martin Spector	
	Gary Grob*	Lloyd Lewis*		

CAPITAL CAMPAIGN: THE FUTURE LIVES HERE EXPANSION PROJECT

Walnut Street Theatre is humbled to thank the following donors of \$250+.

George J. Ahern	Sally & Tom Coulttes	Helen M. Hall	Debbie & Elliot Maser	Phillip & Diana Racobaldo
Anonymous (6)	Charles J. Denny	Tom & Rosemary Hampton	Philip & Marjorie Masters	Scott & Sharon Rankin
The Arcadia Foundation	Gary & Marlene Dworkin	Bob & Louise Harman	Patricia & Philip McAloon	Earl & Felicia Rehmann
Arthur Murray	Beverly S Emanuel	BillyD Hart	Dr. Donald McGuigan, D.D.S.	Kevin A. Roach & Jane K. Emely-Roach
International, Inc.	Jeff & Lyn Evans	Bernard Havard & Judy Capuzzi Havard	Michael & Deborah McKe	Dolly Beechman Schnall
Mr. & Mrs. John Ash	Sean & Amy Fahey	Gillian Herschman	Arthur P. & Marjorie L. Miller	Keith Schneck
Dave & Bill Bailey	Jeff & Lynn Ferro	Alicia & John Hlywyak	John W. Mills	Camryn J Schultheis
Robert Basile & Marie Mooney	Dr. & Mrs. William G. Field	Denise D. Hodgson	Mr. & Mrs. Francis J. Mirabello	Kathy & Don Shannon
Andrew & Melissa Baumbach	The Fox Foundation, In Memory of Rex & Carol Fox	Mr. & Mrs. John R. Hogan	Richard A. Mitchell	Dick & Maria Shroy
David S Blum & Mark B Woodland	Rhoda & Louis Fryman	Tom & Paula Hollencamp	Steven & Deborah Mongiardo	Adam & Christine Sigal
George Boehm	Matt Garfield	Bruce & Alice Hudson	David & Lyn Montgomery	Jon C. & Karen P. Sirlin
Tom & Amy Bohner	Jack & Ellie Garfinkle	Mr. & Mrs. Huphoeflewicz	Drs. Jonni & Roger Moore	Louis and Bessie Stein
Dolores & Ronald Bowlan	Dr. & Mrs. Robert J. Geller	Syde Hurdus Foundation	Mrs. and Mr. Margaret & Mark Morgan	Foundation Fund #2
Mr. & Mrs. Warren Brandies	Michele M. Gendron	Kathy & Dave Hychalk	Maria & Steve Needles	Charles & Clarice Thum
Drs. Lee & Ellen Brooks	Gail & Samuel Goldstein	In Memory of Jane Lydon	Lynn & Cherie Oakes	Robert & Cheryl Traub
Drs. James Byers & Stephanie Chuipek	Janis Goodman	Kappel	Pennsylvania Lumbermens Mutual Insurance Company	Meryl Udell & Kelci
Dr. & Mrs. David Capuzzi	Mackenzie & Joshua Gross	Catharine Keim	Daniel W. & Chieeng K. Pitchford	Todd & Barbara Vanett
Natalie Caruso	Patrick & Shelly Guise	Kent Family	PNC Bank	Mr. & Mrs. Mickey Velez
Dr. Todd & Wendy Cohen	Ramona Gwynn	Alan & Henrietta Kiel		Margaret & Rick Volpe
Olympia Colasante	The Otto Haas Charitable Trust	Walter Kissel		Timothy & Leora Wile
	Guy Hackney	Carol & John Little		Richard Woosnam
		Stephen E. Lore		Maryann Ziemba
		Mr. & Mrs. Ted Lotz		

2024-2025 RENOVATION DONORS

Walnut Street Theatre is humbled to thank the following donors of \$250+

George J. Ahern	Gary & Marlene Dworkin	Denise D. Hodgson	Arthur P. & Marjorie L. Miller	Jim & Marlene Scully
Anonymous (2)	Beverly Emanuel	Tom & Paula Hollencamp	John W. Mills	Louis and Bessie Stein
The Arcadia Foundation	Jeff & Lyn Evans	Bruce & Alice Hudson	Mr. & Mrs. Francis J. Mirabello	Foundation Fund #2
Mr. & Mrs. John Ash	Jeffrey & Jane J. Ferro	Mr. & Mrs. Huphoeflewicz	Richard A. Mitchell	Meryl Udell & Kelci
Robert Basile & Marie Mooney	Rosalie Folts In Memory of Ben Lipitz	Syde Hurdus Foundation	Steven & Deborah Mongiardo	Todd & Barbara Vanett
Melissa & Andrew Baumbach	Rhoda & Louis Fryman	Kathy & Dave Hychalk	Drs. Jonni & Roger Moore	Mr. & Mrs. Mickey Velez
Amy and Tom Bohner	Jack & Ellie Garfinkle	Linda Iacono	Margaret M. Morgan	Marge & Rick Volpe
Dolores & Ronald Bowlan	Ms. Michele M. Gendron	Johnson and Johnson	Daniel W. & Chieeng K. Pitchford	Ms. Maryann Ziemba
Drs. James Byers & Stephanie Chuipek	Helen M. Hall	Catharine Keim		
Dr. & Mrs. David Capuzzi	Tom & Rosemary Hampton	Erin and Brian Kent		<i>List as of August 13, 2024</i>
Olympia Colasante	Bob & Louise Harman	Walter Kissel		
Sally & Tom Coulttes	BillyD Hart	Mr. & Mrs. Ted Lotz		
	Bernard Havard & Judy Capuzzi Havard	Debbie & Elliott Maser		
		Patricia and Phil McAloon		
		Dr. Donald McGuigan, D.D.S.		

How to Build Your Own Playbills

Introducing PLAYBILLDER, a way to make authentic, Broadway-quality Playbills at home.

Have you ever wanted to make your own Playbill program for a local production or event? Whether you're building a program for a high school or community theatre show or just making a fun pamphlet for an especially theatrical wedding or birthday party, PLAYBILLDER makes creating authentic Broadway-quality Playbill programs easy and fast. Wondering how it all works? Follow the steps below!



Step 1: Create an account at PLAYBILLDER.com

To register, we just need your name, email address, and a few other details.

Step 2: Create a production

Enter the name of your production or event and the venue where it will be held. If performance dates and times aren't solidified yet, don't worry; you can fill in or change those fields later.

Step 3: Fill out the program

After accepting our terms and conditions, you'll be given the option to create a Save the Date or a Virtual Playbill. The Virtual Playbill can live online as a digital program, but it is also how you create a printable program.

When you click "Create a Virtual Playbill," you'll be taken to the Program Creation Tool, which includes every section in the Playbill, including "Cover" (the front of the Playbill), "Billing" (the program title's page), "Who's Who" (who is working on the production), "Ads" (where you can include your custom ads), and "Photos" (that's self explanatory). You can reorder these sections as you desire.

Don't have any use for a particular section? Skip it! Any section that's not fully approved by you will be absent from the online and printed

version of your Playbill program. The only section you have to use is the Cover—you're making a Broadway-quality Playbill program, after all.

Step 4: Print

There are two ways to print your custom Playbill program. The easiest is to use our professional print service. Click the yellow "Print Custom Playbills" button and place an order. You'll receive your programs, professionally printed and bound, at your front door. You can also have 14x22 posters printed of your program's cover.

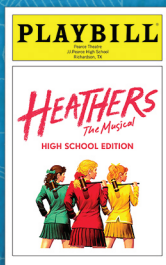
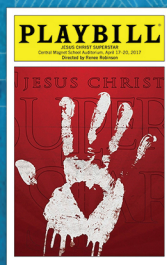
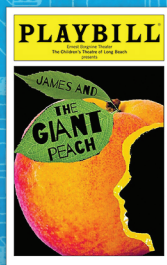
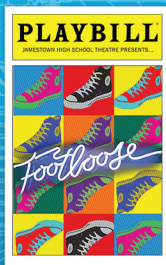
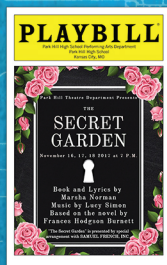
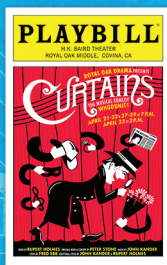
If you'd like to print your program on your own or using a local printing service, click "Enable PDF." For a one-time \$75 license fee, you get unlimited downloads of a printable PDF version of your program. No additional payment is required if you generate new PDFs after making edits.

Ready to get started? Visit PLAYBILLDER.com!

Need More Help? PLAYBILLDER support staff is always standing by to help. Call our live help desk, staffed weekdays 10 AM to 6 PM ET, at 212-557-5757 (ext 167), or email support@playbillder.com.

PLAYBILLder

Create your own PLAYBILL® today!



PLAYBILLder.com

PLAYBILLder® EXPRESS POWERED BY

MUSIC THEATRE INTERNATIONAL • CONCORD THEATRICALS
R&H THEATRICALS • SAMUEL FRENCH • TAMS-WITMARK
THE ANDREW LLOYD WEBBER COLLECTION
THEATRICAL RIGHTS WORLDWIDE • DRAMATISTS PLAY SERVICES

inspiring
A LIFE OF BEAUTY



Wood-Mode designers bring your vision to life through creativity and years of product and technical training. For more than 75 years, Wood-Mode has been developing products and training that inspire our designers, so they can inspire you.

Wood-Mode[®]
FINE CUSTOM CABINETRY

Visit Wood-Mode.com to get inspired, explore and learn more.

Wall & Walsh, Inc.
(610) 789-8530
wood-mode.com

8320 West Chester Pike
Upper Darby, PA 19082