

PLAYBILL®



WALNUT STREET THEATRE
PHILADELPHIA, PENNSYLVANIA

MILLION DOLLAR QUARTET





Today, the storm will feel
the torrential power of you.



LX 700h

A car that doesn't make you feel something is a car that stops short of amazing. **That's the Standard of Amazing.**

Experience Amazing

Contents

OCTOBER 2025

WELCOME 4

THE PROGRAM 6
Including Cast, Who's Who and Credits



PLAYBILL®

President & CEO: Philip S. Birsh
Chief Financial Officer: Shamindra Jagnanan
Chief Operating Officer & SVP: Alex Birsh
Director of Manufacturing: Robert Cusanelli
Executive Assistant to CEO and COO: Dalconerys Reyes

Editor in Chief: Diep Tran
Production Managers: Alex Near
Jenna Perrino
Prepress Manager: Seán Kenny
Prepress Specialist: Benjamin Hyacinthe
Associate Editor: Stephen Vratto
Art Director: Kesler Thibert
Creative Services Manager: Dean Greer
Managing News Editor: Logan Culwell-Block
Senior News Editor: Andrew Gans
New York Broadway Editors: Scott Hale
Khadijah Rentas
Managing Program Editor: Matt Bonanno
Program Editors: Amy Asch
David Porrello
Silvia Figueroa

Publisher: Jolie Schaffzin
Vice President of Sales: Joshua Stone
Senior Revenue Officer: Glenn Shaevitz
Head of Theatrical Sales: Nicholas Foster
National Sales Director: Clara Barragán
National Sales Director: Grace Simpson
Advertising Sales Associate: Katie Clooney-Gainey
Advertising Sales Associate: Franchesca Reese
Sales Operations Manager: Joe Weinberg
Sales & Marketing Specialist: Chris Kateff
Ticket Manager: Yadira Mitchell

Chief Technology Officer: Jon Goldman
Director of Digital Operations: Andrew Ku
Creative Producer: Bryan Campione
Director of Events &
Branded Content: Leonard Rodino
Digital Media Manager: Jennifer Marinelli
Director of Social Media: Jeffrey Vizcaino

Chairman: Philip S. Birsh
Editor in Chief Emeritus: Joan Alleman
Secretary/Treasurer: Shamindra Jagnanan

PHILADELPHIA ADVERTISING SALES
Michael Gagliardi
215-840-7628 | mgagliardi@playbill.com

Advertising Sales
729 Seventh Avenue, 4th Floor
New York, New York 10019
(212) 557-5757

PLAYBILL® is published by PLAYBILL Incorporated, 729 Seventh Avenue, 4th Floor, New York, NY 10019. Copyright 2025 by PLAYBILL Incorporated. All Rights Reserved. PLAYBILL® is a Registered Trademark of PLAYBILL Incorporated.

inspiring A LIFE OF BEAUTY



Wood-Mode designers bring your vision to life through creativity and years of product and technical training. For more than 75 years, Wood-Mode has been developing products and training that inspire our designers, so they can inspire you.

Wood-Mode®
FINE CUSTOM CABINETRY

Visit Wood-Mode.com to get inspired, explore and learn more.

Wall & Walsh, Inc.
(610) 789-8530
wood-mode.com

8320 West Chester Pike
Upper Darby, PA 19082



FOUNDED 1808

AMERICA'S OLDEST THEATRE – PHILADELPHIA'S MOST POPULAR THEATRE COMPANY

WALNUT STREET THEATRE

825 WALNUT STREET • PHILADELPHIA, PA 19107

Dear Theatregoer,

Welcome back to the Walnut for the spectacular **MILLION DOLLAR QUARTET**. Our talented artists have poured endless energy and care into bringing this story to the stage. We hope this performance captivates and inspires you to return for the entire season.

As the holiday season approaches, the stage will come alive with the warmth and charm of **A CHRISTMAS STORY The Musical**—a nostalgic journey the entire family is sure to enjoy. Follow young Ralphie Parker in his quest for the perfect Christmas gift as he navigates obstacles like a cranky department store Santa and mischievous dogs stealing turkey. Based on the classic movie, this musical captures the timeless magic of the holidays.

Winter turns to mystery and adventure with the world premiere of **SHERLOCK HOLMES: THE GREAT DETECTIVE**. Filled with suspense, intrigue, and the legendary brilliance of Holmes and Watson, this new theatrical journey awaits fans of classic storytelling and clever crime-solving.

This spring, I'm excited to bring you **Edward Albee's A DELICATE BALANCE**, a masterwork of American drama that explores the boundaries of comfort, trust, and the unspoken tensions that reside within us all. Closing our season with spirit and song is the bold and stirring **1776 The Musical**. Our gift to you and Philadelphia is the gripping retelling of America's fight for independence through powerful music and riveting history.

In addition to our unforgettable Mainstage Season, we are delighted to open our doors for the Theatre School at Walnut Street Theatre, welcoming students of all ages to explore their passion for performance in our fall semester classes.

We are also thrilled to continue our Walnut Street Theatre for Kids Series, bringing back a cherished holiday tradition with **Charles Dickens' A CHRISTMAS CAROL**, and soaring into spring with the rousing, high-energy musical **Disney's NEWSIES JR.**

But for now, sit back and enjoy the music, energy, and unforgettable story behind **MILLION DOLLAR QUARTET**—the legendary night that brought Elvis Presley, Jerry Lee Lewis, Carl Perkins and Johnny Cash together for one incredible jam session. We're so glad you're here to kick off our season, and we look forward to welcoming you back again!

Sincerely,

Bernard Havard,
President and Producing Artistic Director



Photo: Mark Garvin

MOMIX

Alice

DEC ★ 12-14

A vivid journey
through Wonderland

PENN
LIVE
ARTS

PENNLIVEARTS.ORG



Always Best Care
senior services®

Personal Care & Skilled Home Health



Our team of caring and
compassionate individuals
delivers the best service available...
always.

For more information
call anytime 24/7

(267) 909-9248 or visit
www.TeamGreeneABC.com

For the people.

DESTINATION
Gettysburg!
ADAMS COUNTY, PA

Discover the dramatic, inspiring
Gettysburg experience for yourself.

DestinationGettysburg.com



FOUNDED 1808

AMERICA'S OLDEST THEATRE – PHILADELPHIA'S MOST POPULAR THEATRE COMPANY

WALNUT STREET THEATRE

825 WALNUT STREET • PHILADELPHIA, PA 19107

BERNARD HAVARD

President and Producing Artistic Director

September 30 – November 2, 2025

MILLION DOLLAR QUARTET

Book by

COLIN ESCOTT and FLOYD MUTRUX

Original Concept and Direction by

FLOYD MUTRUX

Inspired by

ELVIS PRESLEY, JOHNNY CASH, JERRY LEE LEWIS and CARL PERKINS

Originally developed and produced by Relevant Theatricals, John Cossette Productions and Northern Lights, Inc. at the Goodman Theatre, Robert Falls, Artistic Director – Roche Shulfer, Executive Director and transferred to The Apollo Theatre, Chicago, IL, 2008 Produced by the Village Theatre, Issaquah, Washington, Robb Hunt, Producer – Steve Tompkins, Artistic Director, 2007 and Seaside Music Theater, Daytona Beach, FL, Tippin Davidson, Producer – Lester Malizia, Artistic Director, 2006

Set Design

ROMAN TATAROWICZ

Costume Design

MARY FOLINO

Lighting Design

RYAN O'GARA

Sound Design

SEAN MCGINLEY

Wig and Makeup Design

AMARI CALLAWAY

Director of
Production

SIOBHÁN RUANE

Stage Managers

**ELIZABETH HAROIAN
MICHELE BEGLEY**

Associate
Artistic Director

BRIAN KURTAS

Directed by

FRAN PRISCO

MARK D. SYLVESTER

Managing Director

General
Manager

JESSICA DOHENY

Director of
Development

JEFF COON

Director of
Education

T.J. SOKSO

Director of Marketing
and Public Relations

STEPHEN RAPP



Quality Education Changes Lives

Every child deserves access to quality, safe schools.



Donate and support scholarships!



A BREATH *of* FRESH AIR



At Dunwoody Village, nature is more than a backdrop — it's a way of life. Contact us today to find out more.



A Continuing Care Retirement Community

(610) 359-4400

www.dunwoody.org

3500 West Chester Pike
Newtown Square, PA 19073

Independent Living • Rehabilitation
Personal Care • Skilled Nursing
Memory Support • Home Care

★★★★★
Five-Star Rated Healthcare

Pet Friendly



Your Brand
Hand Delivered
to Your
Target Audience!

**Contact us today
to reserve space in
PLAYBILL.**

Your Sales Representative:

Michael Gagliardi
mgagliardi@playbill.com
215.840.7628

PLAYBILL®

CAST

(in alphabetical order)

Johnny Cash KEN SANDBERG*
Dyanne KATHRYN BRUNNER*
Fluke JON ROSSI*
Jerry Lee Lewis BRIAN MICHAEL HENRY*
Carl Perkins PAUL HARROLD*
Jay Perkins STEVE HARDING*
Sam Phillips FRAN PRISCO*
Elvis Presley MATTEO SCAMMELL*

UNDERSTUDIES

ALICIA BROGAN (Dyanne), BRIAN SCOTT CAMPBELL (Sam Phillips),
VINCENT FEDERICI (Jay Perkins), GIACOMO FIZZANO (Elvis Presley/Jerry Lee Lewis),
W.D. FORDY (Johnny Cash), JIMMY JESBERGER (Fluke), KOHL PILGRIM (Carl Perkins)

ASSOCIATE DIRECTOR

JON ROSSI

*The Actors and Stage Managers employed in this production are members of Actors' Equity Association, the theatre union of Professional Actors and Stage Managers in the United States.

The videotaping or other video or audio recording of this production is strictly prohibited.

Artwork by BWJ Enterprises LLC.

MILLION DOLLAR QUARTET The Musical

is presented through special arrangement with
and all authorized performance materials are supplied by
Theatrical Rights Worldwide
1180 Avenue of the Americas, Suite 640,
New York, NY 10036.
www.theatricalrights.com

Q U I N T E S S E N C E T H E A T R E

GILBERT AND
SULLIVAN'S

THE PIRATES OF PENZANCE

NOV 19 2025 - JAN 4 2026

DIRECTED BY
ALEX BURNS

"A MOST
INGENIOUS
PARADOX!"

JOIN THE
ROMCOM
ADVENTURE
OF A LIFETIME
THIS HOLIDAY
AT QUINTESSENCE!

QTCREP.ORG

215 987 4450



QUINTESSENCE at THE SEDGWICK 7137 GERMANTOWN AVE PHILADELPHIA PA 19119

The Ultimate Playbill® Binder

PLAYBILL Binders and Sleeves
display, organize, and protect your
precious theatre keepsakes for
years. The perfect gift for theatre
fans everywhere!



PLAYBILL®STORE.com

MUSICAL NUMBERS

“Blue Suede Shoes”	Carl, Johnny, Jerry Lee, Elvis
“Wild One”	Jerry Lee
“Matchbox”	Carl
“Who Do You Love”	Carl
“Folsom Prison Blues”	Johnny
“Fever”	Dyanne
“Memories Are Made of This”	Elvis, Carl, Jerry Lee, Johnny
“That’s Alright Mama”	Elvis
“Brown-Eyed Handsome Man”	Jerry Lee, Carl
“Down By the Riverside”	Johnny, Jerry Lee, Elvis, Carl
“Sixteen Tons”	Johnny
“My Babe”	Carl, Johnny
“Long Tall Sally”	Elvis
“Peace in the Valley”	Dyanne, Jerry Lee, Carl, Elvis, Johnny
“I Walk the Line”	Johnny
“I Hear You Knockin’”	Dyanne
“Let’s Have a Party”	Carl, Elvis, Jerry Lee, Johnny, Dyanne
“Great Balls of Fire”	Jerry Lee
“Down By the Riverside” – Reprise	Johnny, Jerry Lee, Elvis, Carl
“Hound Dog”	Elvis
“Ghost Riders in the Sky”	Johnny, Dyanne, Carl, Elvis
“See You Later Alligator”	Carl, Ensemble
“Whole Lotta Shakin’”	Jerry Lee, Carl, Johnny, Elvis

MILLION DOLLAR QUARTET
IS PERFORMED WITHOUT AN INTERMISSION.



Caribbean Cruise

February 15–21, 2026

From Ft. Lauderdale, FL

Onboard *Celebrity Silhouette*®

Join Sirius XM radio host and Broadway pianist/conductor/author **Seth Rudetsky** ("Musical Theatre For Dummies") on **Seth Rudetsky's Broadway Cruise to the Caribbean!** Guests aboard the *Celebrity Silhouette*® will start their adventure embarking from **Fort Lauderdale**, Florida and experience the beauty and majesty of **Key West**, followed by port calls in **George Town**, **Grand Cayman** and **Cozumel, Mexico** before returning to Fort Lauderdale to disembark.

Starring

*Talent subject to change



Lillias White
Hadestown



Arielle Jacobs
Here Lies Love



Anika Larsen
Beautiful: The Carole King Musical



Priscilla Lopez
A Chorus Line



Your Celebrity Silhouette® cruise with Seth includes Cruise Fare, as well as exclusive entertainment including*:

- **Broadway Concerts** With The Stars
- Special **Entertainment** and **Daily Activities** Curated By Seth
- Audience Seating for **Seth's Big Fat Broadway Radio Show**
- Onboard Meals and Classic Beverage Service
- Fun **Broadway Trivia** and Broadway **Game Shows** with Fabulous Prizes
- **Autograph Sessions** with the Stars
- Optional Family-Friendly **Workshops** and **Masterclasses**
- Dining at Private Group Dinners
- The Opportunity to **Perform with the Stars**
- And More!

*Exclusive programming and events are subject to change and are not limited to the above items. Talent subject to change.

Pricing as low as \$310 per day
(Per person based on double occupancy)

• **More Broadway talent to be announced •**

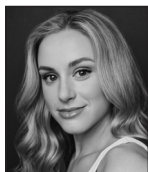


For more information visit **PLAYBILLTRAVEL.COM**

To Reserve Your Cabin or Suite call
PLAYBILL TRAVEL at 866.455.6789



CAST



Kathryn Brunner



Steve Harding



Paul Harrold



Brian Michael Henry



Fran Prisco



Jon Rossi



Ken Sandberg



Matteo Scammell

WHO'S WHO

KATHRYN BRUNNER (*Dyanne*) is thrilled to be back! Recent WST credits include Jovie in *Elf The Broadway Musical*; Ella in Rodgers + Hammerstein's *Cinderella*; and Elle Woods in *Legally Blonde: The Musical*. Credits: Ella in Rodgers + Hammerstein's *Cinderella* (Sacramento Music); Elle in *Legally Blonde: The Musical* (LaMirada Theatre, The Ordway Center, Riverside Theatre); Sophie in *Mamma Mia* (Pioneer Theatre, Arrow Rock Lyceum); Mary Phagan in *Parade* (Arden Theatre Company); and Val in *A Chorus Line* (Pennsylvania Shakespeare Festival). Big thanks to Bernard, Brian, Mark, and Fran. Love to BP, Mom, and Matt. As always, for Dad.

STEVE HARDING (*Jay Perkins*) WST Debut! Theatre credits include *The Zoo Story*, Kushner's *The Illusion*; and the title role in *Richard III*. Seen on screen in *DELCO: The Movie*. BA from Temple, MFA from FAU. Love to family, friends, Jamie and Iris.

PAUL HARROLD (*Carl Perkins*) is delighted to make his Walnut mainstage debut, playing one of his rock'n'roll idols. Locally he has appeared with Lantern Theatre Company, Theatre Horizon, Delaware Shakespeare, Curio Theatre Company, Quintessence Theatre Group, and more. His band the *Nuclear Bandits* can be found streaming everywhere. Thanks to my parents, James, John. Besos to Tina.

BRIAN MICHAEL HENRY (*Jerry Lee Lewis*) a PA native, is thrilled to be making his Walnut

Street Theatre debut in *Million Dollar Quartet*. Recent credits: Strauss's *Guntram* (Carnegie Hall); *Beautiful – The Carole King Musical*; *Jersey Boys*; *The Baker's Wife*; and *The Sound of Music*. A *Million Dollar Quartet* veteran, Brian has appeared in productions at Ogunquit Playhouse, Bucks County Playhouse, Beef & Boards Dinner Theatre, Norwegian Cruise Line, and many more. His albums of original music are available wherever you can stream music. Love to Mom, Dad, and Nate!

FRAN PRISCO (*Sam Phillips*) #43! Most recent WST productions: *Elf The Broadway Musical* (Walter Hobbs); *Jersey Boys* (Gyp DeCarlo); *Beautiful – The Carol King Musical* (Donny Kirshner); Disney's *Beauty and the Beast* (Cogsworth); Rodger's + Hammerstein's *Cinderella* (Sebastian); and *Rocky, the Musical* (Paulie). Forever grateful to the Walnut Family. Up next: The Old Man in *A Christmas Story The Musical* and Livingston in *1776 The Musical*!

JON ROSSI (*Fluke/Associate Director*) is a drummer, Music Director, Music Supervisor, writer, director, and actor. National Tours: *Million Dollar Quartet* (for eight years); *A Night With Janis Joplin*; *Smokey Joe's Cafe*; *A Charlie Brown Christmas*; and *Under the Sun*. Jon also tours regularly with his band "The Shakedown Shuffle." When not on stage, Jon is the host and producer of *The Rossifari Podcast*, dedicated to sharing the stories of accredited zoos and aquariums and the people and animals found at them. If you've seen a

WHO'S WHO

video of someone playing drums with an elephant, that was Jon! Say hi @rossifari

KEN SANDBERG (*Johnny Cash*) is delighted to be returning to Walnut Street Theatre! Previously seen in *Jersey Boys* and *Elvis: A Musical Revolution*. Other recent credits include *Million Dollar Quartet* (The Greta Theatre); *King James* (North Carolina Stage Company); *Macbeth* (Quintessence Theatre); and *The Legend of Georgia McBride* (South Camden Theatre). Ken is a proud member of AEA. "Thank you to the Pantera/Murphy Agency. And to Heather Michele Lawler, who makes every day a little better, I love you." @ken.sandberg

MATTEO SCAMMELL (*Elvis Presley*) is a Barrymore Award-winning actor, musician, and theater maker based in Philadelphia. He is a company member of Obie Award-winning experimental theater company New Paradise Laboratories, and The Wilma Theater's acting ensemble, HotHouse. Regionally, Matteo has performed in over 45 theatrical productions including Jimmy Buffett's *Escape to Margaritaville* and *Other Desert Cities* here at the Walnut! Recent credits include: *RENT* (Arden Theatre Company); *RIFT* (InterAct Theatre Company) and *NOSEJOB* (Lightning Rod Special). Love to Lee and the family! BFA – University of the Arts. 2020 Independence Fellow.

COLIN ESCOTT (*Book*) Born in England, Colin Escott lives near Nashville, Tennessee. He is the author of *Good Rockin' Tonight: Sun Records and the Birth of Rock 'n' Roll*, the first in-depth account of the Sun Records story. His book *Hank Williams – The Biography* has been adapted into the movie *I Saw the Light*, starring Tom Hiddleston and Elizabeth Olsen. His multi-CD box set, *The Complete Hank Williams*, won a Grammy, and another of his productions, *B.B. King – King of the Blues*, was nominated for a Grammy. *Million Dollar Quartet* received three Tony nominations, including Best Book and Best Musical. Escott was part of the writing/producing team adapting the show for CMT/Viacom. The first season aired in 2016.

FLOYD MUTRUX (*Book*) Floyd Mutrux apprenticed at the Alley Theatre in Houston and worked at Second City in Chicago; he attended Columbia University. He has conceived, written, directed, or produced 50 films, including *Dusty and Sweets McGee*; *Freebie and the Bean*; *Aloha, Bobby and Rose*; *The Hollywood Knights*; *American Hot Wax*; *Dick Tracy*; *American Me*; *Blood In, Blood Out*; *There Goes My Baby*; and *Mulholland Falls*. With his wife Birgitte, he is preparing a new film, *Moon Over Memphis* (a rock-and-roll *Field of Dreams*). He also co-wrote the musical *Baby It's You!* with

Colin Escott and helped adapt *Sun Records*, the new television series based on *Million Dollar Quartet*. *Million Dollar Quartet* received three Tony Award nominations in 2010, including Best Book and Best Musical.

FRAN PRISCO (*Director*) Mainstage directing debut! The last time I was crazy enough to direct and act in a show was here in Studio 3's sold out production of *My Way! A Musical Tribute to Frank Sinatra*, my WST directing debut! I then directed *Dino!* and the riveting play *A Steady Rain* for Studio 3. Most recent: *Forever Plaid* and *The 25th Annual Putnam County Spelling Bee* for the Fulton Theatre in Lancaster, PA. Much Gratitude to Bernard Havard and the WST Family for trusting me with this grand opportunity! A very special thank you to Director of Production Siobhán Ruane! She has assembled a top-notch crew that has made this process a joy! Thank you for believing in me all these years!

ROMAN TATAROWICZ (*Set Design*) Walnut Street Theatre: *Hay Fever*; *Driving Miss Daisy*; *Beautiful – The Carole King Musical*; Edward Albee's *Who's Afraid of Virginia Woolf?*; *Elvis: A Musical Revolution*; *Cat on a Hot Tin Roof*; *Rocky: The Musical*; *Blithe Spirit*; *The Best Man*; *A Woman of No Importance*; *The Curious Incident of the Dog in the Night-Time*; *The Humans*. Selected Off-Broadway: *The Banana Monologues* (Acorn Theatre); *Honky* (Urban Stages); *Dames at Sea*; *The Threepenny Opera* (Jean Cocteau Repertory). Many Off-Off-Broadway productions including: *Bee-Luther-Hatchee*. Regional credits: Capital Repertory Theatre, Merrimack Repertory Theatre, Florida Studio Theatre, Azuka Theatre, Act II Playhouse, InterAct Theatre Company, Bristol Riverside Theatre, People's Light, Pennsylvania Shakespeare Festival, Delaware Theatre Company, and ETC (Santa Barbara). tatarowicz.com

MARY FOLINO (*Costume Design*) is celebrating her 50th Costume Design for WST with this production of *Million Dollar Quartet*. Mary is currently Arcadia University's Costume Shop Manager and Resident Costume Designer, having previously worked as WST's Costume Shop Manager, and as the Costume Director of the Milwaukee Repertory Theater. Many thanks to Bernard and the WST family, all of my collaborators, and the amazing costume and wardrobe team!

RYAN O'GARA (*Lighting Design*) Broadway: *The WIZ*; *Thoughts of a Colored Man*. Select-Cirque du Soleil, Norwegian Cruise Line, Tokyo DisneySea, NYC Opera, Paper Mill Playhouse, Walnut Street Theatre, Drury Lane Theatre, Theatre Under the Stars, Baltimore Center Stage,

WHO'S WHO

Syracuse Stage, Signature DC, Lincoln Center Festival, Capital Repertory Theatre and Bristol Riverside Theatre. Associate Lighting Designer for 29 Broadway productions. www.ryanogara.com

SEAN MCGINLEY (*Sound Design*) is excited to be making his Walnut Street Theatre debut! Regional credits: Mac-Haydn Theatre, Gulfshore Playhouse, Gable Stage, Playhouse on Park, The Naples Players, Theatrezone, Public Theatre. Off-Broadway: *In My Own Little Corner*; *Alan Turing and the Queen of the Night*. @seansounds101 seanmcginleysounddesign.com

AMARI CALLAWAY (*Wig and Makeup Designer*) is a freelance wig and costume designer from Las Vegas, NV. They moved to Philadelphia in 2017 for the wig and wardrobe apprenticeship at Walnut Street Theatre and have been working in the area ever since. You may have seen Amari's wig designs on the Walnut stage in *The Winter Wonderettes*; *Sherlock Holmes: The Adventure of the Speckled Band*; *Driving Miss Daisy*; and Noël Coward's *Hay Fever*.

ELIZABETH HAROIAN (*Stage Manager*) Thrilled to be back with Walnut Street Theatre for a fifth season! You'll see her work on *Million Dollar Quartet*; *Sherlock Holmes: The Great Detective*; and Edward Albee's *A Delicate Balance*. Select stage management credits include *Jersey Boys*; *Elvis: A Musical Revolution*; *Cat on a Hot Tin Roof* (Walnut Street Theatre); Disney's *Beauty and the Beast*; *Rocky: The Musical*; *Hair*; *West Side Story*; *Waitress*; *42nd Street* (Broadway at Music Circus); *The Secret Garden*; *Sister Act* (NYU Steinhardt); and *Richard III* (Juilliard). She also managed a show in Saudi Arabia with five international illusionists and has worked with NYU Tisch, The Juilliard School, Atlantic Acting School, and ART/ Harvard. Amid all the chaos, she reminds everyone to have fun!

MICHELE BEGLEY (*Assistant Stage Manager*) is excited to be returning to Walnut Street Theatre for her third professional season! She started here as a Stage Management Apprentice for the Mainstage under Lori Aghazarian and Angela Cucco Jenkins in the 2017–2018 season. Some favorite Walnut productions include Disney's *Beauty and the Beast*; *Beautiful – The Carole King Musical*; *Jersey Boys*; *Elf The Broadway Musical*; and *Dreamgirls*. Other regional credits include Bristol Riverside Theatre, Theater at Monmouth, Penobscot Theatre Company, First Stage, and The Barnstormers Theatre. Special thanks to the cast,

crew, apprentices, production, and creative staff. Proud member of AEA. Enjoy the show!

SIOBHÁN RUANE (*Director of Production*) This is Siobhán's 13th season at WST. With over 25 years in the business, Siobhán has worked internationally as a Production Manager and Stage Manager. Previously, Siobhán held the faculty position of Stage Management Advisor at Florida State University's School of Theatre. Additional credits include Cirque du Soleil, Norwegian Cruise Line, Cirque Productions, and various regional theatres. Siobhán holds an undergraduate degree from Rutgers University, an MFA from the University of Delaware, and is (proudly!) originally from the Jersey Shore.

BRIAN KURTAS, CSA (*Associate Artistic Director*) has been associated with WST since 2007. He began his career here as a performer and in the apprenticeship program and has since dedicated himself to bringing artists together. He now serves our audiences in the various capacities of casting, directing, programming, and literary management, as his function is to bring the finest artists to our historic stage. His vision behind unforgettable live experiences and storytelling has become a creative solution from the stage to the screen - he spent 4 seasons as the Executive Producer of Gretna Theatre, cast for commercials and films, and helped create events for brands such as T-Mobile and Walmart while at Live Nation. Originally from Lancaster, Brian is a proud Temple alum, a published playwright, and a member of the Casting Society of America.

MARK D. SYLVESTER (*Managing Director*) Mark is proud to be celebrating over three decades at America's Oldest Theatre. His extensive career has spanned Summer Stock to Broadway as an actor, stage manager, box office treasurer, theatre manager, marketing and public relations director and general manager. After several years working with commercial theatre, he has devoted his career to non-profit theatre companies since 1987. To date, Mark has been associated with more than 500 stage productions. An avid collector of musical theatre recordings, his collection contains over 3,500 cast albums from around the world. He has served on several boards including the National Alliance for Musical Theatre where he now holds the honorary position of Board Emeritus and the Advisory Committee of Samuel French, the international play publisher and licensing company. With Bernard Havard he co-authored the book *Walnut Street Theatre*.

WHO'S WHO

BERNARD HAVARD (*President and Executive Producing/Artistic Director*) Vox Populi (The Voice of the People) was written on WST Playbills in the 1800s. Whenever WST has strayed from a populist program, the theatre has gone bankrupt. When I came here 43 years ago, we had no programs and no audience. Today we enjoy one of the largest subscription bases of any theatre in the world. So, my thanks to our loyal audience and a warm welcome to newcomers who enjoy and believe in what we do. I admire the artists who dedicated their lives to the theatre and WST,

particularly. Our theatre is a non-profit 501-C3 institution, and we rely on contributed income to extend our reach into the community. Last season we reached more than 62,743 students in our city schools. We have 19 esteemed trustees who give their time, wisdom, and contributions to help guide this historical treasure. I came to WST in 1982, and I am as excited now about our future as I was in the beginning. My heartfelt thanks to all who enter this theatre. For my biography, go to About Us on our website at WalnutStreetTheatre.org

MUSIC CREDITS

Blue Suede Shoes Music and lyrics by Carl L. Perkins © MPL Music Publishing Inc. All rights reserved. Used by permission of Wren Music Co. o/b/o Carl Perkins Music Inc.

Real Wild Child Music and lyrics by John O'Keefe, John Greenan, and Dave Owens © MPL Music Publishing Inc. All rights reserved. Used by permission of Wren Music Co.

Matchbox Music and lyrics by Carl L. Perkins © MPL Music Publishing Inc. All rights reserved. Used by permission of Wren Music Co. o/b/o Carl Perkins Music Inc.

Who Do You Love? Music and lyrics by Ellas McDaniel © ARC Music Corp. All rights reserved. Used by permission.

Folsom Prison Blues Music and lyrics by John R. Cash Published by House of Cash, Inc. Administered by Bug Music Inc. All rights reserved. Used by permission.

Fever Music and lyrics by Eddie Cooley and Johnny Davenport © Carlin America Music/Windswept Pacific Music Publishing. Published by Fort Knox Music, Inc. All rights reserved. Used by permission.

Memories Are Made of This Music and lyrics by Terry Gilkyson, Richard Dehr, and Frank Miller © EMI Blackwood Music, Inc. (BMI). All rights reserved. Used by permission.

That's All Right Music and lyrics by Arthur Crudup © 1947 (renewed). Unichappell Music Inc. (BMI) and Crudup Music (BMI). All rights administered by Unichappell Music Inc. All rights reserved. Used by permission.

Brown Eyed Handsome Man Music and lyrics by Chuck Berry © ARC Music Corp. All rights reserved. Used by permission.

Down by the Riverside Traditional; arranged by Chuck Mead © Zoilink Music. All rights administered by Coburn Music. All rights reserved. Used by permission.

Sixteen Tons Music and lyrics by Merle Travis © Merle's Girls Music. All rights reserved. Used by permission.

My Babe Music and lyrics by Willie Dixon © Bug Music, Inc. o/b/o Hoochie Coochie Music (BMI). All rights reserved. Used by permission.

Long Tall Sally Music and lyrics by Robert Blackwell, Enotris Johnson, and Richard Penniman © Sony/ATV

Music Publishing LLC. All rights reserved. Used by permission.

Peace in the Valley Music and lyrics by Thomas A. Dorsey © (Renewed) 1939 Warner-Tamerlane Publishing Corp (BMI). All rights reserved. Used by permission.

I Walk the Line Music and lyrics by John R. Cash. Published by House of Cash, Inc. Administered by Bug Music Inc. All rights reserved. Used by permission.

I Hear You Knocking Music and lyrics by Dave Bartholomew and Pearl King © EMI Unart Catalog Inc. All rights reserved. Used by permission.

Party Music and lyrics by Jessie Mae Robinson © MPL Music Publishing Inc. All rights reserved. Used by permission.

Great Balls of Fire Music and lyrics by Otis Blackwell and Jack Hammer © 1957 (renewed) Unichappell Music Inc. (BMI), Mijac Music (BMI), Chappell & Co., Inc. (ASCAP), and Mystical Light Music (ASCAP). All rights reserved on behalf of itself and Mijac Music, administered by Unichappell Music Inc. All rights reserved on behalf of itself and Mystical Light Music, administered by Chappell & Co., Inc. Used by permission.

Hound Dog Music and lyrics by Jerry Leiber and Mike Stoller © 1953 Sony/ATV Music Publishing LLC. Published by Sony/ATV Songs LLC. All rights administered by Sony/ATV Music Publishing LLC, 8 Music Square West, Nashville, TN 37203. All rights reserved. Used by permission.

Ghost Riders Music and lyrics by Stan Jones © MPL Music Publishing Inc. All rights reserved. Used by permission of Edwin H. Morris & Company.

See You Later Alligator Music and lyrics by Robert Guidry © Arc Music Corp. All rights reserved. Used by permission.

Whole Lotta Shakin' Goin' On Music and lyrics by Curly Williams © 1997 N'Mani Entertainment Co. (ASCAP). All rights reserved. Used by permission.

WALNUT STREET THEATRE
825 WALNUT STREET, 215-574-3550

BOARD OF TRUSTEES

President	Bernard Havard
Chair	Francis J. Mirabello, Esq.
Immediate Past Chair	Scott Rankin
Chairman Emeritus	Louis W. Fryman, Esq.
Chairman Emeritus	Matthew Garfield
Chairman Emeritus	John D. Graham
Vice Chair/Secretary	Patrick Mullen
Treasurer	Robert L.B. Harman
Jeffrey Ferro	Daniel J. Schuller
Jack R. Garfinkle, Esq.	James D. Scully, Jr.
Melita J. Jordan	Ellen Tobie
Richard A. Mitchell, Esq.	Joseph Villani
Jennifer Merves Robbins	David Wyher
Tanya Ruley-Mayo	

ALUMNI TRUSTEES

Ashok N. Bakhru, Bruce Belzak, George M. Chamberlain Jr., Thomas J. Coultres, Louis J. D'Ambrosio, Joseph E. Ellis Sr., Barry Genkin, Terry Graboyes, Ramona Gwynn, Denise Daher Hodgson - Chairwoman Emerita, Jeremy D. Johnson, Kenneth E. Kirby, Theresa E. Loscalzo (Esq.), Craig R. MacQueen, Kyle Anne Midkiff, Ann Marie Richter, Renee H. Rollin, Keith D. Schneek, Martin W. Spector, James M. Tholey

HONORARY MEMBERS

Ms. Carole Haas Gravagno, Ms. Susan Sherman, Hon. Mark Squilla, Ms. Lily Tomlin

WALNUT STREET THEATRE STAFF

ARTISTIC

President and Producing Artistic Director.....Bernard Havard
 Associate Artistic Director

ADMINISTRATION

Managing Director

General Manager.....

Director of Finance

Finance Associate.....

Management Assistant.....

Audience Services Manager.....

Associate Audience Services Managers..

Refreshment Service Manager

Facilities Manager

Assistant to the Facilities Manager

Facility Services.....

Lamont Godley, Camielle Johnson, Hermone Johnson, Demetria Foster, Ashura Merriweather

DEVELOPMENT

Director of Development.....

Assistant Director of Development.....

Development Associate.....

Development Apprentice.....

EDUCATION

Director of Education

Associate Director of Education

Education Programs Manager

Education Apprentice.....

Acting Apprentices

Teaching Artists... Dave Allison, Julianna Babb, Julianna Barton, Hallie Berger, Val Berger, Andy Boettcher, Andrea Cardoni, Hannah Catanoso, Jake Collins, Elliot Davis, Walter Dodd, Sharon Geller, Skylar Jeffries, Holly Kelly Farella, Finn Irvin, Annette Kaplafka, Brian Kurtas, Jenna Kuerzi, Lindsay Marcus, Lindsey McCue, Taylor J. Mitchell, Brooklyn Morehead, Dana Orange, Domenica Passio, David Pica, Nicole Renna, Steven Rishard, Alicia Roper, Leah Senseney, Connor Shields, Devon Sinclair, Arielle Sosland, Grant Uhle, Alice Yorke

MARKETING

Director of Marketing and Public Relations

Communications Manager

Marketing Associate

Group Sales and Ticketing Services Associate

Marketing Apprentice

Box Office Treasurer

Assistant Box Office Treasurer

Ticketing Services Manager.....

Associate Ticketing Services Manager.....

Ticketing Services Associate

Ticketing Services Apprentice

Ticketing Services Agents.....

Sabina Jafri, Logan Keeler, Maryann Kuzan, Christopher LeVere, Kallias Medrano, Carrie Quarles, Tiffany Ruiz, Will Street, Courtney Taylor, Kate Wallach

Outbound Sales and Telefunding

Ann Marie Borget, Lauren Townsend

PRODUCTION

Director of Production.....

Assistant Production Manager

Production Technical Supervisor

Production Administrator

Production Management Apprentice

Stage Manager

Assistant Stage Manager

Stage Management Apprentice

Technical Director

Assistant Technical Director

Technical Production Associate

TD/Shop Management Apprentice.....

Head Carpenter

Carpenters

Carpentry Apprentices

Scenic Charge

Scenic Artists

Scenic Apprentices

Properties Manager

Prop Rental Coordinator.....

Properties Artisan

Properties Apprentices.....

Costume Shop Manager.....

Assistant Costume Shop Manager.....

Rentals Manager

Draper and Costume Associate

Costume Apprentices.....

Lead Dresser

Wig and Make-Up Coordinator

Wig and Wardrobe Apprentice

Stage Crew

Head Carpenter

Head Electrician

Head Flyman

Head Sound.....

Head Props

Seasonal Assistant Sound.....

Seasonal Assistant Lighting

Stage Crew Apprentice.....



Actors' Equity Association ("Equity"), founded in 1913, is the U.S. labor union that represents more than 51,000 professional Actors and Stage Managers. Equity fosters the art of live theatre as an essential component of society and advances the careers of its members by negotiating wages, improving working conditions and providing a wide range of benefits, including health and pension plans. Actors' Equity is a member of the AFL-CIO and is affiliated with FIA, an international organization of performing arts unions. #EquityWorks



The Director is a member of the **STAGE DIRECTORS AND CHOREOGRAPHERS SOCIETY**, a national theatrical labor union.



UNITED SCENIC ARTISTS REPRESENTS DESIGNERS FOR THE AMERICAN THEATRE



BACKSTAGE EMPLOYEES AND SCENE SHOP EMPLOYEES ARE REPRESENTED BY THE INTERNATIONAL ALLIANCE OF THEATRICAL STAGE EMPLOYEES. (I.A.T.S.E.)



The mission of the Walnut Street Theatre Company is to sustain the tradition of professional theatre and contribute to its future viability and vitality. It does so through the production and presentation of professional theatre; the encouragement, training, and development of artists; the development of diverse audiences; and the preservation and chronicling of its theatre building, a National Historic Landmark..



Independence
STARTS HERE!

Walnut Street Theatre is a member of the Greater Philadelphia Cultural Alliance, Citizens for the Arts in Pennsylvania, and the league of Historic American Theatres. Walnut Street Theatre receives state arts funding support through a grant from the Pennsylvania Council on the Arts, a state agency funded by the Commonwealth of Pennsylvania.



Accessibility Equipment, Training and Marketing provided by Independence Starts Here, the statewide cultural accessibility program of VSA PA/Amaryllys Theatre Co., jointly led in different regions in PA by cultural partners in that region. In Greater Philadelphia, Independence Starts Here is jointly led by Art-Reach, Inc..



ART-REACH

Walnut Street Theatre receives additional season operating support from Actors Equity Foundation, Independence Foundation, and Theatre Forward.



Walnut Street Theatre honors American service and celebrates history with a community performance of *1776 The Musical* graciously funded by PNC Arts Alive.

COMING ATTRACTIONS AT THIS THEATRE!

MAINSTAGE

Our 2025–26 Season includes

- *A CHRISTMAS STORY The Musical*
- *SHERLOCK HOLMES: THE GREAT DETECTIVE*
- *Edward Albee's A DELICATE BALANCE*
- *1776 The Musical*

Buy a subscription or individual tickets
at **215-574-3550**,

WalnutStreetTheatre.org

or Ticketmaster.com

800-982-2787

WST FOR KIDS

Charles Dickens' A CHRISTMAS CAROL
Disney's NEWSIES JR.

WALNUT STREET THEATRE SCHOOL

Contact us about Fall Classes
and Camp Walnut.
Call 215-574-3550
or register online at
walnutstreettheatre.org

THANK YOU TO OUR GENEROUS SUPPORTERS!

Walnut Street Theatre wishes to express gratitude to the following individuals, corporations, foundations, and government agencies for their generous contributions in support of America's Oldest Theatre.

FORREST SOCIETY (\$25,000+)

Bells Grocery Store
The Estate of Mr. Ronald Campbell
John Ciccone Playhouse Charities Inc.
Friends of Education
Hamilton Family Charitable Trust
Bob & Louise Harman
Hearst Foundations

The Hellendall Foundation
Syde Hurdus Foundation
Mr. & Mrs. Francis J. Mirabello
Pat & Jacki Mullen
The Neag Foundation
PA Department of Community &
Economic Development

PA Department of Education
PECO
PNC Arts Alive
Scott & Sharon Rankin
Scully Company
Joe & Kim Villani

BOOTH SOCIETY (\$10,000+)

Always Best Care Senior Services
C&N Bank
Donna & Ron Chmar
Deering Family Foundation
Disney Worldwide Services
Dunwoody Village
Elliot's Vending Company, Inc.
Essential Utilities, Inc.
Jeff & Janie Ferro
Ferreira Law
Fulton Bank
Matt Garfield

Harmelin Media
Bernard Havard &
Judy Capuzzi Havard
Herman Goldner Company
Independence Blue Cross
Johnson Kendall & Johnson Inc.
Gary A. Jonas & Katie Keller
The Sylvia W. & Randle M. Kauders
Foundation
KPK Development Co, LP
Legacy Advisors/Foundation
Josh & Brenda Mellor

Richard A. Mitchell & Marna Carlton
Penn Community Bank
Pennsylvania Council on the Arts
Pennsylvania Lumbermens Mutual
Insurance Company
Rush Order Tees
Brian & Jennifer Merves Robbins
Sanjenis Family Foundation
Mark D. Sylvester
USLI
Stephen Voudouris
David Wyher

BARRYMORE SOCIETY (\$5,000+)

Abington Neurological
Associates
Dan & Reeva Benau
Lee Brooks
Drs. James Byers &
Stephanie Chuipek
Noël Coward Foundation
Sam Driban & Marilyn Shadis
Frances Emmons-Anastasi
& Christopher Emmons

Ruth Fausak
Dennis & Jennie Franklin
The Haley Foundation
HP Law
Jane James
Justamere Foundation
William M King
Charitable Foundation
Joseph & Peter Lomax
Dr. Sandra Mather

Jerry & Mary Miller Fund
Mr. & Mrs. Edward J. Mitchell
Maureen E. Molloy
Drs. Jonni & Roger Moore
Kathryn Novak
The Payne Family
Foundation
The Ethel Sergeant Clark
Smith Memorial Fund
William R. Snell, Esq.

Stein/Gelberg
Foundation, Inc.
Universal Health Services
Cheryl Uzzo
Bruce & Donna White

CUSHMAN SOCIETY (\$2,500+)

Susan Adamczyk
Paul M. & Mary Lee Anderson
Anonymous (4)
Baker Tilly US, LLP
Jean Berg
Joseph & Barbara Bernert
Bernert Family Fund
Harris T. Bock, Esq.
Joseph & Suzanne Calabro
Campus Apartments
Bob & Cheryl Carfagno
Eileen Chambers
Sandy & Joanne D'Orazio

Mr. & Mrs. Timothy Duffy
Dr. Bruce Eisenstein
Laura & Anthony Fiorenza
Giunero Floro &
George Abreu
Rhoda & Louis Fryman
Katherine M Glaser
Patrick & Shelly Guise
Gary Harter
Jerry & Kate Hathaway
Brandon Havard
The Haverford Trust
Company

Kathryn S. Hayes &
Victor J. Tortorelli
Robert & Maureen Heckler
Gail L. Heinemeyer
Charles W. Horn, III &
Patrick M. Rumaker
Mr. Lee H. Hudson
Becky & Eric Hunt
Huntington Bank
INTECH Construction
Lacy Ketzner &
Jayson Tischler
Walter Kissel

Art Kissel
Brian Kurtas &
Jason Ketelsen
Ms. Abbie Lampe
Jane A. Lane
Ms. Vanessa Mapson
Paul J. Marcotte &
Karen A. Brown
Roberta A. Martin
Philip & Margaret Masters
Jack Miller Family Foundation
Paul & Sarah Mirabello

CUSHMAN SOCIETY, CONTINUED

National Trust Insurance
Services, LLC.
Thomas P. Obade, MD
Cozen O'Connor
Deborah Ott &
Angel Macasieb
Parx Casino
Ann & Lanny Patten

Robert & Terry Patterson
Rev. Lucy Pierre
Mr. Rocco Pugliese
Wayne & Karen Ranbom
Bruce & Cindy Rangnow
Carl M. & Diane Schoenborn
Gene Schriver
Rowland & Elaine Smith

Jesse W. Stuart
Mr. & Mrs. Richard T. Taylor
Marlene & Joe Testa
Ticketmaster
Dr. & Mrs. Alan & Edye Twer
United Way of the Greater
Lehigh Valley

The Variable Annuity Life
Insurance Company
Stephanie Ward &
Paul Merollo
Victoria Werth & Kevin
Jon Williams
Ruth Anne & David Woolsey
WSFS CARES Foundation

JEFFERSON SOCIETY (\$1,500+)

The A Cappella Project
Philadelphia
Joey Abramowicz & Jeff Coon
Anonymous (2)
Dr. Sucha & Mr. Michael Asbell
Bank of America
Dan Bosin Associates
Dolores & Ronald Bowlan
Nancy Brodie
Alice L. Brown
Royal Bunin
William & Joann Butler
CBIZ Benefits & Insurance
Services
Edward Charlton &
Grace Spampinato
Mary Dauphinais &
Thomas Kenney
Vic & Eva Dawson
Bill & Susan Degler
Dolfinger-McMahon Foundation

Dennis Dunlap
William Faris
Michelle Franklin
Jane & David Galli
Susan M. Garber
Jack & Ellie Garfinkle
Larry & Nancy George
James & Wendy Gerber
Dr. Priya Gor &
Dr. Darius Sholevar
Ron & Sandy Gould
Mr. & Mrs. John D. Graham
Laurie White Gumula
Joe & Otti Hallinan
Bill & Cindy Hart
Lynda & David Herendeen
James Herman, Esq. &
Brenda Lee Eutsler, Esq.
Denise D. Hodgson
Tom & Paula Hollencamp
Clara Huntzinger

Richard & Gail Johnson
Ginny & Gordon Lapinski
Stephen & Beverly Levin
Jeanette & Richard Merion
Joseph E. Miller, Jr. Family
Steven & Deborah Mongiardo
Sandy & Todd Murray
Mario & Rosemarie Nicolais
Nochumson P.C.
Philis & Robert Notley
Overlook Property Group
Pasholli Family
Barbara Ponczek
Mr. Jack & Hermene Potts
Mr. & Mrs. Vincent Redes &
Morgan
Bruce & Susan Rosenbaum
Mr. & Mrs. Robert K. Roush, Jr.
Tanya Ruley-Mayo
Alison & Mark Saddlemire
Nahid Safavi

Joyce S. Sando
Keith Schneck
Ellen Schwartz & Jeremy Siegel
Jennifer Seligsohn
Kathy & Don Shannon
Rita A. Silvestri
The Honorable Mark Squilla
Dave & Chris Stanton
Dom Stellato
Sherry & Ted Strand
Mr. & Mrs. Donald C. Tantum
Jim & Irene Tholey
Lori & Robert Scott Uhl
Frank & Fran Urso
Peter & Vivianna Van Deerlin
Rachel & Brian Wilner
WipFlI LLP
Debbie & Ron Wolf

KEMBLE SOCIETY (\$1,000+)

Anonymous (3)
Matthew & Megan Abbott
Mr. & Mrs. Raymond &
Mary Alimenti
Mary R. Barry
Mr. & Mrs. Emma Beckers
Andrea & Andrew Bowers
Carrie Boyle
John & Linda Braceland
Tracy A. Broomall
Paul, Kaye, & Scott Bunkin
Jeffrey & Diane Bush
Calabrese Charitable Fund –
Christopher & Cathleen
Calabrese
Mayor & Mrs. Edward Campbell
Donna Carmody
Joey Caroto Scholarship Fund
Edward & Dorothy Carter
Natalie Caruso
David Centafont
George M. Chamberlain
Joann Colman

Rodney & Meghan Comegys
Sara & Chris Console
Bob Courey & Tom Keebler
Tom & Sue Crop
Kimberly & Walter Cwietniewicz
Dr. Michael B. Dabrow &
Dr. Manette Fine
Delta Community Supports, Inc.
Jessica & Mike Doheny
Rick & Tammy Echevarria
Jeff & Lyn Evans
Chris & Margie Giles
The William Goldman
Foundation
Marguerite & Christopher
Hamilton
Mr. & Mrs. John Hammer
Ms. Linda Harvey
Robert Hess & Frances Sherr
Bruce & Alice Hudson
Jim & Carol Hunsicker
Kathy & Dave Hychalk
Jo Hyden

Dr. & Mrs. Gerard Johnson
Marcia & Ned Kaplan
Paul Keenan
Mr. & Mrs. David Kelly
Ava Kilian
Holly Krause & Family
Christine & Oscar Laskin
Francis Licopoli
David & Theresa Long
Eric & Jane Luce
Mr. & Mrs. Marchioli
Michael & Sam Markovitz
Margo & Jonathan Marmon
Andrew & Cheryl Masterman
Sandy McGee
Patrick & Paula McGinley
William & Louise Merriken
Jim & Mary Ann Miles
Patrick & Monica Moeller
Carolyn Montgomery
Ruth & Jerry Mooney
Karen & Mike Morgan
Sean Morrissey

Kenneth Morton
Christian & Noelle Noyes
Mr. & Mrs. Stuart Ockman
Hayler, Robbie & Meighan
Osborn
Mr. Joseph Ostaszewski
Robert Overell & Lisa Glasser
Marcia & Don Pizer
Juanita & Pete Ricchiuti
Kevin A. Roach
Carl & Donna Robinson
Drs. Brad & Elizabeth Robinson
Robinson Family Foundation
Deborah Rodia
Anna Rodriguez
Sally & Edwin Rosenthal
Victoria & Don Rosini
John & Lauren Sacks,
Property Management
Redefined
Louie Scottoline
Michael & Patricia Scully
Deborah Sesok-Pizzini

KEMBLE SOCIETY, CONTINUED

Nancy Stein Simpson & Family	Lynne Spencer	Dr. Roman & Mrs. Lynne	Richard Volpe
Joel & Paula Slomsky	Dr. & Mrs. Frank Stearns	Tatarowicz	Mr. & Mrs. Michael B. Walsh
Candace Sneberger	Carrie & Glenn Stockmal	Mr. & Mrs. Sylvan Taub	Virginia Wentzel
Jon & Jean Snyder	Jason & Lisa Strand	Ellen Tobie & Larry Gilberti	Jan Wright
Joe & Sharon Somers			

PRODUCING ANGELS (\$500+)

Anonymous (2)	Vikram Dewan	Andrew Hudson	Gordon Manin &	Dr. Christopher &
Jerry Abelson & June Idzal	Susan DiPaolo	Charles & Elaine Intenzo	Margot Waltz	Mrs. Sara Rapuano
Edward & Roseann Adamczyk	Dr. Charles & Mrs. Brenda Driben	Ginny & Frank Jackson	Wayne Marquardt &	Leonard M. Rosenfeld PhD
Ande & Jim Adelman	Dorothy & Pat Egan	Debra Jih & Noah Cook	Chris Tadeo	Blair & Tammy Rush
Charles Allen	Beverly Emanuel	Robert Wood Johnson Foundation	Debbie & Elliott Maser	Mary & Paul Rutter
Duane & Meena Amendola	Mary Beth Enslin &	Matching Gifts	Mr. & Mrs. Carl Mason	Stephen M. Sader
Rena & Sam Barnett	Tony Singer	Mr. & Mrs. James Johnson	James & Patricia Mayhew	Lucinda Schwebel
Bruce C. Belzak	Jeffrey Ettinger & Ann White	Jim Kaplan	Steve & Cindy Mazda	Gail Scoufield
Colleen Bennett	Bill & Angela Evans	Catharine Keim	Pat & Phil McAloon	Ann Seiberlich
Barbara & Brian Binney	Nancy Farrington	John & Barbara Kelly	Pat & Harold McIlwain	Robin Sherwood
The Scott Bishop Family	Joel & Carol Fleisher	Mr. & Mrs. W.A. Kline	Ellyn McMullen	John Steigerwald
Tom & Amy Bohner	Brandon & Jaclyn Ford	Mary Kozar	Dr. Dorothy McMullen	Miss Marilyn L. Steinbright
Mr. & Mrs. Henry Brasteter, Jr.	The Fox Foundation	John Krol	Joseph & Trina McSorley	Mr. & Mrs. David Stitely
Thomas & Carol Brightman	Dan Fannon	Charles Landreth	Paul & Karen McTamney	Sarah G. & Marc D. Tischler
Donna Britt	Robert & Jamie Gazda	Kirk Larsen	Mr. Brian & Dina Monsen	Michael P. Toner
Jim & Mary Brown	Stephen Glaudel	JoAnne Lawrence	Rick Moog & Pat Martin	Mrs. Fran Trender
Carol E. Brown	Joan & Larry Glazerman	Joe & Andrea Leahy	Hermann & Barbara Moser	Todd & Pam Tuckey
Brenda Bundy	Gail & Samuel Goldstein	John & Daniela Leone	Emma Nashner	Cathy & Frazier Van Velsor
Mr. & Mrs. Christopher Burks	Terry Graboyes	Debra Levinson	Newman Family	Vanguard Group
Mr. & Mrs. Bransby Bushey	Drs. Marcia & Alexander Grande, III	Greg & Ashley Liddle	Charitable Fund	Joseph & Sandra Vasta
Frank C. Buttarro, III	Douglas & Epiphany	Ruthie Lieberman	Harvey & Lisa Ostroff	Mr. & Mrs. Mickey Velez
Vincent Caruso	Lance Curley	Spadea Lignana, LLC	Mrs. Joan Palitz	Pam & Walter Vogler
Maureen Casey	Helen M. Hall	Rafael & Carol Lissack	L. Stephan &	Lew & Hella Volgenau
Susan Casey	BillyD Hart	Mr. Jonathan Loeb &	Matthew Pettigrew &	Jeff Walsh &
Ashley Centafont	Rev. William D. Hartman	Dr. Catherine Loh	Mary Martello	dMark Klingensmith
George Chmielewski	Suzanne T. Heller	Richard & Kathleen Lowry	Marc & Deena Platzky	Barbara Wasserman
Comcast	Jill Herschman	Joseph L. Maloney & Family	Nancy & Jon Pliskin	Sarah Weidenauer
Mr. & Mrs. G. Sterling Coyne II	Bill & Clare Higgins	Samuel P. Mandell	Patricia H. Polinsky	Thomas Wholey
Michael Criscuolo	Jeanne Horn	Foundation	Stephen Rapp	David & Karen Winning
Natalie & Evan Cutler				Karen Zur & Robert Biron

BENEFACTORS (\$250+)

M. Faith Angell &	Chubb Corporate Giving	Kathy Galtère	Elton Johnson & Wendy-Anne	Ms. Marjorie Miller
Kenneth Carobus	Hope A. Comisky &	Linda Dubin Garfield	Roberts-Johnson	Kathy & Lou Monticchio
Stephen & Domenick Angilletta	Jeffrey L. Braff	Mark Garvin	Lynn Johnson	Lawrence & Susan Morgan
Anonymous (3)	Jeremi Conaway	Maryanne Giampapa	Homi & Shireen Kapadia	Dr. & Mrs. Richard &
Luana Aul	Joseph Cristella	Barry & Cindy Gould	Natalie Kaye - On Demand	Bonnie Moses
Judith Ballow	Lance Curley	Drs. William & Harriet	Programs	Sylvia T. Nisenbaum, Esq.
Dr. & Mrs. Kenneth &	The Curry Family	Greenberg	Mr. & Mrs. John W. Kemble Jr.	Mr. Walter Norris
Susan Basalik	Helen M. Cyzio	Eleanor & Stephan Grikob	Mr. & Jennifer Knudson	Jeremy & Sandy Oliver
Ellen Berlinger	Sophie & Robert D'Agostino	Linda Gussie	Rene & Philip Krey	Alan Jay Ominsky, MD
Dr. & Mrs. Evan Berson	Kristin Daly	Nicole Begue Hackmann	Susana Lambour	& Judge Marlene F.
Andrew Bertolazzi	Louis D'Amico	Dr. Kenneth Hallahan	Mary Landherr	Lachman
Janet, Dan & Jacob Boris	Pat & Chet Dawson	Tom & Rosemary Hampton	Andy & Julie Leader-Smith	Andy & Jana Opperman
Lisa Boyell	Deborah A. Delp	Stacey Hickmott	Lisa Leatherman	Mr. & Mrs. Thomas &
Gail Boyllan	Jim DiCarlo	Kevin Hoekzema	Bob & Joyce Leonetti	Elizabeth Pack
Kirsti Bracali	Gail W. Dillon	George & Bernadette	Rev. Elizabeth Lerch	Frank & Anne Palopoli
Mark Branson &	Kevin & Barbara Dillon	Hoffmann	Todd Levin & Andre Beckett	Dianne Papadinec
Jacqueline Meckwood	Richard Dougherty	Mr. & Mrs. John R. Hogan	Kathy Lieberman	Michele Parsons
Bob & Treva Burger	Reva Dubin	Larry & Jean Holbert	Mr. & Mrs. James Love	Dr. & Mrs. Bernard &
Marilyn R. Burgin	Robert J. Eberle Jr.	Robert Horrigan	Alan & Kathleen Mackie	Joy Pekala
Gerard & Nancy Callan	David & Marlene Fackler	Donald Hosler	Gary Mamrol	Mr. & Mrs. Steven B. Pinsky
Kimberly Callan	Sean & Amy Fahey	Robert & Nan Huber	Judith Martin	Susan Pitcher
Bob Canavan	Patricia Farraday	Brenda Hunsberger	Rita A. McBride	Mr. Frank Pittner
Maria Cappello	Bruce Fine	Kip & Debbie Iacovone Lord	Margaret & Ken McGill	Kim & Doug Pratt
Jennifer Caputo	The Fox Foundation	Ade & Olutayo Ibikunle	Rev. & Mrs. Raymond &	Ms. Anne Marie Price
Joann & Ralph Carey	Kristin & Gary Friedman	Dr. & Mrs. Geza Incze	Deborah Merriweather	Lori & David Rapuano
Mrs. Nancy L. Cervino	Dan Gable	Mr. & Mrs. David &	Liz & Allen Meyer	Linda L. Reedy
	Arthur J. Gallagher Foundation	Anne Marie Inglis	Mr. & Mrs. Antonino Micela	Cathy Riker

BENEFACTORS, CONTINUED

Adam Rogers	Ira Siegal	Tompkins Financial	Llew & Ginny Werley	Marian M. Wolfert
Hannah Aliyah Rossio	Patrick & Donna Smith	Corporation	Wayne & Paula Davis West	Joseph & Maureen Yanoshik
Molly Dee Rounsley	Bonnie & Steven Snyder	Warren Uzialko	Mark Wheeler	Mary E. Zaccardi
Martin & Rosalyn Rudoff	John & Christine Sommer	Sarah & John VanBuren	Mr. & Mrs. Howard White	Alice Zal
Corrente Shankler	JoEllen & Stan Stockmal	Mary Ellen Walder	Tacey White	Sandra Zarodnansky
Cynthia W. Seelig	Leslie & Kevin Sullivan	Melissa Wanczyk	Bobbi Wilson	Robert Zimet
David & Joanne Shafter	Anthony J. Tokarchyk	William & Jennifer Ware	Kathryn Withrow	
Kristin & Nora Shute		Michelle Weinstock	David & Kathleen Wojcik	

PLATINUM STAR VOLUNTEERS

Recognizing our wonderful volunteers who have made contributions to Walnut Street Theatre, in addition to giving generously of their time!

Cathanne Bart	Jim & Susan DiCarlo	Jean & Larry Holbert	Donna Long	Sharon & Michael Richman
Carol E. Brown	Maryanne Giampapa & Sven	Brenda Hunsberger	Pat & Phil McAloon	Jerry Silverman
Randi Chud & Bob Frey	Blossom Gica	Isaak & Evonne Kruger	Barbara Ponczek	Judith & Stan Woloff

Contributions made to Walnut Street Theatre through July 1, 2025.

Additional supporters are gratefully acknowledged online at walnutstreettheatre.org/support/ways-to-give. Every effort has been made to ensure this is a complete list; if your name is listed incorrectly, please contact the Development Office at 215-574-3580.

POP REED LEGACY SOCIETY

The Pop Reed Legacy Society recognizes individuals who have made provisions for Walnut Street Theatre through a planned gift.

Because of their commitment to keeping our flame eternal, we know that our legacy will burn bright for future generations of audiences, artists, and students alike.

Anastasius & Anastasia Bandy*	Jeremy Edgecliffe-Johnson	Bernard Havard & Judy Capuzzi Havard	Miranda Markart	Mark D. Sylvester
Bruce Belzak	Harold Farrey*	Ken & Nancy Helledall	Joan Prewitt*	Thomas C. Wiernicki*
John J Burns*	Rhoda & Louis Fryman	George L. James III	Kevin A. Roach & Jane* K. Emely-Roach	*Deceased
Joseph & Suzanne Calabro	Bruce & Terri Goldberg	Don & Diane Kolodziejski	Dr. Harry Rosenthal	List as of July 1, 2025
George Chamberlain	John & Liz Gontarz	Carol Lange	Rebekah Sassi	
Philip Drach*	Sylvia Green*	Lloyd Lewis*	Martin Spector	
	Gary Grob*			

CAPITAL CAMPAIGN: THE FUTURE LIVES HERE EXPANSION PROJECT

In acknowledgement of contributions made to The Future Lives Here Expansion Project, Walnut Street Theatre is humbled to thank the following donors of \$250+.

Anonymous (4)	Charles J. Denny	The Otto Haas	Stephen E. Lore	Dolly Beechman Schnall
Arthur Murray International, Inc.	Sean & Amy Fahey	Charitable Trust	Philip & Marjorie Masters	Keith Schneck
Dave & Bill Bailey	Dr. & Mrs. William G. Field	Guy Hackney	Michael & Deborah McKee	Camryn J. Schultheis
David S Blum & Mark B Woodland	The Fox Foundation,	Gillian Herschman	David & Lyn Montgomery	Kathy & Don Shannon
George Boehm	In Memory of Rex & Carol Fox	Alicia & John Hlywak	Maria & Steve Needles	Dick & Maria Shroy
Mr. & Mrs. Warren Brandies	Matt Garfield	Mr. & Mrs. John R. Hogan	Lynn & Cherie Oakes	Adam & Christine Sigal
Drs. Lee & Ellen Brooks	Dr. & Mrs. Robert J. Geller	Tom & Paula Hollencamp	Pennsylvania Lumbermens Mutual Insurance Company	Jon C. & Karen P. Sirlin
Dr. & Mrs. David Capuzzi	Gail & Samuel Goldstein	In Memory of Jane Lydon Kappel	PNC Bank	Charles & Clarice Thum
Natalie Caruso	Mackenzi & Joshua Gross	Kent Family	Scott & Sharon Rankin	Robert & Cheryl Traub
Dr. Todd & Wendi Cohen	Patrick & Shelly Guise	Alan & Henrietta Kiel	Earl & Felicia Rehmann	Timothy & Leora Wile
	Ramona Gwynn	Carol & John Little		Richard Woosnam

2024-2025 RENOVATION DONORS

In acknowledgement of contributions made to the 2024-2025 renovations, Walnut Street Theatre is humbled to thank the following donors of \$250+.

Anonymous (2)	Gary & Marlene Dworkin	Bernard Havard & Judy Capuzzi Havard	Patricia and Phil McAloon	Mr. Kevin A. Roach & Jane K. Emely-Roach
George J. Ahern	Beverly Emanuel	Denise D. Hodgson	Dr. Donald McGuigan, D.D.S.	Jim and Marlene Scully
The Arcadia Foundation	Jeff Evans	Tom & Paula Hollencamp	Arthur P. & Marjorie L. Miller	Louis and Bessie Stein
Mr. & Mrs. John Ash	Jeffrey & Jane J. Ferro	Bruce & Alice Hudson	John W. Mills	Foundation Fund #2
Robert Basile & Marie Mooney	Rosalie Folts	Mr. and Mr. Huphoeflewicz	Mr. & Mrs. Francis J. Mirabello	Meryl Udell & Kelci
Melissa & Andrew Baumbach	In Memory of Ben Lipitz	Syde Hurdus Foundation	Richard A. Mitchell	Todd & Barbara Vanett
Amy and Tom Bohner	Rhoda & Louis Fryman	Kathy & Dave Hychalk	Steven & Deborah Mongiardo	Mr. & Mrs. Mickey Velez
Dolores & Ronald Bowlan	Matt Garfield	Linda Iacono	Drs. Jonni & Roger Moore	Marge & Rick Volpe
Drs. James Byers & Stephanie Chuipek	Jack & Ellie Garfinkle	Johnson and Johnson	Margaret M. Morgan	Ms. Maryann Ziembra
Dr. & Mrs. David Capuzzi	Janis Goodman	Catharine Keim	Daniel W. & Chieeng K. Pitchford	
Olympia Colasante	Ms. Michele M. Gendron	Erin and Brian Kent	Diana L. Racobaldo	List as of August 18, 2025
Sally & Tom Coultres	Helen M. Hall	Walter Kissel		
	Tom & Rosemary Hampton	Mr. & Mrs. Ted Lotz		
	Bob & Louise Harman	Debbie & Elliott Maser		
	BillyD Hart			



YOUR MOBILITY,
OUR MISSION.



Schedule an Appointment Today
RothmanOrtho.com | 833.495.0890